

AGENDA  
KANSAS RACING AND GAMING COMMISSION  
10:00 a.m., Friday, September 13, 2024

EISENHOWER STATE OFFICE BUILDING  
700 SW Harrison, Suite 450 & 460  
Topeka, KS 66603

A. CALL TO ORDER

B. APPROVAL OF AGENDA

C. APPROVAL OF MINUTES

1. [Minutes of August 16, 2024](#)

D. CONSENT AGENDA

*Items listed on the consent agenda are routine in nature. If requested by a commissioner, an item may be removed from the Consent Agenda and placed under Commission Items for further discussion and consideration.*

1. Approvals and revocations for certain lottery facility games and related components
  - a. [GLI Approval Letters September 2024](#)
  - b. [GLI Revocation Letters September 2024](#)
  - c. [BMM Approval Letters September 2024](#)
  - d. [BMM Revocation Letters September 2024](#)
2. Internal Control Amendment Approvals
  - a. [Hollywood Casino Internal Control Amendment Approvals](#)
  - b. [Kansas Star Casino Internal Control Amendment Approvals](#)

E. LOTTERY GAMING FACILITY REPORTS/ITEMS

1. Boot Hill Casino and Resort
  - a. [August Monthly Report](#)
  - b. [August Revenue Report](#)
2. Kansas Star Casino
  - a. [August Monthly Report](#)
  - b. [August Revenue Report](#)
3. Hollywood Casino at Kansas Speedway
  - a. [August Monthly Report](#)
  - b. [August Revenue Report](#)
4. Kansas Crossing Casino
  - a. [August Monthly Report](#)
  - b. [August Revenue Report](#)
5. Golden Circle

F. COMMISSION ITEMS – OLD BUSINESS

None

G. COMMISSION ITEMS – NEW BUSINESS

1. FY 2025 and 2026 Budget

*Commission Action*                      *Commission review and discussion*

*Staff Presentation*                      *Brandi White, Director of Administration, Finance, and  
Audit, KRGC*

*Staff Recommendation*                      *Approval of the proposed Budget*

- a. [Kansas Racing and Gaming Commission FY 2025 and 2026 Budget Memo](#)
- b. [State Gaming Agency FY 2025 and 2026 Budget Memo](#)

H. PUBLIC COMMENTS

I. STAFF REPORTS

1. Garrett Rogers, Paralegal
  - a. [Voluntary Exclusion Program Report](#)
2. Don Brownlee, Executive Director

J. EXECUTIVE SESSIONS

*The Commission conducts executive sessions in accordance with the Kansas Open Meetings Act and all discussions are limited to the specified purposes listed in K.S.A. 75-4319. The Commission utilizes executive sessions to consult with the Commission's attorney on confidential legal matters, to discuss confidential personnel matters, to protect the confidentiality of necessarily closed information including licensee background reports, and to protect the integrity of gaming information and the confidentiality of lottery gaming facility manager finances.*

***The following items will be discussed during the first executive session:***

1. Background Reports

***The following items will be discussed during the second executive session:***

1. Attorney/Client Privilege

K. OTHER BUSINESS/FURTHER COMMISSION ACTION

1. Consideration of proposed gaming licenses and renewals

L. ADJOURNMENT

# KANSAS RACING AND GAMING COMMISSION

## MINUTES – AUGUST 16, 2024

### CALL TO ORDER (A.)

Chairman David Moses called the August 16, 2024, meeting to order at 10:00 a.m. The meeting was held at the Eisenhower State Office Building in Topeka, Kansas. Notice of this meeting was given to the public via the KRGC and Public Square websites and the agency's social media pages. Commissioners Brandon Jones, Larry Turnquist, and Mike Fleming were also present. Others present included Executive Director Don Brownlee, General Counsel Judith Taylor, Director of IT&C-s Dennis Bachman, Director of Security Roger Bailey, Director of Sports Wagering and Licensing DJ Lopez, Government Relations Managers Randy Evans, and other staff.

### MOTION, APPROVE AGENDA (B.)

Commissioner Jones (Fleming) moved to approve the agenda. Motion carried 4-0.

### MOTION, APPROVE July 12, 2024 MEETING MINUTES (C.)

Commissioner Fleming (Turnquist) moved to approve the minutes of the July 12, 2024, meeting. Motion carried 4-0.

### MOTION, APPROVE CONSENT AGENDA (D.)

Commissioner Turnquist (Jones) moved to approve the consent agenda (five items). Motion carried 4-0.

### LOTTERY GAMING FACILITY REPORTS/ITEMS; BOOT HILL CASINO & RESORT (E.1.a.)

Diane Giardine, General Manager, reported:

- July 2024 revenue numbers compared to July 2023:
  - Total gaming revenue decreased 3.52%
  - Total slot revenue was up 0.81%
  - Table games revenue was down 35.86%
  - Table games hold is up so far in August. General Manager Giardine said that the facility is hopeful that numbers will be high because there are five Fridays and Saturdays this August.
- July 2024 Sports Wagering revenue numbers
  - Retail Sportsbook Revenue \$17,317.25
    - Down 20.10% from July 2023
    - Handle was up 152%. July of 2023 was the facility's highest monthly hold at 23%
  - Digital Sportsbook Revenue: \$4,573,914.69
    - Up 42.36% from July 2023
    - Handle was up 62%
  - July Top Events
    - Royals vs White Socks
    - Brewers vs Dodgers
    - Royals vs Rockies
  - July Top Sports
    - MLB was 68% of handle
    - COPA America was 8%
    - Euro 2024 was 4.8% of handle

- 2024 Olympics Sports Wagering
  - Top Handle Events:
    - Men's Basketball United States vs Serbia
    - Men's Basketball United States vs South Sudan
    - Men's Basketball United States vs Puerto Rico
    - Women's Basketball United States vs Japan
    - Women's Basketball United States vs Belgium
  - Top Handle Sports:
    - Men's Basketball
    - Men's Tennis
    - Women's Basketball
    - Women's Soccer
    - Men's Soccer
  - Chairman Moses asked if there were any wagers placed on the American who upset the 800m run. General Manager Giardine stated that she did not have that specific information but could look. Chairman Moses responded that he was just curious. General Manager Giardine noted that she did not believe that there were many track wagers.
- July Headline Promotion:
  - Off Road Adventure Hot Seats – Polaris Ranger and ATV Giveaway
    - General Manager Giardine noted that this promotion was done in combination with Dodge City Days and that visits were down during the event. Official numbers had not yet been received, but General Manager Giardine reported that the concert ticket sales were down from last year. General Manager Giardine also highlighted that it's difficult to get a hotel room in the area during Dodge City Days and that limits facility admissions.
- Upcoming Events and Promotions:
  - Weekly Kiosk Games
  - Weekly Food and Beverage Specials
  - Gift Giveaways
  - Money Machine Giveaways
  - VIP Promotions
  - Slot Tournament
  - Sportsbook Promotions
- Upcoming Entertainment & Events
  - Let the Good Times Rock – August 17
  - Felipe Esparza – August 24
  - Los Tucanes de Tijuana – August 30
  - KC & The Sunshine Band – September 19
  - Roots & Boots – November 8
  - ZZ Top – November 23

LOTTERY GAMING  
FACILITY  
REPORTS/ITEMS;  
KANSAS STAR  
(E.2.a.)

Alli Kuplen, General Manager, reported:

- July 2024 revenue numbers compared to July 2023:
  - Total gross gaming revenue was decreased 3.1%
  - Total slot revenue down 1.8%
  - Table games revenue down 13%
- July 2024 Sports Wagering revenue

- Retail Sportsbook Revenue \$37,000.00.
  - Up compared to July 2023's loss of \$12,000.00.
  - Hold was about 20% compared to -3% last year.
- Digital Sportsbook Revenue: \$3,380,000.00
  - Up from July 2023's revenue of \$2,420,000.00.
- July 2024 Sports Wagering
  - \$35.8 million was wagered on FanDuel online.
    - Chairman Moses asked if the \$35.8 million in online handle was just what was wagered in Kansas. General Manager Kuplen confirmed that was correct. Chairman Moses followed up by asking that the revenue roughly ten percent. General Manager Kuplen agreed that was accurate.
  - The total handle in retail was \$447k for July. This was up almost \$80k over last July.
  - The largest wager in retail was a \$10,000 straight wager on the Baltimore Orioles ML over the Chicago Cubs on July 11. The wager was a loss.
  - MLB was the most popular sport in July by far. MLB had 76% of the handle. It was followed in handle by Soccer, Basketball and MMA.
  - UFC304 did very well on July 27 with a standing room only crowd at KSC.
  - General Manager Kuplen did not have specific figures for the 2024 Olympics but reported that handle was mainly United States Men's Basketball and big names, like Simone Biles. There were also a lot of bets on the gold medal game between the United States and France, with many on France to cover the spread.
    - Chairman Moses asked what the spread was for the competition between the United States and France. General Manager Kuplen answered that it was 16.5, noting that there were many winning wagers placed on France.
- Upcoming Events and Promotions:
  - Double Down | Friday and Saturdays
  - Slot & Table Games Hot Seats | Thursdays in August | 5:30p-10p
  - Face the Music Kiosk Game | Saturday, August 10 | 10am – 11:59pm
  - Host Make a Deal | Saturday, August 17, 24, 31 | 7pm – 8:30pm
  - Hurley "Bogg Style" Bag Gift Giveaway | Friday, August 9 | 4p-9p
  - Neck Fan Gift Giveaway | Friday, August 16 | 4p-9p
  - Weekender Bag Gift Giveaway | Friday, August 23 | 4p-9p
  - Frigidaire Bladeless Portable Fan Giveaway | Friday, August 30 | 4p-9p
- Upcoming Entertainment & Events:
  - Bored Teachers | Arena | August 10
  - Live DJ 90's Theme | Casino Floor | August 10 & August 24
  - Pop Goes the 80's | Arena | September 6

LOTTERY GAMING  
FACILITY  
REPORTS/ITEMS;  
HOLLYWOOD CASINO

Lydia Garvey, General Manager, reported:

- July 2024 admissions were up 1.3% compared to July 2023
- July 2024 revenue numbers compared to July 2023:
  - Total gross gaming revenue increased 1.8%
  - Slot revenue increased 3.4%

AT KANSAS  
SPEEDWAY  
(E.3.a.)

- Coin-in was up 6%, hold was down slightly
- Table games revenue decreased 10.4%
  - Mainly attributed to drop being down and an unfavorable hold comparison.
- July 2024 Sports Wagering revenue numbers
  - Retail Sportsbook Taxable Revenue: \$287,808.00
    - Down 10.4% compared to July 2023
    - Handle was up 31%
    - Hold was at 13% but was 19% last year.
  - Retail Sportsbook: Top Sports
    - MLB was 64% of handle
    - UFC was \$70,000 of handle
      - Attributable to the viewing event hosted by the facility.
    - Olympics were 2% of handle
      - Similar to other properties, wagers were mainly on Men's Basketball.
  - Digital Sportsbook Taxable Revenue: \$253,096.00
    - Down 48.8% compared to July 2023
  - Digital Sportsbook: Top Sports
    - MLB was 54% of handle
    - Wimbledon was 4% of handle
    - WNBA was 3% of handle
- July Recent/Upcoming Events and Promotions:
  - July 20 – Cars and Cigars
  - July 26 – Sportsbook Summer Games
  - August 1 – Kickoff to Football Celebration
  - August 2 - \$200K Progressive Board
  - August 3 – VIP Gift Giveaway
  - August 10 - \$700 Every 7 Minutes
  - August 24 – Break the Bank for \$50K Slotplay
  - August 29 – ESPN Bet Grand Opening Bonus
- Commissioner Fleming asked if General Manager Garvey had any insight on the Missouri sports wagering ballot initiative. General Manager Garvey stated that as of earlier this week, it is possible for the initiative to appear on the ballot, though there is one precinct where signatures are being double-checked. It is uncertain whether the initiative will be placed on the ballot as the initiative is not polling well, and Missouri operators are not confident that it will pass.
  - Chairman Moses noted that he saw an article that the initiative was confirmed to be on the ballot. General Manager Garvey explained that the initiative did meet the requirements to appear on the ballot, but the initiative still may not appear on the ballot if the polling is unfavorable because there will be significant waiting period to attempt another sports wagering ballot initiative.
- Chairman Moses asked what the total handle for the facility's digital sports book was. General Manager Garvey answered that the online handle for July was \$5.7 million.

LOTTERY GAMING  
FACILITY

Jeff McKain, General Manager, reported:

- July 2024 admissions decreased 7% compared to July 2023

REPORTS/ITEMS;  
KANSAS CROSSING  
CASINO  
(E.4.a.)

- July 2024 revenue numbers compared to July 2023:
  - Coin in decreased 2.6%
  - Table games drop decreased 27%
  - Net gaming revenue was down 2.7%
- July 2024 Sports Wagering revenue numbers
  - Retail Sportsbook Taxable Revenue: -\$42,946.00
    - Down compared to July 2023's loss of \$4,995.00.
  - Digital Sportsbook Taxable Revenue: \$1,268,360.00.
    - Up 13.7% compared to July 2023's revenue
    - Top Sports Based on Handle:
      - MLB
      - Tennis
      - Soccer
    - Largest winning wager was on MLB for \$7,200.
    - Largest losing wager was on Women's Wimbledon match for \$10,000.
- Events and Promotions:
  - July
    - Casino Hot Seats every Monday.
    - Casino kiosk games every Tuesday
    - Camp 49 promotions every Wednesday.
    - Mine Shaft promotion every Friday
    - VIP event in the Corral on Saturday the 20<sup>th</sup>.
    - Casino gifts on Sunday.
    - Concerts include Maddie and Tae 13<sup>th</sup>, and Aaron Lewis 27<sup>th</sup>.
  - August
    - Casino Hot Seats every Monday.
    - Camp 49 promotions every Wednesday.
    - Pick-A-Chip table games promotion Fridays.
    - VIP event in the Corral on Saturday the 17<sup>th</sup>.
    - Summer Times Spins promotion on Saturdays.
    - Casino gifts on Sunday.
    - Concerts included Little River Band 16<sup>th</sup> and Tribute to ABBA 23<sup>rd</sup>.

HISTORICAL HORSE  
RACING FACILITY  
LICENSEE  
REPORTS/ITEMS;  
GOLDEN CIRCLE  
(E.5.a.)

Scott Beeler, Golden Circle Representative, reported:

- The project remains on time and on budget.
- Machine base contract negotiations continue.
- The licensing process continues for the announced employees. In addition to those employees, there have been eight or nine Treasure Island IT staff have submitted applications that will cover the temporary work they will do to setup the Golden Circle IT system.

COMMISSION ITEMS –  
OLD BUSINESS; (F.)

There was no old business.

COMMISSION ITEMS –  
NEW BUSINESS (G.)

KRGC Director of Security Roger Bailey and Director of Administration, Audit, and Finance Brandi White presented on the minimum age requirements

for lottery gaming facility employment, noting that current KRGC guidance prohibits anyone under twenty-one from working on the gaming floor, but that statute allows for casino employees between the ages of eighteen and twenty to work on the gaming floor so long as they are not performing any function involved in gaming by the patrons.

Chairman Moses asked if the current rule is in the KRGC regulations. Executive Director Brownlee explained that the age requirement has been a policy decision by KRGC and not put into regulation. Chairman Moses followed-up by asking that this decision would not require a formal regulatory amendment process. Executive Director Brownlee confirmed that was accurate.

Commissioner Jones asked whether KRGC staff are looking for an opinion or for the commission to take a vote and direct staff to take a specific action. Executive Director Brownlee explained that staff is looking for direction on whether the commissioners feel that this proposed policy directive change is one KRGC should make. Executive Director Brownlee further explained that during staff meetings there is an understanding of the facility managers need for a greater labor pool, but there is also concern regarding public opinion.

Commissioner Fleming asked Security Director Bailey to provide an idea on the types of jobs that will be made available to eighteen- to twenty-year-olds if this policy directive change is adopted. Security Director Bailey explained the positions would be surveillance agents, security officers, cage cashiers, anything that is not directly taking wagers from the patrons.

Commissioner Turnquist asked Security Director Bailey if this policy directive change is adopted would that cause any issues with on-site agents needing to monitor casino staff who are under twenty-one years old. Security Director Bailey responded that he does not foresee any issues and that KRGC will likely identify these employees with specific badges.

Each lottery gaming facility manager spoke in favor of allowing casino employees between the ages of eighteen and twenty to work on the casino floor without performing any function involved in gaming by the patrons.

Chairman Moses noted that the college in Wichita has a robust E-Sports program and asked General Manager Kuplen whether the facility is currently unable to hire these individuals for the IT positions at the facility. General Manager Kuplen explained that there are rarely openings on the casino IT team, but that the facility currently hires twenty-one and over. Chairman Moses remarked that making this policy directive change might open opportunities for practical skill students. General Manager Kuplen noted that the facility does partner with Wichita State University, but it is primarily their culinary program.

Chairman Moses discussed how he had initially presumed that there would be a need to break into executive session, however with Executive Director Brownlee's explanation that KRGC staff are seeking guidance from commissioners and not necessarily a ruling or order he does not believe that having an executive session is necessary.



Chairman Moses then asked if there was any discussion from the Commissioners on this issue. Commissioner Turnquist noted that he would be in favor of the policy directive change and that his main concern would be the facility's and KRGc agent's ability to monitor for the first couple of years where the eighteen- to twenty-year-olds are being used. Director of Sports Wagering and Licensing DJ Lopez responded by highlighting Director Bailey's earlier comment of having badge designations would allow KRGc to monitor these employees and the tasks they are doing. Director of IT&C-s Dennis Bachman confirmed that making these changes to the badges is something KRGc is able to do. Commissioner Turnquist followed up by sharing that he anticipates that if the commission approves this policy directive change, KRGc would further define what positions could not filled by those eighteen- to twenty-year-olds. Executive Director Brownlee agreed that it would be KRGc's intent to be on the same page with the casino management as to which positions KRGc would approve for anyone from eighteen- to twenty-year-olds. Commissioner Jones commented that he agreed with Commissioner Turnquist in that he is leaning in favor of the proposal, that KRGc will need to monitor closely to ensure there are no issues, and that it should be subject to review in six, twelve, or eighteen months to see how it's going and revert back if it has become an issue. Commissioner Fleming agreed to the policy directive change and noted that he believes the policy directive change would be in compliance with existing statute. Chairman Moses stated that he firmly believes that KRGc staff has the ability to manage this issue and that employment of eighteen- to twenty-year-olds should be expanded. Chairman Moses stated that he appreciated that KRGc staff wanted to bring this to the commissioners' attention and take their temperature. Chairman Moses stated that he is not sure that commissioners need to micro-manage this issue and is confident that KRGc staff will do what is needed to be done to make sure that it is consistent with state law and provides a safe environment in the facilities. Chairman Moses commented that he believed this narrower interpretation of the statute goes back to the birth of gaming in Kansas and as the gaming industry has grown and matured along with society, it only makes sense to expand the employment opportunities for the eighteen- to twenty-year-olds. Especially as there is an evolution in higher education to focus more on practical skills and not necessarily that people have to go to four-year schools for viable employment. Chairman Moses stated that he appreciated Director White's concerns about the Legislature and that is something the commission will deal with if it comes up. Chairman Moses stated that he thinks the agency needs to discuss and be consistent with their views because he heard a difference of definition or application within the staff. General Counsel Judith Taylor commented that if there is a motion that it should expressly allow eighteen- to twenty-year-olds to be hired for surveillance agents. Chairman Moses responded that given his comments that commissioners should not micro-manage this and that staff can work through the fine tuning decisions of policy directive change.

Executive Director Brownlee commented that he was not sure that a motion would be necessary KRGc has gotten the temperature, so to speak, of the commissioners and staff can take it from here if commissioners agree.

The commissioners were all agreed to move onto the next agenda item.

PUBLIC COMMENTS  
(H.)

There were no public comments.

STAFF REPORTS  
(I.1. and I.2.)

Garrett Rogers, Paralegal, reported on both the Voluntary Exclusion Program and Sports Wagering Exclusion Program statistics for July 2024.

Executive Director Brownlee reported:

- According to the American Gaming Association, the national total gross gaming revenue for the second quarter of 2024 was up by almost 9%, sports betting was up 35%, I-Gaming, which is not allowed in Kansas, grew 25% compared to the second quarter of 2023.
- Kansas gaming revenue was up 11.7%
- Colorado gaming revenue was up 11%
- Nebraska gaming revenue was up 35%. Nebraska has been recently adding casinos.
- Arkansas gaming revenue was up 11.4%
- Oklahoma gaming revenue was down 8.2%. Which is attributed to the Will Rogers Downs Racino closing due to storm damage. Iowa and Missouri also reported negative gaming revenue growth.
- The War Horse casino opened this month in Omaha, Nebraska. It will have 800 slots machines, 19 live table games, and 100 simulcast machines. This facility is adjacent to the Horsemen's Park and casinos in Nebraska are all at racetrack locations, outside of the tribal facilities.
- The Missouri Legislature did not pass sports wagering legislation there is the issue of it being on the November ballot, which was discussed previously.
- There was also an attempt to get a ballot initiative to approve another casino in Missouri, but it failed.
- The casino in Guymon, OK, which will be the closest competitor for Boot Hill Casino, is in an expansion process at the facility that will double the size of the gaming floor and add a hotel. It is anticipated that this project will be finished in the summer of 2025.
  - Commissioner Fleming asked how far Guymon is from Dodge City. Executive Director Brownlee stated that it is about two hours away.
- The October 18<sup>th</sup> Kansas Racing and Gaming Commission meeting is planned to occur at the Kansas Star Casino.
- Each year in September commissioners have to approve the KRGK budget proposal, the window for presentation is narrow, the proposal must be submitted by September 16<sup>th</sup>. The September commission meeting is scheduled for September 13<sup>th</sup>, but Commissioner Jones has a conflict with that date. Chairman Moses confirmed that all other

commissioners will be present, and that Commissioner Jones may be able to attend the meeting via Zoom.

MOTION, EXECUTIVE  
SESSION;  
CONFIDENTIAL  
BACKGROUND  
REPORTS  
(J.1.)

Commissioner Jones (Fleming) moved that the Commission go into executive session for the purpose of reviewing personnel issues presented today by the commission's executive director. In addition to the commissioners, the confidential background reports portion included the executive director, general counsel, director of sports wagering and licensing. The total time for the executive session was anticipated to be twenty (20) minutes until 11:20 a.m. No action is to be taken in executive session, and the subjects discussed are to be limited as previously described. A full record of this motion is to be maintained as part of the permanent record of the Kansas Racing and Gaming Commission. At the conclusion of the executive session, the meeting is to be continued in open session. The motion carried 4-0, and the meeting was adjourned to executive session at 11:00 a.m.

RECONVENE  
(J.2.)

The commission meeting returned to open session at 11:20 a.m. with Chairman Moses, Commissioner Jones, Commissioner Turnquist, and Commissioner Fleming present.

MOTION, EXECUTIVE  
SESSION; ATTORNEY-  
CLIENT PRIVILEGE  
(J.3)

Commissioner Fleming (Turnquist) moved that the Commission go into executive session for the purpose of consulting with the agency's attorney on attorney-client privileged communications. In addition to the commissioners, the attorney-client privileged communications will include the executive director, general counsel. After discussion, the total time for the executive session was anticipated to be forty (40) minutes until 12:00 p.m. No action is to be taken in executive session, and the subjects discussed are to be limited as previously described. A full record of this motion is to be maintained as part of the permanent record of the Kansas Racing and Gaming Commission. At the conclusion of the executive session, the meeting is to be continued in open session. The motion carried 4-0, and the meeting was adjourned to executive session at 11:20 a.m.

RECONVENE  
(J.4.)

The commission meeting returned to open session at 12:00 p.m. with Chairman Moses, Commissioner Jones, Commissioner Turnquist, and Commissioner Fleming present.

MOTION, EXECUTIVE  
SESSION; PERSONNEL  
ISSUES  
(J.5)

Commissioner Jones (Fleming) moved that the Commission go into executive session for the purpose of consulting with the agency's attorney on attorney-client privileged communications. In addition to the commissioners, the personnel issues portion will include the executive director. After discussion, the total time for the executive session was anticipated to be fifteen (15) minutes until 12:15 p.m. No action is to be taken in executive session, and the subjects discussed are to be limited as previously described. A full record of

this motion is to be maintained as part of the permanent record of the Kansas Racing and Gaming Commission. At the conclusion of the executive session, the meeting is to be continued in open session. The motion carried 4-0, and the meeting was adjourned to executive session at 12:00 p.m.

RECONVENE  
(K.2.)

The commission meeting returned to open session at 12:15 p.m. with Chairman Moses, Commissioner Jones, Commissioner Turnquist, and Commissioner Fleming present.

MOTIONS ON LICENSE  
APPLICATIONS  
(L.)

Commissioner Turnquist (Jones) moved to *deny six* license applications, *conditionally approve one* license applications, *deny one* request for reconsideration, and *approve the remaining 178* license applications from the August 16, 2024, list of background reports referred to the commission for action. The motion carried 4-0.

OTHER BUSINESS; (M.)

There were no other items for discussion or motion.

ADJOURNMENT  
(N.)

Chairman Moses stated that the September 13, 2024, commission meeting will begin at 10:00 a.m. for an in-person meeting at the Eisenhower State Office Building in Topeka, Kansas.

SUBMITTED BY:

Commissioner Fleming (Jones) moved to adjourn the meeting. Motion passed 4-0. The meeting was adjourned at 12:17 p.m.

\_\_\_\_\_  
Larry Turnquist  
Secretary

APPROVED BY:

\_\_\_\_\_  
David Moses  
Chairman

	<b>GLI Approved</b>		<b>Friday, September 13, 2024</b>	
<b>Manufacturer</b>	<b>File Number</b>	<b>ID Number</b>	<b>Game Name</b>	<b>Version</b>
Ags, LLC	LO-00-AGY-20-07	Table Game Analysis	Trifecta Stax	
American Wagering Inc 08/12/2024	SY-652-AWH-24-23		PAM	
Aristocrat Technologies, Inc.	MO-73-ARI-24-62	6.16.0-1.00.5	System Base	GEN8/GEN9/GEN10
Aristocrat Technologies, Inc.	MO-73-ARI-24-63	Set Chip	Set Chip 7.02.80.02	7.02.80.02
Aristocrat Technologies, Inc.	MO-73-ARI-24-64	Linux OS	Operating System	X.6C.2
Aristocrat Technologies, Inc.	MO-73-ARI-24-66	GAME-NFLSBJ2-01	NFL Super Bowl Jackpots Vertex Schedule	1
Aristocrat Technologies, Inc.	PA-73-ARI-24-01	433652	PSU 540W 3Y Gold ROHS	433652
Aristocrat Technologies, Inc.	PA-73-ARI-24-01	495001	Gen10 Carrier Board	495001
Aristocrat Technologies, Inc.	PA-73-ARI-24-01	495003	Gen10 Config Stick	495003
Aristocrat Technologies, Inc.	PA-73-ARI-24-01	495005	Gen10 Backplane	495005
Aristocrat Technologies, Inc.	PA-73-ARI-24-01	495127	Power PCBA	495127
Aristocrat Technologies, Inc.	PA-73-ARI-24-01	598811-02	Gen10 FPGA 1.5	1.5
Aristocrat Technologies, Inc.	PA-73-ARI-24-01	598815-04	Gen10 Bios 10.13	10.13
Aristocrat Technologies, Inc.	PA-73-ARI-24-01	435094	COM Express Module	435094
Aristocrat Technologies, Inc.	PA-73-ARI-24-01	439116-1	Nvidia T1000E Graphics Card	439116-1
Aristocrat Technologies, Inc.	SY-08-ARI-24-03	BlackBart	N/A	12.11.6061.53
Aristocrat Technologies, Inc.	SY-08-ARI-24-03	Statistical Net Win.rdl	N/A	2059833101
Aristocrat Technologies, Inc.	SY-08-ARI-24-03	PitBOSS	N/A	12.11.6061.16
Aristocrat Technologies, Inc.	SY-394-ARI-24-06	HA.HALo.Open.Service.exe (Loyalty Integration Gateway)	N/A	1.4.1001.10
DraftKings 08/20/2024	CS-675-DFK-24-03		Risk Assessment	
FanDuel 08/20/2024	SY-559-FAN-24-16		Sportsbook	
FanDuel 08/20/2024	SY-580-FAN-24-16		PAM	
FanDuel 09/02/2024	SY-559-FAN-24-17		Sportsbook	
FanDuel 09/02/2024	SY-580-FAN-24-17		PAM	
IGT	MO-73-IGT-24-64	GAME02000CRDXP01	Red Hot Jackpots Extreme Triple Double Diamond	ASCENT GAME PACKAGE
IGT	MO-73-IGT-24-64	GI02000CRDXP001	Red Hot Jackpots Extreme Triple Double Diamond	ASCENT INSTALL
IGT	MO-73-IGT-24-64	UCGS405A1	Red Hot Jackpots Extreme Sign Controller	N/A
IGT	MO-73-IGT-24-65	BFMD0014	WOF Wheel Driver	N/A
IGT	MO-73-IGT-24-67	GAME02000CRDYP01	Red Hot Jackpots Extreme Gold Bar 7s	ASCENT GAME PACKAGE
IGT	MO-73-IGT-24-67	GI02000CRDYP001	Red Hot Jackpots Extreme Gold Bar 7s	ASCENT INSTALL
IGT Sports Wagering 08/20/2024	SY-582-IGT-24-01		Kiosk	
IGT Sports Wagering 08/20/2024	SY-582-IGT-24-02		Margin Maker	
* Executive Approval				

	GLI Revoked				Friday, September 13, 2024	
Revoked Manufacturer	Revoked Game Name	Revoked File Number	Revoked ID Number	New File Number	New ID Number	Replace By
NRT TECHNOLOGY CORP	JCM Bill Validator Firmware	MO-22-NTC-15-02	2.39-37	MO-22-NTC-24-01	2.92-45	12/12/2024
IGT	Bullfroggin' Keno	MO-73-IGT-20-25	GAME020001BULD02	GAME020001BULD05	MO-22-IGT-23-03	10/22/2024
IGT	Bullfroggin' Keno	MO-73-IGT-20-25	GI020001BULD002	GI020001BULD005	MO-22-IGT-23-03	10/22/2024
IGT	Caveman Keno	MO-73-IGT-20-30	GAME020001SSID02	GAME020001SSID04	MO-432-IGT-22-14	10/22/2024
IGT	Caveman Keno	MO-73-IGT-20-30	GI020001SSID002	GI020001SSID004	MO-432-IGT-22-14	10/22/2024
IGT	Cleopatra Keno	MO-73-IGT-20-24	GAME020001A5DD03	GAME020001A5DD05	MO-432-IGT-22-17	10/22/2024
IGT	Cleopatra Keno	MO-73-IGT-20-24	GI020001A5DD003	GI020001A5DD005	MO-432-IGT-22-17	10/22/2024
IGT	Da Vinci Diamonds Keno	MO-73-IGT-20-31	GAME020001SSJD02	GAME020001SSJD04	MO-432-IGT-22-18	10/22/2024
IGT	Da Vinci Diamonds Keno	MO-73-IGT-20-31	GI020001SSJD002	GI020001SSJD004	MO-432-IGT-22-18	10/22/2024
IGT	Four Card Keno	MO-73-IGT-20-70	GAME020001SSYD02	GAME020001SSYD04	MO-432-IGT-22-12	10/22/2024
IGT	Four Card Keno	MO-73-IGT-20-70	GI020001SSYD002	GI020001SSYD004	MO-432-IGT-22-12	10/22/2024
IGT	Multi-Card Keno	MO-22-IGT-20-37	GAME020001A5CD07	GAME020001A5CD09	MO-432-IGT-22-10	10/22/2024
IGT	Multi-Card Keno	MO-22-IGT-20-37	GI020001A5CD007	GI020001A5CD009	MO-432-IGT-22-10	10/22/2024
IGT	Super Times Pay Keno	MO-394-IGT-20-08	GAME020001STTD04	GAME020001STTD05	MO-394-IGT-23-11	10/22/2024
IGT	Super Times Pay Keno	MO-394-IGT-20-08	GI020001STTD004	GI020001STTD005	MO-394-IGT-23-11	10/22/2024
IGT	Target Lock Keno	MO-22-IGT-21-35	GAME0200011FTD03	GAME0200011FTD05	MO-432-IGT-22-16	10/22/2024
IGT	Target Lock Keno	MO-22-IGT-21-35	GI0200011FTD003	GI0200011FTD005	MO-432-IGT-22-16	10/22/2024
IGT	Ultimate X Keno	MO-22-IGT-21-24	GAME020001STMD05	GAME020001STMD06	MO-22-IGT-23-29	10/22/2024
IGT	Ultimate X Keno	MO-22-IGT-21-24	GI020001STMD005	GI020001STMD006	MO-22-IGT-23-29	10/22/2024
IGT	Wolf Run Keno	MO-22-IGT-21-47	GAME020001SSKD03	GAME020001SSKD05	MO-432-IGT-22-15	10/22/2024
IGT	Wolf Run Keno	MO-22-IGT-21-47	GI020001SSKD003	GI020001SSKD005	MO-432-IGT-22-15	10/22/2024
IGT	Bills & Thrills	MO-73-KON-20-07	KGI_M712GSC032WD00	No Replacement	No Replacement	
* EXECUTIVE AUTHORITY						
** The GLI Revoked Letters list from the August meeting had the incorrect "Replace By" date of 11/10/2024. The date was corrected to 11/14/2024 and the list was distributed on 08/20/2024 as per Director Bailey						

<b>BMM Approved</b>		<b>Friday, September 13, 2024</b>
<b>Manufacturer</b>	<b>Report Number</b>	<b>Game Name</b>
Aristocrat Technologies Inc.	ATI20121KS	Whisker Wheels Karma Kat

**BMM Revoked****Friday, September 13, 2024**

<b>Revoked Manufacturer</b>	<b>Revoked Game Name</b>	<b>Revoked File Number</b>	<b>Revoked ID Number</b>	<b>New File Number</b>	<b>New ID Number</b>	<b>Replace By</b>
		No Letters				



Eisenhower State Office Building  
700 SW Harrison, Suite 500  
Topeka, KS 66603



Phone: (785) 296-5800  
Fax: (785) 296-0900  
krge@krge.ks.gov  
krge.ks.gov

Don Brownlee, Executive Director

Laura Kelly, Governor

### Hollywood Casino Internal Control Amendments

September 13, 2024

<b><u>Item #/ (Description)</u></b>	<b><u>Regulation Waiver?</u></b>	<b><u>Regulation/IC Reference</u></b>	<b><u>Staff Recommendation</u></b>
HW194 – Chapter A General – Minor Updates	No	KAR 112-104-31, 108-53, 108-3 / Chapter A - General (4.01, 8.01, 10.01, 10.02)	Approval
HW195 – Chapter H CTR Reporting – Minor Updates	No	KAR 112-104-6, 104-9, 108-50 / Chapter H - CTR (1.02, 2.03, 4.03)	Approval
HW196 – Chapter R Cashless Wagering – Minor Updates	No	KAR 112-107-27 / Chapter R – Cashless Wagering (1.01, 2.01, 2.02, 3.02, 3.04, 4.01, 6.02 6.03, 7.02)	Approval

Eisenhower State Office Building  
700 SW Harrison, Suite 500  
Topeka, KS 66603



Phone: (785) 296-5800  
Fax: (785) 296-0900  
krge@krge.ks.gov  
krge.ks.gov

Don Brownlee, Executive Director

Laura Kelly, Governor

### Kansas Star Casino Internal Control Amendments

September 13, 2024

<b><u>Item #/ (Description)</u></b>	<b><u>Regulation Waiver?</u></b>	<b><u>Regulation/IC Reference</u></b>	<b><u>Staff Recommendation</u></b>
KS383 – Updated Forms	No	KAR 112-104-41/Administration Section 14; Cage, Sections 2 & 3; Security, Section 5; Table Games, Section 4	Approval

BOOT HILL CASINO & RESORT  
REPORT PRESENTED TO  
THE KANSAS RACING AND GAMING COMMISSION  
September 13, 2024

By: Diane Giardine

For the month of August 2024, BHCR experienced an increase in Total Gaming Revenue of 9.96% over August 2023. Total Slot Revenue was up 12.93% and Table Games Revenue was down 9.83%.

For the month of August 2024, the total Retail Sportsbook Revenue as defined by the Kansas Lottery was \$14,529.45. This is down 42.40% from August 2023. Total Digital Sportsbook Revenue as defined by the Kansas Lottery was \$2,805,687.68. This is up 60.91% compared to August 2023.

#### Upcoming Promotions & Events

- Weekly Kiosk Games
- Weekly Food and Beverage Specials
- Gift Giveaways
- Rushing for Riches eGameboard
- VIP Promotions
- Blackjack Tournament
- Sportsbook Promotions

#### Upcoming Entertainment & Events

- KC & The Sunshine Band – September 19
- Roots & Boots – November 8
- ZZ Top – November 23

## BOOT HILL CASINO & RESORT

### Lottery Gaming Facility Revenue-Unaudited\*

	August 2024	August 2023	Fiscal YTD 2025	Fiscal YTD 2024
Electronic gaming machines	3,699,285.76	3,275,570.75	7,213,418.15	6,761,559.22
Table games	442,880.59	491,123.46	743,232.96	958,888.54
Other #	<u>50.10</u>	<u>177.32</u>	<u>206.26</u>	<u>268.84</u>
Total Lottery Gaming Facility Revenue	<u><u>4,142,216.45</u></u>	<u><u>3,766,871.53</u></u>	<u><u>7,956,857.37</u></u>	<u><u>7,720,716.60</u></u>
State Share 22%	911,287.62	828,711.74	1,750,508.62	1,698,557.65
Local Share 3%	124,266.49	113,006.15	238,705.72	231,621.50
Problem Gambling Share 2%	82,844.33	75,337.43	159,137.15	154,414.33
Casino Share 73%	3,023,818.01	2,749,816.22	5,808,505.88	5,636,123.12

***\*Unaudited-as reported by the Kansas Lottery Central Computer system.***

***#Other sweeps, principally lost and found funds.***

KANSAS STAR CASINO  
REPORT PRESENTED TO  
THE KANSAS RACING AND GAMING COMMISSION  
September 13, 2024  
By: Alli Kuplen

For the month of August 2024 KSC experienced a 15.1% increase in Total Gross Gaming Revenue compared to August 2023. Total Slot Revenue was up 8.8% and Table Games Revenue was up 54.1%.

For the month of August 2024, the total Retail Sportsbook Revenue as defined by the Kansas Lottery is \$88.4K which is up to August 2023's loss of \$5K. Total Digital Sportsbook Revenue as defined by the Kansas Lottery is \$2.6M. This is up from August 2023's revenue of \$1.57M.

### **Upcoming Promotions & Events**

- Double Down | Friday and Saturdays
- Autumn Sit & Go Slot Tournament | Thursdays in September | 5:00pm - 8:00pm
- Slots & Table Games Spin & Win | Saturdays in September | 5:30pm - 10pm
- Jacket Jackpot | Saturday, September 28 | 2:00pm – 6:00pm
- Bamboo Pillow Gift Giveaway | Friday, September 6 | 4p-9p
- Bamboo Quilted Throw Gift Giveaway | Friday, September 13 | 4p-9p
- Bamboo Sheet Set Gift Giveaway | Friday, September 20 | 4p-9p
- Bamboo Mattress Protector Giveaway | Friday, September 27 | 4p-9p

### **Upcoming Entertainment & Events**

- 38 Special | Arena | September 21

### **August FanDuel Sportsbook Notes**

- \$43.6 million was wagered on FanDuel online.
- The total handle in retail was \$768k for August. This was up over \$300k over July.
- The largest wager in retail was a \$9,560 parlay wager on the Oakland Athletics in doubleheader over the Chicago White Sox on August 6. The wager was a loss.
- MLB was once again the most popular bet on sport in August. It was followed by college football, NFL Preseason, MMA and the WNBA.
- UFC305 did very well on August 18 with a standing room only crowd at KSC. Our handle was \$11,276 and there were 175 bets placed on the fights.

## KANSAS STAR CASINO & RESORT

### Lottery Gaming Facility Revenue-Unaudited\*

	August 2024	August 2023	Fiscal YTD 2025	Fiscal YTD 2024
Electronic gaming machines	11,625,915.10	10,763,906.77	22,720,002.55	22,038,236.17
Table games	2,482,281.50	1,611,816.00	4,338,120.55	3,731,924.80
Other #	<u>77.69</u>	<u>36.00</u>	<u>118.24</u>	<u>135.02</u>
Total Lottery Gaming Facility Revenue	<u>14,108,274.29</u>	<u>12,375,758.77</u>	<u>27,058,241.34</u>	<u>25,770,295.99</u>
State Share 22% (Tier 1)**	3,103,820.34	2,722,666.93	5,952,813.09	5,669,465.12
State Share 2% marginal (Tier 2)**	-	-	-	-
Local Share 3%	423,248.23	371,272.76	811,747.24	773,108.88
Problem Gambling Share 2%	282,165.49	247,515.18	541,164.83	515,405.92
Casino Share 73%	10,299,040.23	9,034,303.90	19,752,516.18	18,812,316.07

***\*Unaudited-as reported by the Kansas Lottery Central Computer system.***

***#Other sweeps, principally lost and found funds.***

HOLLYWOOD CASINO AT KANSAS SPEEDWAY  
REPORT PRESENTED TO  
THE KANSAS RACING AND GAMING COMMISSION  
September 13, 2024

BY: LYDIA GARVEY - GENERAL MANAGER

**August 2024**

**August Admissions**

- August 2024 admissions were up 7.9% compared to last year.

**August 2024 Revenue Numbers**

- Total Gaming Revenue came in at \$14.5M – an increase of 12.5%
- Slot Revenue was \$12.9M – an increase of 12.5%
- Table Games Revenue (including Poker) was \$1.6M – a decrease of 12.4%
- Retail Sportsbook Taxable Revenue lost \$132,251 in August.
- Platform Sportsbook Taxable Revenue in August was \$117,232 which was an increase of 6%.

**Recent/Upcoming Events**

- August 29 – ESPN Bet Grand Opening
- September 1 – Max Bet Mayhem
- September 8 – Game Day Tailgate
- September 14 – Pick, Pull, & Win
- September 27 – 29 – NASCAR Race Weekend
- September 27 – Race Weekend Punch Board
- September 29 – Hollywood Casino 400 Even or Odd Drawing

## HOLLYWOOD CASINO & RESORT

### Lottery Gaming Facility Revenue-Unaudited\*

	August 2024	August 2023	Fiscal YTD 2025	Fiscal YTD 2024
Electronic gaming machines	12,891,431.12	11,455,311.38	25,234,007.47	23,390,756.13
Table games	1,569,310.50	1,396,283.34	2,944,628.93	2,930,364.30
Other #	<u>127.25</u>	<u>5.00</u>	<u>247.70</u>	<u>29.00</u>
Total Lottery Gaming Facility Revenue	<u>14,460,868.87</u>	<u>12,851,599.72</u>	<u>28,178,884.10</u>	<u>26,321,149.43</u>
State Share 22%	3,181,391.15	2,827,351.94	6,199,354.50	5,790,652.87
Local Share 3%	433,826.07	385,547.99	845,366.52	789,634.48
Problem Gambling Share 2%	289,217.38	257,031.99	563,577.68	526,422.99
Casino Share 73%	10,556,434.28	9,381,667.80	20,570,585.39	19,214,439.08

***\*Unaudited-as reported by the Kansas Lottery Central Computer system.***

***#Other sweeps, principally lost and found funds.***





KANSAS CROSSING CASINO + HOTEL  
REPORT PRESENTED TO  
THE KANSAS RACING AND GAMING COMMISSION  
September 13, 2024  
By: Jeff McKain

Kansas Crossing Casino is reporting the following preliminary results for August 2024 vs August 2023.

- -2% Decrease in Admissions
- 5.1% Increase in Coin-In
- 3.6% Increase in Table Drop
- 2.3% Increase in Net Gaming Revenue

**Sports Wagering:**

For the month of August 2024, the total Retail Sportsbook Revenue as defined by the Kansas Lottery reported \$2,245 in revenue vs \$23,688 prior year. Retail wagers were \$489,239 vs \$145,203 in 2023. Digital Sportsbook Revenue as defined by the Kansas Lottery in August was down 15.3%. Total reported revenue was \$743,560. Retail wagers 23,920,413. This was up 37% vs 2023.

**Promotions + Events**

- August
  - Casino Hot Seats every Monday.
  - **Camp 49** promotions every Wednesday.
  - **Pick-A-Chip** table games promotion Fridays.
  - VIP event in the Corral on Saturday the 17<sup>th</sup>.
  - **Summer Times Spins** promotion on Saturdays.
  - Casino gifts on Sunday.
  - Concerts include Little River Band 16<sup>th</sup> and Tribute to ABBA 23<sup>rd</sup>.
- September
  - Casino Hot Seats every Monday.
  - Kiosk games on Tuesdays.
  - **Camp 49** promotions every Wednesday.
  - **Pick-And-Win** table games promotion Fridays.
  - VIP event in the Corral on Saturday the 21<sup>st</sup>.
  - **Strike it Rich** promotion on Saturdays.
  - Casino gifts on Sunday.

Eisenhower State Office Building  
700 SW Harrison, Suite 500  
Topeka, KS 66603



Phone: (785) 296-5800  
Fax: (785) 296-0900  
krgc@krgc.ks.gov  
krgc.ks.gov

Don Brownlee, Executive Director

Laura Kelly, Governor

## KANSAS CROSSING CASINO & RESORT

### Lottery Gaming Facility Revenue-Unaudited\*

	August 2024	August 2023	Fiscal YTD 2025	Fiscal YTD 2024
Electronic gaming machines	3,010,739.71	2,763,858.63	6,066,485.13	5,818,049.55
Table games	223,814.50	356,666.00	497,639.00	719,557.50
Other #	11.00	25.00	49.00	142.00
Total Lottery Gaming Facility Revenue	3,234,565.21	3,120,549.63	6,564,173.13	6,537,749.05
State Share 22%	711,604.35	686,520.92	1,444,118.09	1,438,304.79
Local Share 3%	97,036.96	93,616.49	196,925.19	196,132.47
Problem Gambling Share 2%	64,691.30	62,410.99	131,283.46	130,754.98
Casino Share 73%	2,361,232.60	2,278,001.23	4,791,846.38	4,772,556.81

***\*Unaudited-as reported by the Kansas Lottery Central Computer system.***

***#Other sweeps, principally lost and found funds.***

**August 2024 Casino Financials**

Casino Gaming Revenue for Month Ending August 31, 2024					
Revenue Source	Boot Hill Casino	Kansas Star Casino	Hollywood Casino	Kansas Crossing Casino	Total All Casinos
EGM	\$ 3,699,286	\$ 11,625,915	\$ 12,891,431	\$ 3,010,740	\$ 31,227,372
Table Games	442,881	2,482,282	1,569,311	223,815	4,718,287
Other #	50	78	127	11	266
<b>Total</b>	<b>\$ 4,142,216</b>	<b>\$ 14,108,274</b>	<b>\$ 14,460,869</b>	<b>\$ 3,234,565</b>	<b>\$ 35,945,925</b>

Cumulative Gaming Revenue per Fiscal Year					
Fiscal Year	Boot Hill	Kansas Star	Hollywood	Kansas Crossing	Total All Casinos
2010	\$ 20,663,987	\$ -	\$ -	\$ -	\$ 20,663,987
2011	40,055,280	-	-	-	40,055,280
2012	43,886,501	98,855,928	54,622,687	-	197,365,116
2013	43,353,504	192,187,166	124,993,721	-	360,534,391
2014	39,906,275	181,079,650	132,036,392	-	353,022,317
2015	40,513,186	181,754,051	142,759,065	-	365,026,302
2016	38,937,088	181,600,677	143,833,330	-	364,371,095
2017	40,222,932	178,105,968	144,582,037	8,206,260	371,117,197
2018	41,186,638	182,084,527	148,770,984	32,465,853	404,508,001
2019	41,589,906	184,157,835	150,790,865	34,489,213	411,027,819
2020	32,971,510	150,355,262	122,114,403	28,620,752	334,061,926
2021	43,690,403	172,711,043	124,388,370	33,857,278	374,647,093
2022	49,581,344	162,352,371	149,127,943	39,911,158	400,972,817
2023	48,228,287	161,224,699	156,512,547	41,140,188	407,105,721
2024	47,257,227	159,760,427	162,065,438	38,890,699	407,973,791
2025	7,956,857	27,058,241	28,178,884	6,564,173	69,758,156
<b>Total Since Opening</b>	<b>\$ 620,000,925</b>	<b>\$ 2,213,287,846</b>	<b>\$ 1,784,776,665</b>	<b>\$ 264,145,574</b>	<b>\$ 4,882,211,010</b>

Fund Distribution FY 2025					
Recipients	Boot Hill	Kansas Star	Hollywood	Kansas Crossing	Total All Casinos
State of Kansas	1,750,509	5,952,813	6,199,355	1,444,118	15,346,794
Local Governments	238,706	811,747	845,367	196,925	2,092,745
Problem Gambling and Addictions Fund	159,137	541,165	563,578	131,283	1,395,163
Casino Manager	5,808,506	19,752,516	20,570,585	4,791,846	50,923,454
<b>Total</b>	<b>7,956,857</b>	<b>27,058,241</b>	<b>28,178,884</b>	<b>6,564,173</b>	<b>69,758,156</b>

Fund Distribution Since Opening					
Recipients	Boot Hill	Kansas Star	Hollywood	Kansas Crossing	Total All Casinos
State of Kansas	136,400,204	487,052,004	392,650,866	58,112,026	1,074,215,100
Local Governments	18,600,028	66,398,635	53,543,300	7,924,367	146,466,330
Problem Gambling and Addictions Fund	12,400,019	44,265,757	35,695,533	5,282,911	97,644,220
Casino Manager	452,600,675	1,615,571,450	1,302,886,966	192,826,269	3,563,885,360
<b>Total</b>	<b>620,000,925</b>	<b>2,213,287,846</b>	<b>1,784,776,665</b>	<b>264,145,574</b>	<b>4,882,211,010</b>

*\*Unaudited-as reported by the Kansas Lottery Central Computer system.*

*#Other sweeps, principally lost and found funds.*

## **STAFF AGENDA MEMORANDUM**

**DATE OF MEETING:** September 13, 2024

**AGENDA ITEM:** **FY 2025 & FY 2026 Budgets**

**PRESENTER:** Brandi White, Dir. of Admin, Finance & Audit, Racing and Gaming Comm.

**ISSUE SUMMARY:** The annual budget must be submitted to the Division of the Budget on or before September 16, 2024. Prior to submittal, the Commission approves the Racing and Gaming Commission budget, as well as the State Gaming Agency budget. As part of the budget process a revised FY 2025 and requested FY 2026 budget need to be submitted to the legislature.

### **KRGC General Assumptions**

The revised FY 2025 budget is based upon the following assumptions: 1) full year of operation for Boot Hill Casino; 2) full year of operation for Kansas Star Casino; 3) full year of operation for Hollywood Casino; 4) full year of operation for Kansas Crossing Casino; 5) full year of operation of sports wagering by all four State-owned casinos; 6) regulatory related to the construction and startup operations for a parimutuel facility in Sedgwick County.

The requested budget for FY 2026 is based upon the following assumptions: 1) full year of operation for Boot Hill Casino; 2) full year of operation for Kansas Star Casino; 3) full year of operation for Hollywood Casino; 4) full year of operation for Kansas Crossing Casino; 5) full year of operation of sports wagering by all four State-owned casinos; 6) full year of operation of a parimutuel facility in Sedgwick County.

### **FY2024**

KRGC parimutuel expenditures for FY 2024 were approximately \$170,000 were primarily for salaries and wages expended, primarily as the result of backgrounding and regulatory activities for a parimutuel facility in Sedgwick County and to maintain the Kansas Bred Registry.

KRGC gaming expenditures for FY 2024 reflect the costs of ongoing regulatory oversight for Boot Hill Casino & Resort, Kansas Star Casino, Hollywood Casino at Kansas Speedway, and Kansas Crossing Casino. Total actual FY 2024 expenditures were approximately \$1.1 million or 12% below budget at approximately \$8 million compared to budgeted expenditures of about \$9.1 million. The primary reason for savings was related to salaries and wages for unfilled positions.

**FY 2025**

The KRGC's revised FY 2025 budget is approximately \$10.9 million which is consistent with the approved FY 2025. KRGC has assumed a shrinkage rate of 7.5% for FY 2025 which totals a shrinkage rate of about \$600,000.

The revised budget request for FY 2025 for expanded gaming regulation is approximately \$9.6 million. The revised budget is consistent with the approved budget for expanded gaming regulation and no enhancements are requested.

KRGC's FY 2025 parimutuel racing budget request is approximately \$1.3 million. The revised request is consistent with the approved budget and no enhancements are sought.

The FTE for the requested FY 2025 budget is unchanged from the approved budget. The total FTE requested is 105.5 FTE and includes 13 FTE for parimutuel regulation and 92.5 for expanded gaming regulation. The FTE number does not include a part-time unclassified temporary position under budget policy and procedure guidelines.

The budget includes a request to expend from the Illegal Gaming Enforcement fund for operations related to seizure of illegal gambling devices. Funding derived from seizures of illegal gambling devices is authorized by appropriations. The fund is restricted to use for investigatory activities related to illegal gaming.

**FY 2026**

The KRGC's requested FY 2026 budget is \$11.1 million which is consistent approved FY 2025 budget of \$10.9 million. KRGC has assumed a shrinkage rate of 7.5% for FY 2025 which totals a shrinkage amount of approximately \$700,000.

The budget request for FY 2026 for expanded gaming regulation is approximately \$9.7 million. The requested budget is consistent with the approved budget for FY 2025 for expanded gaming regulation and no enhancements are requested.

In FY 2026 KRGC is requesting a budget of approximately \$1.4 million for the regulation of historical horse racing machines at a parimutuel facility in Sedgwick County. No enhancements are requested.

The number of FTE positions requested in the FY 2026 budget is unchanged from the approved budget FY 2025 budget. The total FTE requested is 105.5 FTE and includes 13 FTE for parimutuel regulation and 92.5 for expanded gaming regulation. The FTE number does not include a part-time unclassified temporary position under budget policy and procedure guidelines.

The budget includes a request to expend from the Illegal Gaming Enforcement fund for operations related to seizure of illegal gambling devices. Funding derived from seizures of illegal gambling devices is authorized by appropriations. The fund is restricted to use for investigatory activities related to illegal gaming.

**COMMISSION ACTION REQUIRED/REQUESTED:** Commission discussion, consideration and approval of the revised FY 2025 budget and requested FY 2026 budget for the Racing & Gaming Commission.

**STAFF RECOMMENDATIONS:** Staff recommends approval of the proposed budget, subject to technical changes to be made upon entering the budget into IBARS, the State Budget System and to potential future changes made by Division of Budget, the Governor and the Legislature.

Kansas State Gaming Agency  
420 SE 6<sup>th</sup>, Suite 3000  
Topeka, KS 66607



Phone: (785) 368-6202  
Fax: (785) 291-3798  
ksga@ks.gov  
www.ksgaming.org

Kala Loomis, Executive Director

Laura Kelly, Governor

**Meeting:** KRGC September 2024 Meeting  
**Agenda Item:** FY 2025-2026 KSGA Budget  
**Presenter:** Brandi White, Director of Admin., Finance & Audit; Racing and Gaming Commission

**My apologies for not being present to address the Commission. If there are any questions, I will be happy to provide you with the answers. Kala Loomis, Executive Director; Kansas State Gaming Agency**

### **KSGA Background**

For over 20 years, four tribes have operated casinos under the tribal-state gaming compacts and the Tribal Gaming Oversight Act. The State Gaming Agency is responsible for ensuring compliance with the tribal-state compacts, the Tribal Gaming Oversight Act, and applicable federal and state laws. The four tribes are assessed annually for the Agency's budget.

The Agency's organization is made up of an enforcement unit (sworn law enforcement officers) and a special investigations unit (special investigators – not sworn law enforcement officers), as well as technical and support staff.

The Kansas State Gaming Agency conducts background investigations on all employees, gaming vendors, and tribal gaming inspectors connected with the gaming operations at each casino. The Agency also monitors gaming operations for compliance and has law enforcement authority over criminal activity. Enforcement Agents conduct compliance inspections, monitor gaming activity at tribal casinos, and conduct criminal investigations.

### **KSGA Budget Process**

KSGA is funded based on Section 25 of the compacts with the four Kansas tribes. The compacts state "The state shall annually make an assessment sufficient to compensate the State for the reasonable and necessary costs of regulating Class III gaming pursuant to this Compact. Reimbursable regulatory expenses under this Section shall include all necessary regulatory costs of the State Gaming Agency...." Sec. 25(A).

Section 25(B) states in part, "on or before August 1st, annually, the State shall render to the Tribe a verified, detailed statement of expenses with supporting documentation of the total cost of regulation for the preceding fiscal year ending June 30, together with proposed assessments for the forthcoming fiscal year based on the preceding fiscal year's cost...." In practice, each year just before August 1, KSGA prepares an assessment letter for that fiscal year for each Tribe.

Section 25(B) goes on to say, "On September 1st annually, the state, after receiving any objections to the proposed assessments and making such changes or adjustments as may be indicated, shall assess the Tribe for the costs of regulation. The Tribe shall thereafter make a payment representing one-third of the assessment within a 20-day period and shall make payments thereafter on January 1st and April 1st annually."

After KSGA goes through the assessment process outlined above with the tribes, KRGC must approve KSGA's budget, according to K.S.A. 74-9803. This statute further explains KRGC's role regarding the KSGA. It reads as follows, "The budget of the state gaming agency, the number, and qualifications of employees of the state gaming agency and expenditures by the state gaming agency for expenses of dispute resolution pursuant to a tribal-state gaming compact shall be subject to approval by the Kansas racing and gaming commission. All other management functions of the state gaming agency shall be administered by the executive director."

#### **FY2025**

The KSGA FY2025 revised budget has overall expenses of approximately \$1.49 million with 15.0 FTE positions. 2 FTEs were previously requested and approved following the passage of SB 84, giving tribal casinos the opportunity to add sports wagering. Only one of these positions is funded, with the anticipation that not all four tribes will be interested in negotiating the tribal-state compacts. The other FTE position is approved but unfunded and will only be filled if all four tribes add sports wagering by renegotiating the tribal-state compacts.

Revenues are based on the Legislatively-approved budgets and are paid by the four tribes. The agency will assume a shrinkage amount of \$20,000. The contractual services and commodities budgets requested are for the amounts of \$316,430 and \$20,250, respectively. KSGA requests a capital outlay budget of \$33,800 to continue the replacement of computer equipment, imaging hardware/software, and other equipment to enhance the agency's cybersecurity.

#### **FY2025**

The KSGA FY2026 budget is approximately \$1.49 million with 15.0 FTE positions. Revenues are based on the Legislatively-approved budgets and are paid by the four tribes. The salaries and wages for the budget year are to provide for a consistent level of employment. Any increases are generally due to the increase in rates for computing fringe benefits and filling an FTE position for sports wagering. The contractual services and commodities budgets requested are the same as the previous year, \$316,430 and \$20,250, respectively. KSGA requests a capital outlay budget of \$33,800 to continue the replacement of computer equipment, imaging hardware/software, and other equipment to enhance the agency's cybersecurity.

**It should be noted that none of the four tribes contested these budget proposals, which were presented to the tribes at the end of July 2024.**

#### **COMMISSION ACTION REQUIRED/REQUESTED:**

Commission discussion, consideration, and approval of the revised FY2025 budget and requested FY2026 budget for the Kansas State Gaming Agency.

#### **STAFF RECOMMENDATIONS:**

Staff recommends approval of the proposed budgets, subject to technical changes to be made upon entering the budget into IBARS, the State's Budget System, and to potential future changes made by the Division of Budget, the Governor, and the Legislature.



<b>NARRATIVE INFORMATION -- DA 400</b>		AGENCY NAME		Kansas Racing and Gaming Commission			
DIVISION OF THE BUDGET STATE OF KANSAS		AGENCY NUMBER		553	FUNCTION NO.		1
		PROGRAM TITLE AND CODE					
		SUBPROGRAM TITLE AND CODE					
<div>Table of Contents</div> <div><div>General Agency Information - DA 400</div><div>Explanation of Receipt Estimates - DA 405</div><div>Racing Program</div><div>    Program Narrative Information - DA 400</div><div>Tribal Gaming Program</div><div>    Program Narrative Information - DA 400</div><div>Expanded Lottery Act Regulation Program</div><div>    Program Narrative Information - DA 400</div><div>Organization Charts</div></div> <div><div>2</div><div>8</div><div>16</div><div>21</div><div>27</div><div>39</div></div>							

## NARRATIVE INFORMATION -- DA 400

DIVISION OF THE BUDGET  
STATE OF KANSAS

AGENCY NAME	Kansas Racing and Gaming Commission	
AGENCY NUMBER	553	Function 1
PROGRAM TITLE AND CODE	Agency-Wide Overview	
SUBPROGRAM TITLE AND CODE		

### **KRGC Mission**

The Kansas Racing and Gaming Commission (KRGC) is dedicated to protecting the integrity of racing and gaming in Kansas through enforcement of Kansas laws and regulations, and is committed to preserving and instilling public trust and confidence.

### **KRGC Philosophy**

The KRGC approaches its duties with a dedicated sense of purpose and responsibility in service to the public in order to maintain the integrity of gaming, to ensure accountability and compliance with gaming regulations, to educate the public concerning illegal and unregulated gaming operations, to educate operators and the public about responsible gambling practices, and to protect the health, safety and welfare of animals racing at licensed Kansas racetracks.

### **Programs Established to Assist with KRGC Mission**

03800 - Expanded Lottery Act Regulation Program  
03900 – Racing Program

### **Programs Established to Assist with State Gaming Agency Goals and Objectives (see Tribal Gaming Program narrative for details)**

03700 – Tribal Gaming Program

### **KRGC Statutory History**

In 1986, Article 15, Section 3 of the Kansas Constitution was amended by Kansas voters to permit pari-mutuel wagering on horse and greyhound races. The Kansas Pari-mutuel Racing Act was enacted by the Kansas Legislature in 1987 setting forth the terms and conditions of the agency's operation as enumerated in Chapter 74, Article 88 of the Kansas Statutes Annotated (KSA). The powers and duties of the Kansas Racing Commission, as it was originally named, may be found in K.S.A. 74-8804, as amended. In 1996, the Kansas Racing Commission was renamed the Kansas Racing and Gaming Commission (KRGC) pursuant to K.S.A. 74-8803a. In 2022, the Kansas Pari-mutuel Racing Act was amended to authorize the operation of historical horse race machines by an organization licensee at a facility located in Sedgwick County utilizing only historical horse race machines approved by KRGC. Wagering on historical horse racing machines is required to be conducted in accordance with the provisions of the Kansas Pari-mutuel Racing Act.

In 2007, the Kansas Legislature enacted the Kansas Expanded Lottery Act (KELA), which is found in K.S.A. 74-8733 through 74-8773. Under KELA, the Kansas Lottery is authorized to own and operate casino-style games, including slot machines and table games, in specified geographical gaming zones, as well as pari-mutuel racetrack facilities located within certain of those gaming zones. The KRGC, under KELA, regulates and licenses lottery and racetrack gaming facility managers under contract with the Kansas Lottery to operate the games owned by the Kansas Lottery. In addition, the KRGC licenses gaming and non-gaming suppliers used by lottery or racetrack gaming facility managers. In 2022, KELA was amended to allow the conduct of sports wagering by lottery gaming facilities. The amendment expanded KRGC's oversight of lottery gaming facility games to include regulation of sports wagering.

### **State Gaming Agency Executive and Statutory History**

In 1995, the State of Kansas by Executive Order No. 95-177 designated the Kansas Department of Commerce & Housing as the State Gaming Agency to carry out certain duties and responsibilities under the gaming compacts entered into with resident Native American Tribes until the Kansas Legislature could enact legislation to designate a permanent State Gaming Agency.

In 1996, the Kansas Legislature enacted the Tribal Gaming Oversight Act, which is set forth in K.S.A. 74-9801 through 74-9809, as amended. Under K.S.A. 74-9803, the State Gaming Agency was attached to the KRGC for budget purposes, human resource assistance, and dispute resolution under the terms of the tribal-state gaming compacts. All other management functions of the State Gaming Agency are administered by its executive director. (See Tribal Gaming Program narrative)

In 2022, the Kansas Expanded Lottery Act was expanded to allow for the four federally recognized Indian tribes to submit a request for negotiation of a new or existing gaming compact regarding sports wagering. This would allow the four Class III tribal casinos to negotiate their Compacts to include language that would allow them to conduct sports wagering both on the tribal reservations and remotely via online sports wagering platforms.

## NARRATIVE INFORMATION -- DA 400

DIVISION OF THE BUDGET  
STATE OF KANSAS

AGENCY NAME	Kansas Racing and Gaming Commission
AGENCY NUMBER	553
PROGRAM TITLE AND CODE	Agency-Wide Overview
SUBPROGRAM TITLE AND CODE	

### KRGC/Budget Overview

#### **Background**

The passage of KELA provided for the creation of four gaming zones in which one lottery gaming facility manager would be selected. In addition, KELA authorized the operation of slot machines at pari-mutuel racetrack facilities under specific conditions. Four lottery gaming facilities have been constructed to date and are in operation in the southwest, northeast, south-central gaming, and southeast gaming zones. In 2022 KELA was expanded to allow for the four lottery gaming facility managers to conduct sports wagering both on premises and remotely via online sports wagering platforms. Additionally, no licensed pari-mutuel racetrack facilities currently exist in Kansas, but the Kansas Pari-mutuel Racing Act was revised 2022 to allow for historical horse racing machines to be utilized by a licensed parimutuel facility in Sedgwick county.

In December 2009 the Boot Hill Casino & Resort (Boot Hill Casino) began operations in Dodge City, Kansas in the southwest gaming zone. Boot Hill Casino has over 600 state-owned slot machines, 16 table games and 5 poker tables. The Boot Hill Casino is flanked on one side by the Dodge City/Ford County United Wireless events and convention center, which includes a 6,000 seat arena, and on the other side by a Hampton Inn that opened in March 2012.

In 2010, Peninsula Gaming, LLC (Peninsula) was selected as the lottery gaming facility manager for the south-central gaming zone. Peninsula constructed a temporary gaming facility known as the Kansas Star Arena Casino that opened in December 2011 in Mulvane, Kansas. The Kansas Star Casino's permanent gaming facility with several dining options opened in December 2012. A connected Hampton Inn with 150 rooms opened in November 2012 and an additional 150 hotel rooms opened in July 2014. The temporary gaming facility has been reconfigured into an entertainment facility. The convention center and the equestrian facilities were completed in January of 2015. Boyd Gaming, Inc. acquired 100% of Peninsula in an equity transaction in November 2012.

The third lottery gaming facility is located in the northeast gaming zone and opened February 2012 in Wyandotte County. The facility, known as the Hollywood Casino at Kansas Speedway (Hollywood Casino), is operated by Kansas Entertainment, LLC, which is a joint venture between Penn National Gaming, Inc. and International Speedway, Corp. International Speedway, Corp. owns and operates the Kansas Speedway and the Hollywood Casino is located on turn two of the Kansas Speedway.

The fourth lottery gaming facility, Kansas Crossing Casino, is located in the southeast gaming zone and opened in March of 2017 in Pittsburg, Kansas. The facility has 625 slot machines, 16 table games, a 123-room Hampton Inn and Suites and a 600 seat entertainment complex.

### KRGC General Assumptions

The revised FY 2025 budget is based upon the following assumptions: 1) full year of operation for Boot Hill Casino; 2) full year of operation for Kansas Star Casino; 3) full year of operation for Hollywood Casino; 4) full year of operation for Kansas Crossing Casino; 5) full year of operation of sports wagering by all four State-owned casinos; 6) nine months of regulatory obligations related to the construction of a parimutuel facility in Sedgwick county.

The submitted budget for FY 2026 is based upon the following assumptions: 1) full year of operation for Boot Hill Casino; 2) full year of operation for Kansas Star Casino; 3) full year of operation for Hollywood Casino; 4) full year of operation for Kansas Crossing Casino; 5) full year of operation of sports wagering by all four State-owned casinos; 6) full year of regulatory operations related to a parimutuel facility in Sedgwick county.

The Kansas Bred Registry Program registers Kansas bred horses in various categories for the purpose of distributing moneys credited to the Kansas horse breeding development fund. Distributions from this fund include purse supplements, stakes and awards, and equine research. The registry was previously administered under a contract that expired between the KRGC and the Kansas Horsemen's Association. Although licensed pari-mutuel racing activities are presently dormant, interest in encouraging a resumption of such activities has been high, which warrants the continuation of the registry program. It is also assumed that the KRGC will assume the responsibilities of the Kansas Greyhound Association regarding the administration of the Kansas bred greyhound registry in the future. Under current conditions funding for the maintenance of the registry programs will come from existing State Racing Funds and registration fees deposited into the State Racing Fund.

The KRGC renews its request to continue the practice of using no-limit fee funds for all funds, thus allowing the necessary flexibility to regulate racing and gaming activities as conditions change. Additionally, the KRGC has requested that the current balances in all funds related to pari-mutuel activities be maintained in the event licensed pari-mutuel racing activity resumes in Kansas and to fund the administration of the registry programs.

## NARRATIVE INFORMATION -- DA 400

DIVISION OF THE BUDGET  
STATE OF KANSAS

AGENCY NAME

Kansas Racing and Gaming Commission

AGENCY NUMBER

553

PROGRAM TITLE AND CODE

Agency-Wide Overview

SUBPROGRAM TITLE AND CODE

### **KRGC Budget Overview (continued)**

#### **Current Year Comparison of FY 2025 Approved and Revised Budget Expenditures**

The KRGC's revised FY 2025 budget is approximately \$10.9 million which is consistent with the approved FY 2025 budget of \$10.9 million. KRGC has assumed a shrinkage rate of 7.5% for FY 2025 which totals a shrinkage rate of about \$600,000. There are two programs within the budget. The expanded gaming regulation budget is approximately \$9.6 million and the parimutuel gaming program budget is approximately \$1.3 million.

The FTE for the requested FY 2025 budget is unchanged from the approved FY 2025 FTE of 105.5 FTE requested. The FTE number does not include a part-time unclassified temporary position under budget policy and procedure guidelines.

#### **Budget Year – Comparison of FY 2025 approved and requested FY 2026 Budget Expenditures**

The KRGC's requested FY 2026 budget is \$11.1 million which is consistent with the approved FY 2025 budget of \$10.9 million. KRGC has assumed a shrinkage rate of 7.5% for FY 2026 which totals a shrinkage amount of approximately \$700,000. There are two programs within the budget. The expanded gaming regulation budget is approximately \$9.7 million and the parimutuel gaming program budget is approximately \$1.4 million.

The number of FTE positions requested for the FY 2026 budget is consistent with the approved FY 2025 budget of 105.5 FTE. The FTE number does not include a part-time unclassified temporary position under budget policy and procedure guidelines.

## NARRATIVE INFORMATION -- DA 400

DIVISION OF THE BUDGET

STATE OF KANSAS

AGENCY NAME Kansas Racing and Gaming Commission

AGENCY NUMBER 553

PROGRAM TITLE AND CODE Agency-Wide Overview

SUBPROGRAM TITLE AND CODE

### **KRGC Budget Overview (continued)**

#### **KRGC Revenues**

All expenditures by the KRGC are currently paid by the lottery gaming facility managers with the exception of costs associated with the licensing of vendors who pay their own costs. Expenditures are allocated between direct and indirect costs with direct costs being those expenditures identified with a specific lottery gaming facility manager, which primarily includes the cost of the KRGC staff located at each lottery gaming facility. Direct costs account for 65% of total costs. The remaining 35% of total costs are indirect costs that are primarily associated with the Topeka office, and are generally allocated among the lottery gaming facility managers based upon a number of factors (i.e. revenues, direct expenses, number of slot machines and table games, number of employees, etc.). In order for the KRGC to be completely self-funded it bills the lottery gaming facility managers quarterly in advance based upon approved budget expenditures. The first quarterly billings were for six months each to establish the necessary cash balances for ongoing operations. Currently, the KRGC bills for the quarter representing 4-6 months in the future and reconciles quarterly billings to actual expenditures for the quarter just ended making the necessary adjustments to the quarterly billing.

The lottery gaming facility managers also remit payments to cover the cost of the background investigations of their employees. As noted above, certain vendors doing business with lottery gaming facility managers also remit payments to cover the cost of their background investigations. Up front deposits are required based upon an estimate of the total background cost and are supplemented with additional payments if the amount of the deposit is insufficient to cover the actual costs incurred as the background investigation progresses. If the payments received exceed the background costs incurred, the vendor is sent a refund of the unused funds.

### **Review of KRGC Prior Year - 2024**

#### **Racing Program**

KRGC expenditures for FY 2024 of approximately \$170,000 were for regulation of parimutuel wagering and were predominately for salaries and wages, primarily as the result of backgrounding and regulatory activities for a parimutuel facility in Sedgwick County and to maintain the Kansas Bred Registry.

#### **Expanded Lottery Act Gaming Program**

KRGC expenditures for FY 2024 reflect the costs of ongoing regulatory oversight for Boot Hill Casino & Resort, Kansas Star Casino, Hollywood Casino at Kansas Speedway, and Kansas Crossing Casino. Total actual FY 2024 expenditures were approximately \$1.1 million or 12% below budget at approximately \$8 million compared to budgeted expenditures of about \$9.1 million. The primary reason for savings was related to salaries and wages for unfilled positions.

## NARRATIVE INFORMATION -- DA 400

DIVISION OF THE BUDGET  
STATE OF KANSAS

AGENCY NAME	Kansas Racing and Gaming Commission
AGENCY NUMBER	553
PROGRAM TITLE AND CODE	Agency-Wide Overview
SUBPROGRAM TITLE AND CODE	

### Agency Wide Overview of Current Year Estimate and Budget Year Scenarios

#### Current Year - 2025

##### **Racing Program**

The budget is built on the assumptions that 1) there will be regulatory activity related to the construction and startup operations of a parimutuel facility in Sedgwick County; 2) KRGC staff will administer to the Kansas Bred Registry Program in FY 2025. The budget is consistent with the approved FY 2025 budget.

##### **Tribal Gaming Program**

The budget for the current fiscal year remains unchanged from the approved budget.

##### **Expanded Lottery Act Regulation Program**

The current FY 2025 budget is based upon the following assumptions: 1) full year of operation for Boot Hill Casino; 2) full year of operation for Kansas Star Casino; 3) full year of operation for Hollywood Casino; 4) full year of operation for Kansas Crossing Casino; 5) a full year of sports wagering operations.

#### Supplemental Package - FY 2025

##### **Racing Program**

The Racing Program does not request any supplemental funding for the current year.

##### **Tribal Gaming Program**

The Tribal Gaming Program does not request any enhancement packages.

##### **Expanded Gaming Program**

The Expanded Gaming Program does not request any supplemental funding for the current year.

#### Budget Year Information - FY 2026

##### **Racing Program**

The budget is built on the assumptions that 1) there will be a full year of regulatory operations for parimutuel facility in Sedgwick County; 2) KRGC staff will administer the Kansas Bred Registry Program in FY 2026. The budget is consistent with the approved FY2025 budget.

##### **Tribal Gaming Program**

The Tribal Gaming Program previously requested and was approved for an additional FTE for an enforcement agent position that was left unfunded and will only be added if all four tribal casinos conduct sports wagering. This position would assist with the oversight of sports wagering at the tribal casinos and the increased load of background investigations; it would require an additional \$75,000.

##### **Expanded Lottery Act Regulation Program**

The requested FY 2026 budget is based upon the following assumptions: 1) full year of operation for Boot Hill Casino; 2) full year of operation for Kansas Star Casino; 3) full year of operation for Hollywood Casino; 4) full a year of operation for Kansas Crossing Casino; 5)full year of sports wagering operations.

<b>NARRATIVE INFORMATION -- DA 400</b>		AGENCY NAME	Kansas Racing and Gaming Commission
		AGENCY NUMBER	553
DIVISION OF THE BUDGET		PROGRAM TITLE AND CODE	Agency-Wide Overview
STATE OF KANSAS		SUBPROGRAM TITLE AND CODE	
<u>Agency Wide Overview of Current Year Estimate and Budget Year Scenarios (continued)</u>  <b>Supplemental Package - FY 2026</b> <b>Racing Program</b> The Racing Program does not request any supplemental packages. <b>Tribal Gaming Program</b> The Tribal Gaming Program does not request any supplemental packages. <b>Expanded Lottery Act Regulation Program</b> The Expanded Gaming Program does not request any supplemental packages.			

**EXPLANATION OF RECEIPT ESTIMATES**

AGENCY NAME: Kansas Racing and Gaming Commission

**DA 405**DIVISION OF THE BUDGET  
STATE OF KANSAS

AGENCY--SUBAGENCY 553-00

FUNCTION NO. 01

PROGRAM TITLE AND CODE Tribal Gaming Program - 03700

SUBPROGRAM TITLE AND CODE:

DOB USE ONLY

**TRIBAL GAMING PROGRAM****Tribal Gaming Fund - 2320**

Revenues are based on the Legislative approved budgets and are approved and paid by the compacted tribes.

	<b>FY21</b> <b>Actuals</b>	<b>FY22</b> <b>Actuals</b>	<b>FY23</b> <b>Actuals</b>	<b>FY24</b> <b>Actuals</b>	<b>FY25</b> <b>Estimate</b>	<b>FY26</b> <b>Estimate</b>
Other Service Charges	1,380,365	1,416,804	1,282,806	1,298,399	1,566,009	1,576,040
Interchange of Gvt Employee Payroll						
Operating Transfer In	450,000	450,000	450,000	450,000	450,000	450,000
Operating Transfer Out	(450,000)	(450,000)	(450,000)	(450,048)	(451,000)	(451,000)



## EXPLANATION OF RECEIPT ESTIMATES

**DA 405**

DIVISION OF THE BUDGET  
STATE OF KANSAS

AGENCY NAME:

AGENCY--SUBAGENCY CODES:

PROGRAM TITLE AND CODE:

SUBPROGRAM TITLE AND CODE:

Kansas Racing and Gaming  
Commission

553-00

Racing Program - 03900

### RACING PROGRAM

#### State Racing Fund - 5131

K.S.A 74-8826 established the State Racing Fund. All taxes on pari-mutuel wagering, admission tax, application fees and fines must be credited to the fund. The Racing Program is currently on hold as all tracks in the State have ceased operations.

This budget assumes there will be a single racetrack in Sedgwick County operating historical horse racing machines to generate revenues and expenditures to this fund in FY 2025. The estimated revenues projected in FY 2025, and FY 2026 are attributed to fees charged for the registration of horses and greyhounds for the Kansas Bred Registry Programs, application and licensee fees, and regulatory expenditures. The registration of horses was formerly administered by the Kansas Horsemen's Association but will now be done by KRG staff. Additionally, the greyhound registry is currently maintained by the Kansas Greyhound Association.

	Actual FY17	Actual FY18	Actual FY19	Actual FY20	Actual FY21	Actual FY22	Actual FY23	Actual FY24	Estimate FY25	Estimate FY26
Pari-mutuel Tax	-	-	-	-	-	-	-	-	-	-
Pari-mutuel Tax - Simulcast	-	-	-	-	-	-	-	-	-	-
Admissions Tax	-	-	-	-	-	-	-	-	-	-
Charges - Inspect, Examine, Audit	360	-	-	-	-	-	125,000	141,578	1,600,000	1,600,000
License Fee - Personal Service	-	-	-	-	-	-	-	-	-	-
License Fee - Business	-	758	188	-	-	-	-	-	-	-
License Fee - Other	-	-	-	-	-	-	-	-	-	-
Fines	-	1,300	-	1,723	1,075	1,649	-	-	1,000	1,000
Other Miscellaneous Revenue	-	-	-	-	-	-	-	-	-	-
Operating Transfer In	-	-	-	-	-	-	-	-	-	-
Operating Transfer Out	-	-	-	-	-	-	-	-	-	-
Total Receipts	360	2,058	188	1,723	1,075	1,649	125,000	141,578	1,601,000	1,601,000



## EXPLANATION OF RECEIPT ESTIMATES

DA 405

DIVISION OF THE BUDGET

STATE OF KANSAS

AGENCY NAME:

AGENCY--SUBAGENCY CODES:

PROGRAM TITLE AND CODE:

SUBPROGRAM TITLE AND CODE:

Kansas Racing and Gaming Commission

553-00

Racing Program - 03900

### Horse Breeding Development Fund - 2516

K.S.A. 74-8829 established the Horse Breeding Development Fund. Moneys credited to the Kansas horse breeding development fund must be proportionally categorized by various breeds of horses based upon participation in live races. Money from each category must be used to provide purse supplements, stakes and awards for Kansas-bred horses and research grants to Kansas regents institutions for equine research.

K.S.A. 74-8821 states all horse breakage proceeds be credited to the fund. K.S.A. 74-8767 directs 25% of the net gaming machine income from racetrack facilities deposited to the Live Horse Racing Purse Supplement Fund be transferred to this fund. HB2551 that for FY 2025 and FY 2026 that division of funds generated from K.S.A. 74-8823(a)(5) will first be used to cover the expenses of KRGK related to parimutuel activities the remaining funds will be designated as follows 2/3 to the Horse Fair Racing Benefit Fund and 1/3 to the Kansas Horse Breeding Development Fund.

**HB 2551 states that for FY 2025 and FY 2026 funds generated from K.S.A. 74-8823(a)(5) will first be used to cover the expenses of KRGK related to parimutuel activities 1/3 of the remaining funds will be transferred to the Horse Breeding Development Fund. KRGK does not have an estimate of the revenue that will generated for the fund at this time.**

	Actual FY17	Actual FY18	Actual FY19	Actual FY20	Actual FY21	Actual FY22	Actual FY23	Actual FY24	Estimate FY25	Estimate FY26
Breakage	-	-	-	-	-	-	-	-	-	-
Unclaimed Winning Tickets	-	-	-	-	-	-	-	-	-	-
Other Misc Revenue	-	-	-	-	-	-	-	-	-	-
Operating Transfer In	-	-	-	-	-	-	-	-	-	-
Total	-	-	-	-	-	-	-	-	-	-

### Live Horse Racing Purse Supplement Fund - 2546

K.S.A. 74-8767 establishes the Live Horse Racing Purse Supplement Fund. The statute requires that 25% of moneys deposited to this fund be transferred to the Horse Breeding Development Fund. The remainder of the funds are to be distributed as purse supplements in accordance with rules and regulations adopted by the KRGK with recommendations by the official registering agency. K.S.A. 74-8747 directs 7% of the net gaming machine income from racetrack facilities, up to a maximum of \$3,750 per machine, be deposited to this fund.

This budget assumes there will be no revenue to, or expenditures from, this fund in FY 2025 or FY 2026. There has been no activity in this fund in previous years.

### Live Greyhound Racing Purse Supplement Fund - 2557

K.S.A. 74-8767 establishes the Live Greyhound Racing Purse Supplement Fund. The statute requires that 25% of the moneys deposited to this fund be transferred to the Greyhound Breeding Development Fund. The remainder of the funds are to be distributed as purse supplements in accordance with rules and regulations adopted by the KRGK with recommendations by the official registering agency. K.S.A. 74-8747 directs 7% of the net gaming machine income from racetrack facilities, up to a maximum of \$3,750 per machine, be deposited to this fund.

This budget assumes there will be no revenue to, or expenditures from, this fund in FY 2025, or FY 2026. There has been no activity in this fund in previous years.



**EXPLANATION OF RECEIPT ESTIMATES****DA 405**DIVISION OF THE BUDGET  
STATE OF KANSAS

AGENCY NAME:

AGENCY--SUBAGENCY CODES:

PROGRAM TITLE AND CODE:

SUBPROGRAM TITLE AND CODE:

Kansas Racing and Gaming Commission

553-00

Racing Program - 03900

**Greyhound Breeding Development Fund - 2601**

K.S.A. 74-8831 established the Greyhound Breeding Development Fund and requires that all moneys credited to this fund be used only for the benefit of greyhounds. The statute directs moneys to be used as follows: 15% is credited to the greyhound tourism fund, 35% for research conducted within the state of Kansas relating to the prevention of injury to and disease of greyhounds; 50% for purse supplements, and an amount determined by the commission, but not to exceed \$30,000 is used to pay a portion of the administrative costs of the official registering agency.

K.S.A. 74-8822 states all monies from unclaimed winning ticket wagers on greyhounds be credited to this fund. K.S.A. 74-8767 directs 25% of the net gaming machine income from racetrack facilities deposited to the Live Greyhound Racing Purse Supplement Fund be transferred to this fund.

The remainder of the moneys in this fund at the end of FY 2013 were swept by the legislature at the beginning of FY 2014. This budget assumes that there will be no revenue to, or expenditures from this fund in FY 2025, or FY 2026.

	Actual FY17	Actual FY18	Actual FY19	Actual FY20	Actual FY21	Actual FY22	Actual FY23	Actual FY24	Estimate FY25	Estimate FY26
Other	-	-	-	-	-	-	-	-	-	-
Unclaimed Winning Tickets	-	-	-	-	-	-	-	-	-	-
Operating Transfers Out	-	-	-	-	-	-	-	-	-	-
Transfer Out (Swept by Legislature)	-	-	-	-	-	-	-	-	-	-
	-	-	-	-	-	-	-	-	-	-

**Greyhound Promotion and Development Fund - 2561**

K.S.A. 74-8842 creates the Greyhound Promotion and Development Fund and is funded through a voluntary greyhound purse check off program which provides for the deduction of 2% from all purses paid to kennels and greyhound owners who participate in the program. Greyhound owners and kennel operators are provided the opportunity annually not to participate in the program. Moneys deposited into the fund are distributed to the official greyhound registering agency and are to be used only for the development, promotion and representation of the greyhound industry in Kansas.

Language was included in the appropriations bill for the 2009 and 2010 legislative sessions that redirected the 15% transfer from the Greyhound Breeding Development Fund to the Greyhound Tourism Fund (in the Department of Commerce) to this fund.

The remainder of the moneys in this fund at the end of FY 2013 were swept by the legislature at the beginning of FY 2014. This budget assumes that there will be no revenue to, or expenditures from this fund in FY 2025, or FY 2026.

	Actual FY17	Actual FY18	Actual FY19	Actual FY20	Actual FY21	Actual FY22	Actual FY23	Actual FY24	Estimate FY25	Estimate FY26
Operating Transfer In	-	-	-	-	-	-	-	-	-	-
Other Misc Revenue	-	-	-	-	-	-	-	-	-	-
Transfer Out (Swept by Legislature)	-	-	-	-	-	-	-	-	-	-
	-	-	-	-	-	-	-	-	-	-

## EXPLANATION OF RECEIPT ESTIMATES

**DA 405**

DIVISION OF THE BUDGET  
STATE OF KANSAS

AGENCY NAME:

AGENCY--SUBAGENCY CODES:

PROGRAM TITLE AND CODE:

SUBPROGRAM TITLE AND CODE:

Kansas Racing and Gaming Commission

553

Expanded Gaming Program - 03800

### EXPANDED GAMING PROGRAM

#### Expanded Lottery Act Regulation Fund - 2535

The Kansas Expanded Lottery Act specifies that the cost of regulation is to be incurred by the lottery gaming facility managers. In 2007, the KRGK obtained a loan from the PMIB to finance expanded gaming regulation until the lottery gaming facility managers were selected and approved. During the 2008 legislative session, the amount of the loan from PMIB was increased to \$5,000,000 to cover KRGK operating costs for FY09 and FY10 and the term of the loan was extended through FY12. The balance of the loan was repaid in FY12.

Revenue projections for FY 2025 and FY 2026 include billings and payments from the currently operating casinos for the KRGK's direct and indirect costs associated with the operations of the Hollywood Casino, the Kansas Star Casino, the Boot Hill Casino, and the Kansas Crossing Casino. Payments are received in advance of expenditure on a quarterly billing cycle.

	Actual FY17	Actual FY18	Actual FY19	Actual FY20	Actual FY21	Actual FY22	Actual FY23	Actual FY24	Estimate FY25	Estimate FY26
PMIB Loan Proceeds	-	-	-	-	-	-	-	-	-	-
LGFRB applicant reimbursements	-	-	-	-	-	-	-	-	-	-
Hollywood Start-up Reimb.	-	-	-	-	-	-	-	-	-	-
Sumner Casino Start-up Reimb.	-	-	-	-	-	-	-	-	-	-
Boot Hill Start-up Reimb.	-	-	-	-	-	-	-	-	-	-
Hollywood Ops Reimbursement	1,753,827	1,807,405	1,754,182	1,368,001	2,364,914	1,856,409	2,315,520	2,321,425	1,500,000	2,360,000
Sumner Casino Ops Reimbursement	1,825,345	1,865,898	1,907,527	1,474,782	2,589,199	1,913,545	2,281,907	2,591,385	1,800,000	2,440,000
Boot Hill Ops Reimbursement	942,606	982,583	1,090,169	732,669	1,303,987	1,171,772	1,392,363	1,642,267	1,250,000	1,785,000
KS Crossing OPS Reimbursement	1,879,359	1,088,448	1,162,074	883,327	1,463,008	1,136,664	1,332,257	1,514,800	1,250,000	1,840,000
Administrative Costs Allocation GC	-	-	-	-	-	-	-	510,837	500,000	750,000
Facility Mgr Background Deposits	-	-	-	-	-	-	-	-	-	-
Vendor Background Fees	-	-	-	-	-	-	-	-	-	-
Miscellaneous Revenue	3,675	388	4,695	35,806	1,231	3,827	1,007	31,284	-	-
Transfer In	-	-	-	-	-	-	-	375,000	375,000	375,000
Transfer Out	-	-	-	-	-	(16,098)	-	-	-	-
	6,404,812	5,744,722	5,918,647	4,494,585	7,722,339	6,066,119	7,323,054	8,986,998	6,675,000	9,550,000

**EXPLANATION OF RECEIPT ESTIMATES****DA 405**DIVISION OF THE BUDGET  
STATE OF KANSAS

AGENCY NAME: Kansas Racing and Gaming Commission

AGENCY--SUBAGENCY CODES: 553

PROGRAM TITLE AND CODE: Expanded Gaming Program - 03800

SUBPROGRAM TITLE AND CODE:

**Gaming Background Investigations Fund - 2682**

The Gaming Background Investigations Fund is established by appropriations act to be used for deposits by gaming and non-gaming vendors for background investigation costs. Expenses for backgrounds will be charged to this fund and tracked individually by project code for each vendor as each vendor is entitled to a refund of unspent deposits.

	Actual FY17	Actual FY18	Actual FY19	Actual FY20	Actual FY21	Actual FY22	Actual FY23	Actual FY24	Estimate FY25	Estimate FY26
Examination Deposits	176,153	138,652	175,742	130,155	279,316	329,115	426,736	323,294	400,000	375,000
Refunds	(9,440)	-	-	-	-	-	-	-	-	-
	166,713	138,652	175,742	130,155	279,316	329,115	426,736	323,294	400,000	375,000

**Education and Training Fund - 2459**

The KRGC Education and Training Fee Fund is established by appropriations act and its purpose is to allow the KRGC to receive and expend funds for training opportunities that could be offered to others outside of the KRGC. This fund is not budgeted and is used only as training opportunities arise. In FY 2024 and FY 2025, time permitting, we plan to seek out training opportunities for in-house staff and to invite employees from other agencies to help offset our training costs.

**Illegal Gaming Enforcement Fund - 2734**

The KRGC became the primary coordinator for state-level illegal gambling complaints after the passage of the Expanded Lottery Act, but no funds were appropriated for its activities. The Illegal Gaming Enforcement Fund was established during the 2011 legislative session and initial funding of \$5,000 was provided via a transfer from the state racing fund. A proviso was included that would allow KRGC the ability to retain funds seized as part of illegal gaming enforcement operations. For this budget submission we would again request that the proviso included for the FY15 appropriations act be retained for the FY2025, and FY 2026 appropriations.

(1) A proviso that would allow KRGC the ability to retain funds seized as part of illegal gaming enforcement operations and deposited into the fund to be used for illegal gaming enforcement activities.

(2) A proviso that would allow the KRGC to receive moneys from state or federal seizures or awards related to illegal gaming enforcement activities of the agency.

(3) The fund is a no-limit fund so that monies may be used in a timely manner for enforcement activities.

	Actual FY17	Actual FY18	Actual FY19	Actual FY20	Actual FY21	Actual FY22	Actual FY23	Actual FY24	Estimate FY25	Estimate FY26
Seizures	-	60	(919)	113,908	7,627	(13,493)	15,084	255	5,000	5,000
Transfers	-	-	-	-	-	-	-	-	-	-
	-	60	(919)	113,908	7,627	(13,493)	15,084	255	5,000	5,000

**Gaming Machine Examination Fund - 2998**

KRGC requests that the Gaming Machine Examination Fund be re-established as a no-limit fee fund for the purpose of receiving certification fees from electronic gaming machine manufacturers to meet the requirements of K.S.A. 74-8750(c). All revenues received for the Gaming Machine Examination Fund will be from electronic gaming equipment manufacturers and any unused funds will be returned to the appropriate vendor.

	Actual FY17	Actual FY18	Actual FY19	Actual FY20	Actual FY21	Actual FY22	Actual FY23	Actual FY24	Estimate FY25	Estimate FY26
Gaming Machine Exam Deposits	-	-	-	-	-	-	-	-	-	-
	-	-	-	-	-	-	-	-	-	-

## NARRATIVE INFORMATION -- DA 400

DIVISION OF THE BUDGET  
STATE OF KANSAS

AGENCY NAME	Kansas Racing and Gaming Commission
AGENCY NUMBER	553
PROGRAM TITLE AND CODE	Parimutuel Gaming Program - 03900
SUBPROGRAM TITLE AND CODE	Racing Regulation

### PARIMUTUEL GAMING PROGRAM *Subprogram Racing Regulation*

#### **Purpose:**

The commission's primary purpose is to regulate the pari-mutuel industry through enforcement of the Kansas parimutuel racing act, K.S.A. 74-8801, et seq., and rules and regulations adopted by the commission. The commission also collects pari-mutuel taxes and promotes the pari-mutuel industry through the Kansas-bred development funds for horses and greyhounds and the horse fair racing benefit fund.

**Required By Statute:** Yes.

**Maintenance of Effort or Matching Requirement:** None.

**Statutory Requirements:** K.S.A. 74-8801 through 74-8842.

#### **Consequences of Not Funding:**

Without this program there would be no regulatory oversight of pari-mutuel ownership and operations in Kansas including historical horse racing machines. Additionally, there would be no mechanism to protect the citizens of Kansas from the criminal element associated pari-mutuel activity or ensure integrity of pari-mutuel activity in Kansas. Currently, there are breeders of horses and greyhounds who continue to register their animals as Kansas bred. Not funding this program would result in their being no mechanism for these breeders to be able to register their animals as Kansas bred. The distinction can be important within the industry and not having this mechanism may have a negative impact on some breeders. Not funding this program would result in the loss of historical documents prior to their approved destruction.

#### **PROGRAM'S STATUTORY HISTORY:**

**K.S.A. 74-8804 (a)** through (q) require the commission to observe and inspect all racetrack facilities; administer oaths and take depositions; examine any books, paper records or memoranda of any licensee, racetrack or business involved in simulcasting races to racetrack facilities in Kansas; issue subpoenas; allocate race meeting dates, racing days, and hours to all organization licensees; authority to exclude, or cause to be expelled from any race meeting or racetrack facility or to prohibit a licensee from conducting business with any person who has violated the provision of this act or any rule and regulation or order of the commission, been convicted of a violation of the racing or gambling laws or has been adjudicated of committing as a juvenile an act which if committed by an adult, would constitute such a violation, whose person reflects adversely on the honesty and integrity of horse or greyhound racing or interferes with the conduct of a race meeting; review and approve all proposed construction and major renovations to racetrack facilities; review and approve all proposed contracts with racetracks or businesses involved in simulcasting races to racetrack facilities in Kansas; suspend a horse or greyhound from participation in races; impose a civil fine; adopt rules and regulations and require fingerprinting and background information of all persons for employment, license or simulcasting license.

#### **PROGRAM GOAL**

To maintain the integrity of pari-mutuel wagering systems and to protect the public and the health, safety and welfare of the racing animal. Ensure the integrity of pari-mutuel activity associated with historical horse racing machines.



**NARRATIVE INFORMATION -- DA 400**

DIVISION OF THE BUDGET  
STATE OF KANSAS

AGENCY NAME  
AGENCY NUMBER  
PROGRAM TITLE AND CODE  
SUBPROGRAM TITLE AND CODE

Kansas Racing and Gaming Commission  
553  
Parimutuel Gaming Program - 03900

**PARIMUTUEL GAMING PROGRAM****Salaries and Wages**

	<b>FY17</b>	<b>FY18</b>	<b>FY19</b>	<b>FY20</b>	<b>FY21</b>	<b>FY22</b>	<b>FY23</b>	<b>FY24</b>	<b>FY25</b>	<b>FY26</b>
	<b>Actual</b>	<b>Actual</b>	<b>Actual</b>	<b>Actual</b>	<b>Actual</b>	<b>Actual</b>	<b>Actual</b>	<b>Actual</b>	<b>Estimate</b>	<b>Estimate</b>
State Racing Fund	4,895	1,406	342	1,388	2,826	3,274	34,078	114,415	851,896	1,083,584
Horse Fair Racing Benefit Fund	-	-	-	-	-	-	-	-	-	-
Racing Investigative Expense Fund	-	-	-	-	-	-	-	-	-	-
Racing Reimbursable Expense Fund	-	-	-	-	-	-	-	-	-	-
Total	4,895	1,406	342	1,388	2,826	3,274	34,078	114,415	851,896	1,083,584

**Prior Year FY 2024**

In FY 2024 \$114,415 in salaries and wages were expended, primarily as the result of backgrounding and regulatory activities for the parimutuel facility in Sedgwick County and to maintain the Kansas Bred Registry.

**Current Year FY 2025**

The requested FTE for FY 2025 remains consistent with the approved FTE of 13.05 for the regulation of a historical horse racing machines at a parimutuel facility in Sedgwick county. The 13 FTE are funded for nine months of regulatory activities. KRGC has assumed a shrinkage of 7.5% which is about \$64,000.

**Budget Year FY 2026**

The requested number of FTE for the regulation of parimutuel activities remains consistent with the approved FTE for FY 2025 at 13.05 FTE for a full of regulation of a historical horse racing machines at a parimutuel facility in Sedgwick county. KRGC has assumed a shrinkage of 7.5% which is about \$80,000.

**Current Year FY 2025- Enhancement**

There are no salary and wages enhancements for the parimutuel program in the budget year.

**Budget Year FY 2026- Enhancement**

There are no salary and wages enhancements for the parimutuel program in FY 2026.

## NARRATIVE INFORMATION -- DA 400

DIVISION OF THE BUDGET  
STATE OF KANSAS

AGENCY NAME	Kansas Racing and Gaming Commission
AGENCY NUMBER	553
PROGRAM TITLE AND CODE	Parimutuel Gaming Program - 03900
SUBPROGRAM TITLE AND CODE	

### PARIMUTUEL GAMING PROGRAM

#### Contractual Service

State Racing Fund	FY17 Actual	FY18 Actual	FY19 Actual	FY20 Actual	FY21 Actual	FY22 Actual	FY23 Actual	FY24 Actual	FY25 Estimate	FY26 Estimate
Communication	-	-	-	-	-	-	-	-	10,000	10,000
Freight & Express	-	-	-	-	-	-	-	-	-	-
Printing & Advertising	-	-	-	-	-	-	-	-	-	-
Rents	308	-	268	-	-	-	-	24,740	20,500	20,500
Repairing & Servicing	-	-	-	-	-	-	-	-	-	-
Travel & Subsistence	-	-	-	-	-	-	5,746	18,432	40,000	40,000
Fees - Other Services	-	-	-	-	-	-	3,841	48	150,000	150,000
Fees - Professional Services	-	-	-	-	-	-	8,640	-	100,500	100,500
Other Contractual Services	-	-	-	-	-	-	190	-	-	-
Total Contractual Services	308	-	268	-	-	-	18,417	43,220	321,000	321,000

#### Prior Year FY 2024

In FY 2024 approximately \$43,000 in contractual services were expended, primarily as the result of regulatory activities for the parimutuel facility in Sedgwick County.

#### Current Year FY 2025

Funds are budgeted for racing records storage and to operate the Kansas Bred Registry Program for registration of horses and greyhounds and to regulate a parimutuel facility in Sedgwick County. Contractual expenditures for FY 2025 remain consistent with the approved FY 2025 budget at \$321,000 primarily for the regulation of historical horse racing machines at a parimutuel facility in Sedgwick County.

#### Budget Year FY 2026

Funds are budgeted for racing records storage and to operate the Kansas Bred Registry Program for registration of horses and greyhounds and to regulate a parimutuel facility in Sedgwick County. Contractual expenditures for FY 2026 remain consistent with the approved FY 2025 budget at \$321,000 primarily for the regulation of historical horse racing machines at a parimutuel facility in Sedgwick County.

#### Current Year FY 2026- Enhancement

There are no contractual expenditure enhancements for the parimutuel program in the budget year.

#### Budget Year FY 2026- Enhancement

There are no contractual expenditure enhancements for the parimutuel program in FY 2026.

**NARRATIVE INFORMATION -- DA 400**DIVISION OF THE BUDGET  
STATE OF KANSASAGENCY NAME  
AGENCY NUMBER  
PROGRAM TITLE AND CODE  
SUBPROGRAM TITLE AND CODEKansas Racing and Gaming Commission  
553  
Parimutuel Gaming Program - 03900**PARIMUTUEL GAMING PROGRAM****Commodities****State Racing Fund**

	<b>FY17</b>	<b>FY18</b>	<b>FY19</b>	<b>FY20</b>	<b>FY21</b>	<b>FY22</b>	<b>FY23</b>	<b>FY24</b>	<b>FY25</b>	<b>FY26</b>
	<b>Actual</b>	<b>Actual</b>	<b>Actual</b>	<b>Actual</b>	<b>Actual</b>	<b>Actual</b>	<b>Actual</b>	<b>Actual</b>	<b>Estimate</b>	<b>Estimate</b>
Animal Food	-	-	-	-	-	-	-	-	-	-
Food	-	-	-	-	-	-	-	2,854	-	-
Maintenance Material, Supplies, Parts	-	-	-	-	-	-	-	-	200	200
Motor Vehicle Parts, Supplies	-	-	-	-	-	-	108	315	8,000	8,000
Professional & Scientific Supplies	-	-	-	-	-	-	-	-	14,000	14,000
Stationary & Office Supplies	-	-	-	-	-	-	-	-	12,000	12,000
Other Supplies, Materials, Parts	-	-	-	-	-	-	-	-	1,400	1,400
Total Commodities	-	-	-	-	-	-	108	3,169	35,600	35,600

**Prior Year FY 2024**

In FY 2024 approximately \$3,200 were expended for commodities primarily for fuel related to agency vehicle travel related to parimutuel activities.

**Current Year FY 2025**

The request for commodities for parimutuel activity remains consistent with the approved FY 2025 budget at \$35,600 for the regulation of historical horse racing machines at a parimutuel facility in Sedgwick County.

**Budget Year FY 2026**

The request for commodities for parimutuel activity remains consistent with the approved FY 2026 budget at \$35,600 for the regulation of historical horse racing machines at a parimutuel facility in Sedgwick County.

**Current Year FY 2025- Enhancement**

There are no commodities expenditure enhancements for the parimutuel program in the budget year.

**Budget Year FY 2026- Enhancement**

There are no commodities expenditure enhancements for the parimutuel program in FY 2025.

**NARRATIVE INFORMATION -- DA 400**DIVISION OF THE BUDGET  
STATE OF KANSASAGENCY NAME  
AGENCY NUMBER  
PROGRAM TITLE AND CODE  
SUBPROGRAM TITLE AND CODEKansas Racing and Gaming Commission  
553  
Parimutuel Gaming Program - 03900**PARIMUTUEL GAMING PROGRAM****Capital Outlay****State Racing Fund**

	<b>FY17</b>	<b>FY18</b>	<b>FY19</b>	<b>FY20</b>	<b>FY21</b>	<b>FY22</b>	<b>FY23</b>	<b>FY24</b>	<b>FY25</b>	<b>FY26</b>
	<b>Actual</b>	<b>Actual</b>	<b>Actual</b>	<b>Actual</b>	<b>Actual</b>	<b>Actual</b>	<b>Actual</b>	<b>Actual</b>	<b>Estimate</b>	<b>Estimate</b>
Equipment, Machinery, Furniture and Fixtures	-	-	-	-	-	-	-	-	-	-
Books and Library Materials	-	-	-	-	-	-	-	-	-	-
Professional and Scientific Equipment	-	-	-	-	-	-	-	-	5,000	-
Microcomputer Systems and Support Equipment	-	-	-	-	-	-	-	-	30,000	25,000
Information Processing Equipment	-	-	-	-	-	-	-	-	60,000	10,000
Computer Systems, Info Processing or Micro Software	-	-	-	-	-	-	-	-	55,000	35,000
Other Equip Furniture/Fixtures	-	-	-	-	-	-	739	-	-	-
Passenger cars	-	-	-	-	-	-	-	-	-	-
Total Capital Outlay	-	-	-	-	-	-	739	-	150,000	70,000

**Prior Year FY 2024**

In FY 2024 no funds were expended for capital outlay.

**Current Year FY 2025**

KRGK is requesting approximately \$150,000 in expenditures for capital outlay in FY 2025 for the regulation of historical horse racing machines at a parimutuel facility in Sedgwick County.

**Budget Year FY 2026**

KRGK is requesting approximately \$70,000 in expenditures for capital outlay in FY 2026 for the regulation of historical horse racing machines at a parimutuel facility in Sedgwick County.

**Current Year FY 2025- Enhancement**

There are no capital outlay expenditure enhancements for the parimutuel program in the budget year.

**Budget Year FY 2026- Enhancement**

There are no capital outlay enhancements for the parimutuel program in FY 2025.

<div> <div>AGENCY NAME</div> <div>AGENCY NUMBER</div> <div>PROGRAM TITLE AND CODE</div> <div>SUBPROGRAM TITLE AND CODE</div> </div> <div> <div>Kansas Racing and Gaming Commission</div> <div>553      FUNCTION NO.      1</div> <div>Tribal Gaming Program - 03700</div> </div>
<p><b><u>TRIBAL GAMING PROGRAM</u></b></p> <p>The Tribal Gaming Program fulfills the duties and obligations of the state as set forth in the tribal-state gaming compacts and the Tribal Gaming Oversight Act. There are four Native American tribes in Kansas which have approved tribal-state gaming compacts which have been approved by the Kansas legislature, signed by the Governor, and approved by the Bureau of Indian Affairs. These four nations are: the Iowa Tribe of Kansas and Nebraska; the Kickapoo Tribe of Kansas; the Prairie Band Potawatomi Nation; and the Sac &amp; Fox Nation of Missouri in Kansas and Nebraska.</p> <p><b><u>PROGRAM'S STATUTORY HISTORY:</u></b></p> <p>K.S.A. 74-9801 through 74-9809 (a) mandate the agency shall be responsible for oversight, monitoring and compliance of class III gaming conducted pursuant to tribal-state compacts. It is the responsibility of the agency to monitor compliance with tribal-state gaming compacts and perform the duties of the state gaming agency as provided for in the tribal-state gaming compacts. The agency may examine and inspect all tribal gaming facilities and facilities linked to Kansas tribal gaming facilities for gaming, including but not limited to all machines and equipment used for tribal gaming, books, papers, records, electronic records, computer records or surveillance and security tapes and logs of any tribal gaming facility. The executive director may issue subpoenas. The agency can review all licensing and disciplinary actions and reports of noncompliance with the tribal-state compacts. Enforcement agents are vested with the power and authority of law enforcement officers.</p> <p><b><u>PROGRAM GOAL</u></b></p> <p>Ensure compliance with the four tribal-state compacts and the Tribal Gaming Oversight Act and that gaming is conducted in accordance with said compacts and applicable state and federal laws; protect the state of Kansas and its citizens from criminal activity in the tribal gaming arena; ensure accurate and complete information is provided to the different tribal gaming commissions for licensing purposes and to review all licensing decisions to ensure compliance; to conduct thorough background investigations on all gaming employees, management contractors, manufacturers and distributors of gaming devices seeking licensure at gaming facilities located in this state; investigate any alleged violations of the tribal-state compacts and the Tribal Gaming Oversight Act.</p> <p><b><u>OBJECTIVES:</u></b></p> <p>Prohibit undesirable employees, contractors, manufacturers, and distributors from obtaining licenses and/or access to casino facilities and activities.</p> <p>Ensure the provisions of the tribal-state gaming compacts, the Tribal Gaming Oversight Act, and the Indian Gaming Regulatory Act are met.</p>

<div> <div>AGENCY NAME</div> <div>AGENCY NUMBER</div> <div>PROGRAM TITLE AND CODE</div> <div>SUBPROGRAM TITLE AND CODE</div> </div> <div> <div>Kansas Racing and Gaming Commission</div> <div>553                      FUNCTION NO.                      1</div> <div>Tribal Gaming Program - 03700</div> </div>					
<b>TRIBAL GAMING PROGRAM</b>					
<b><u>OUTCOME MEASURES:</u></b>					
	<b>FY22</b>	<b>FY23</b>	<b>FY24</b>	<b>FY25</b>	<b>FY26</b>
	<b>Actuals</b>	<b>Actuals</b>	<b>Actuals</b>	<b>Estimate</b>	<b>Estimate</b>
Average days to complete background investigations	31	30	35	35	35
Average days to preliminary suitability	2	3	1.5	2	2
<b><u>STRATEGIES:</u></b>					
Conduct all category I and category II background investigations with employees of the Tribal Gaming Program.					
Conduct investigations and inspections of the gaming operations.					
Conduct training of tribal gaming personnel on gaming operations.					
<b><u>OUTPUT MEASURES:</u></b>					
	<b>FY22</b>	<b>FY23</b>	<b>FY24</b>	<b>FY25</b>	<b>FY26</b>
	<b>Actuals</b>	<b>Actuals</b>	<b>Actuals</b>	<b>Estimate</b>	<b>Estimate</b>
Number of background investigations.	411	467	448	450	450
Number of official slot machine inspections	339	303	372	350	350
Number of compliance inspections	190	180	177	180	180
Number of internal control inspections	1,874	1,603	347	1,500	1,500

**NARRATIVE INFORMATION -- DA 400**DIVISION OF THE BUDGET  
STATE OF KANSASAGENCY NAME  
AGENCY NUMBER  
PROGRAM TITLE AND CODE  
SUBPROGRAM TITLE AND CODEKansas Racing and Gaming Commission  
553  
Tribal Gaming Program - 03700

FUNCTION NO. 1

**TRIBAL GAMING PROGRAM****Salaries and Wages**

<b>Tribal Gaming Fund</b>	<b>FY 22</b>	<b>FY 23</b>	<b>FY 24</b>	<b>FY 25</b>	<b>FY 26</b>
	<b>Actuals</b>	<b>Actuals</b>	<b>Actuals</b>	<b>Estimate</b>	<b>Estimate</b>
	986,697	1,014,179	1,015,349	1,138,654	1,149,639
Assumed Shrinkage				(20,000)	(20,000)
Net Salaries and Wages				1,118,654	1,129,639

The Tribal Gaming Program funding request will be used to finance 15 FTE positions for FY 25 & FY 26.

The Tribal Gaming Program will be performing all the background investigations necessary for category I and category II employees, contractors, manufacturers, and distributors.

**Current Year FY 2025**

Salaries and wages for the current year remain unchanged from the FY 25 legislative approved budgeted amount.

The Kansas State Gaming Agency has assumed a shrinkage amount of \$20,000, which equals a shrinkage rate of approximately 1.76%.

**Budget Year FY 2026**

Salaries and wages for the budget years are to provide for a consistent level of employment.

The Kansas State Gaming Agency will assume a shrinkage amount of \$20,000, which equals a shrinkage rate of approximately 1.74%.

**Enhancement**

There are no salary and wage enhancements for the Tribal Gaming Program in the budget year.

**NARRATIVE INFORMATION -- DA 400**DIVISION OF THE BUDGET  
STATE OF KANSASAGENCY NAME  
AGENCY NUMBER  
PROGRAM TITLE AND CODE  
SUBPROGRAM TITLE AND CODEKansas Racing and Gaming Commission  
553  
Tribal Gaming Program - 03700

FUNCTION NO. 1

**TRIBAL GAMING PROGRAM****Contractual Services****Tribal Gaming Fund**

	<b>FY 23</b>	<b>FY 24</b>	<b>FY 25</b>	<b>FY 26</b>
	<b>Actuals</b>	<b>Actuals</b>	<b>Estimate</b>	<b>Estimate</b>
Communication	38,244	37,878	80,100	80,100
Freight & Express	39	-	100	100
Printing & Advertising	24	24	100	100
Rents	91,673	93,616	95,330	95,330
Repairing & Servicing	34,426	17,544	26,800	26,800
Travel & Subsistence	13,045	9,603	20,750	20,750
Fees - Record Checks, Building Surcharge	44,727	43,459	51,500	51,500
Fees - Other Services	23,360	29,662	36,550	36,550
Fees - Professional Services	-	-	500	500
Other Contractual Services	3,071	3,122	3,700	3,700
Official Hospitality	55	48	1,000	1,000
Total Contractual Services	<u>248,664</u>	<u>234,956</u>	<u>316,430</u>	<u>316,430</u>

**Prior Year FY 2024**

During FY 2024 Contractual Services were approximately 15.2% below the legislative approved budget. The tribes are given a credit for the amounts below the budget to the current year's assessments.

**Current Year FY 2025**

In the current year, the contractual service budget remains consistent with the FY 2025 legislative approved budgeted amount.

**Budget Year FY 2026**

In the budget year FY 2026, the contractual services budget remains consistent with the current year budget.

NOTE: The Tribal Gaming Program requests to continue the Hospitality Fund in the amount of \$1,000 for purpose of hosting meetings.

**Enhancement**

There are no contractual service enhancements for the Tribal Gaming Program in the budget year.



**NARRATIVE INFORMATION -- DA 400**

DIVISION OF THE BUDGET  
STATE OF KANSAS

AGENCY NAME  
AGENCY NUMBER  
PROGRAM TITLE AND CODE  
SUBPROGRAM TITLE AND CODE

Kansas Racing and Gaming Commission  
553      FUNCTION NO.  
Tribal Gaming Program - 03700

1

**Commodities****Tribal Gaming Fund**

	<b>FY23</b>	<b>FY24</b>	<b>FY25</b>	<b>FY26</b>
	<b>Actuals</b>	<b>Actuals</b>	<b>Estimate</b>	<b>Estimate</b>
Maintenance Materials, Supplies, Parts	920	245	1,750	1,750
Motor Vehicle Parts, Supplies	5,684	5,218	10,500	10,500
Professional & Scientific Supplies	-	113	500	500
Stationary & Office Supplies	3,520	998	3,000	3,000
Other Supplies, Materials, Parts	2,014	8,073	4,500	4,500
Total Commodities	12,138	14,647	20,250	20,250

**Prior Year FY 2024**

In FY 2024, Commodities were approximately 43.33% below the legislative approved budget. The tribes are given a credit for the amounts below the budget to the current year's assessments.

**Current Year FY 2025**

In the current year, the commodities budget remains consistent with the FY 2025 legislative approved budgeted amount.

**Budget Year FY 2026**

In the budget year FY 2026, the commodities budget remains consistent with the current year budget. Anticipated expenses were obtained through use of historical data, expected variations, and executive direction.

**Enhancement**

There are no commodities enhancements for the Tribal Gaming Program in the budget year.

**NARRATIVE INFORMATION -- DA 400**DIVISION OF THE BUDGET  
STATE OF KANSASAGENCY NAME  
AGENCY NUMBER  
PROGRAM TITLE AND CODE  
SUBPROGRAM TITLE AND CODEKansas Racing and Gaming Commission  
553      FUNCTION NO.      1  
Tribal Gaming Program - 03700**TRIBAL GAMING PROGRAM****Capital Outlay****Tribal Gaming Fund**

	<b>FY23</b>	<b>FY24</b>	<b>FY25</b>	<b>FY26</b>
	<b>Actuals</b>	<b>Actuals</b>	<b>Estimate</b>	<b>Estimate</b>
Vehicles	-	-	-	-
Equipment, Machinery, Furniture and Fixtures	-	-	1,500	1,500
Professional and Scientific Equipment	-	2,279	-	-
Books and Library Materials	-	-	-	-
Microcomputer Systems and Support Equipment	7,339	30,895	11,300	11,300
Information Processing Equipment	-	-	18,500	18,500
Computer Systems, Info Processing or Micro Software	542	274	2,500	2,500
Buildings & Improvements	-	-	-	-
Telecommunications/ Data Facilities	-	-	-	-
	<u>7,881</u>	<u>33,448</u>	<u>33,800</u>	<u>33,800</u>

**Prior Year FY 2024**

In the prior year, capital outlay was approximately 13.96% above the approved legislative budgeted amount.

**Current Year FY 2025**

In the current year, the capital outlay budget remains consistent with the FY 2024 legislative approved budgeted amount.

**Budget Year FY 2026**

In the budget year FY 2026, the capital outlay budget remains consistent with the current year budget.

Anticipated expenses were obtained through use of historical data, expected variations and executive direction.

<b>NARRATIVE INFORMATION -- DA 400</b>	AGENCY NAME Kansas Racing and Gaming Commission
DIVISION OF THE BUDGET STATE OF KANSAS	AGENCY NUMBER 553 PROGRAM TITLE AND CODE Expanded Gaming Regulation - 03800 SUBPROGRAM TITLE AND CODE
<p><b>EXPANDED LOTTERY ACT REGULATION PROGRAM (GAMING)</b></p> <p>The KRGC provides regulatory oversight of lottery and racetrack gaming facility managers and their operations in Kansas. Currently, no racetrack gaming facility managers are licensed in Kansas.</p> <p><b><u>PROGRAM'S STATUTORY HISTORY:</u></b></p> <p>Under KELA, the State of Kansas is authorized to contract with entities to operate casino-style games owned by the Kansas Lottery Commission. KELA established four gaming zones where lottery gaming facilities could be located and exclusively operated. Additionally, KELA provided that the Kansas Lottery Commission was authorized to contract with racetrack gaming facility managers in three of the four gaming zones to operate slots machines at pari-mutuel facilities.</p> <p>K.S.A. 74-8772 requires the KRGC to establish and enforce rules and regulations that include but are not limited to: 1) promoting the integrity of gaming and the finances of gaming activity in Kansas that meet or exceed industry standards for monitoring and controlling lottery and racetrack gaming facility managers; 2) prescribing the on-site security at lottery and racetrack gaming facility enterprises in Kansas; 3) reporting of information concerning lottery and racetrack facility managers, their employees, vendors and vendor finances necessary or desirable to ensure the security of lottery or racetrack gaming facility operations; and 4) reporting and auditing of the financial information of lottery or racetrack gaming facility managers, and other information the KRGC requires to determine compliance with KELA and KRGC rules and regulations. KRGC rules and regulations shall include but not be limited to oversight provisions related to: 1) internal controls; 2) security of facilities; 3) performance of background investigations; 4) determination of qualifications and credentialing of employees, contractors and agents of lottery or racetrack gaming facility managers, ancillary lottery gaming facility operations and racetrack gaming facilities; 5) auditing of lottery gaming facility revenue and racetrack gaming facility slot machine income; 6) enforcement of all state laws; and 7) maintaining of the integrity of lottery and racetrack gaming facility operations.</p> <p>K.S.A. 74-8769 requires that each person subject to a background check under KELA shall be subject to a state and national criminal history records check that conforms to federal standards for the purpose of verifying an applicant's identity and determining whether the applicant has been convicted of any crime that would disqualify the applicant from engaging in activities at lottery or racetrack gaming facilities or ancillary lottery gaming facilities.</p> <p>K.S.A. 74-8710(a)(13)(B) states that the Kansas Lottery Commission must issue rules and regulations to enforce management contract provisions that require lottery and racetrack gaming facility managers to provide a program to alleviate problem gambling including a requirement that each lottery and racetrack gaming facility maintain a self-exclusion list by which individuals may exclude themselves from access to slots machines and other lottery facility games. Under K.S.A. 74-8772, the KRGC issues rules and regulations to provide regulatory oversight of these management contract provisions that include responsible gambling and voluntary exclusion programs.</p> <p>K.S.A. 74-8750(c) requires the KRGC to collect from any manufacturer, supplier, provider, lottery gaming facility manager, racetrack gaming facility manager or other person the anticipated actual costs in advance for the examination and certification of electronic gaming machines or lottery facility games. KRGC will reimburse any overpayment and collect any under payment from the appropriate vendor.</p>	

## NARRATIVE INFORMATION -- DA 400

DIVISION OF THE BUDGET  
STATE OF KANSAS

AGENCY NAME Kansas Racing and Gaming Commission  
AGENCY NUMBER 553  
PROGRAM TITLE AND CODE Expanded Gaming Regulation - 03800  
SUBPROGRAM TITLE AND CODE

### EXPANDED LOTTERY ACT REGULATION PROGRAM (GAMING)

#### Key Performance Measures

	Actual FY 2019	Actual FY 2020	Actual FY 2021	Actual FY 2022	Actual FY 2023	Actual FY 2024	Estimate FY 2025	Estimate FY 2026
Number of background investigations completed (individual & corporate)	1,123	927	606	1,247	1,270	1,205	1,270	1,270
Percentage of employee licenses denied by the Commission	1%	1%	1%	1%	1%	1%	2%	2%
Number of initial EGM inspections/certifications	791	375	108	204	504	640	700	700
Number of Criminal Case Reports	486	409	457	340	258	289	550	550
Illegal gaming machines seized (# does not include components, prizes and other related items seized)	47	39	6	10	43	27	60	60
Illegal gambling complaints received	176	143	145	121	104	115	220	220
Local criminal prosecutions initiated with KRGC assistance*	1	0	0	5	0	4	25	25
Number of VEP enrollees granted access to lottery gaming facility	85	86	99	80	58	74	71	71
Number of new Voluntary Exclusion Program enrollments	289	200	174	172	192	499	300	300

\* Includes prosecutions where KRGC was appointed special counsel to prosecute as well as those where KRGC provided education, guidance, technical expertise, etc. to county or district attorneys that resulted in initiation of prosecutions. KRGC performs forensics for outside law enforcement agencies throughout the state, resulting in forfeitures and prosecutions that are not always disclosed to KRGC staff. KRGC does not have prosecution authority and it is unknown whether county and district attorneys initiated criminal cases based on KRGC efforts.

## NARRATIVE INFORMATION -- DA 400

DIVISION OF THE BUDGET  
STATE OF KANSAS

AGENCY NAME	Kansas Racing and Gaming Commission
AGENCY NUMBER	553
PROGRAM TITLE AND CODE	Expanded Gaming Regulation - 03800
SUBPROGRAM TITLE AND CODE	Gaming Regulation

### EXPANDED LOTTERY ACT REGULATION PROGRAM (GAMING)

#### *Subprogram Gaming Regulation*

#### Purpose:

Uphold and promote the integrity of gaming at lottery and racetrack gaming facilities. Ensure the state of Kansas is receiving its fair share of gaming revenue and patrons are receiving the gaming experience according to state law. Ensure compliance with KRGC rules and regulations and applicable state and federal laws.

**Required By Statute:** Yes.

**Maintenance of Effort or Matching Requirement:** None.

**Statutory Requirements:** K.S.A. 74-8733 through 74-8773.

**Consequences of Not Funding:** Without this program there would be no regulatory oversight of gaming ownership and operations in Kansas Casinos. There would be no protection for Kansas citizens from the nefarious influences of the criminal element that had such a large impact on the early years of gaming in the United States.

### PROGRAM GOALS - INTEGRITY OF GAMING

Uphold and promote the integrity of gaming at lottery and racetrack gaming facilities.

Protect gaming operations from the influence of individuals or entities seeking to harm the integrity of gaming in Kansas.

Protect the state of Kansas and its citizens from criminal activity and other potential issues related to the operation of lottery and racetrack gaming facilities.

#### Objectives

Conduct timely and thorough background investigations on all gaming licensees required by KELA.

Investigate complaints and alleged violations of the KRGC rules and regulations and state law related to the lottery and racetrack gaming facilities.

Prohibit ineligible applicants from obtaining licenses and access to casino facilities and activities.

#### OUTCOME MEASURE:

	Actual FY 2019	Actual FY 2020	Actual FY 2021	Actual FY 2022	Actual FY 2023	Actual FY 2024	Estimate FY 2025	Estimate FY 2026
Corporate Background Completion %	136%	150%	100%	134%	117%	116%	95%	95%
Individual Background Completion %	69%	91%	67%	91%	129%	87%	95%	95%
% of Employee Applicants Denied Temporary Permits	3%	2%	2%	5%	4%	1%	5%	5%
% Employee Licenses Denied by Commission	1%	1%	0.5%	1%	1%	1%	2%	2%
Licenses revoked because of previously undiscovered information	0%	0%	0%	0%	0%	0%	0%	0%

#### OUTPUT MEASURES:

Corporate Background Investigations:	Completed	16	6	0	7	41	25	20	20
	Pending/In-Process	35	63	77	59	33	13	20	20
	Updates/Renewals	18	26	23	36	23	34	20	20
Individual Background Investigations:	Completed	1,107	921	606	1,240	1,229	1,180	1,250	1,250
	Pending/In-Process	987	686	798	571	545	607	750	750
	Updates/Renewals	1,037	1,031	994	1,022	977	989	1,250	1,250
Vendor Licenses:	Approved	15	6	0	7	41	25	15	15
	Temporary	6	2	10	2	32	4	10	10
	Renewals	18	26	23	36	23	34	20	20
Casino Employee Licenses:	Gaming Licenses Approved	691	635	385	755	695	694	800	800
	Gaming Licenses Denied	16	18	6	22	19	29	20	20
	Temporary Work Permits Issues	837	555	637	909	700	796	800	800
	License Renewals	704	695	667	512	575	575	750	750
Criminal Case Reports		486	409	457	340	258	289	550	550

# NARRATIVE INFORMATION -- DA 400

DIVISION OF THE BUDGET  
STATE OF KANSAS

AGENCY NAME  
AGENCY NUMBER  
PROGRAM TITLE AND CODE  
SUBPROGRAM TITLE

Kansas Racing and Gaming Commission  
553  
Expanded Gaming Regulation - 03800  
Gaming Regulation

## EXPANDED LOTTERY ACT REGULATION PROGRAM (GAMING)

*Subprogram Gaming Regulation Continued*

### PROGRAM GOALS - ACCOUNTABILITY & COMPLIANCE

Uphold and promote the integrity of gaming at lottery and racetrack gaming facilities.

Ensure the state of Kansas is receiving its fair share of gaming revenue and patrons are receiving the gaming experience according to state law.

Ensure compliance with KRGC rules and regulations and applicable state and federal laws.

### Objectives

Certify all electronic gaming machines (EGM) and systems that will be used at lottery and racetrack gaming facilities in the State of Kansas.

Audit the collection of net gaming revenue.

Collect and analyze daily information on bets, wins, tickets, jackpots and drops from slots and daily table game totals.

Audit net gaming revenue by analyzing daily billings from the Lottery's central computer system and comparing it to each casino's management system.

Analyze reports on jackpot tax reporting, comps, e-promo's and customer deposits.

Audit the internal controls and procedures of each lottery gaming facility to ensure compliance with regulations and standards for operations.

Investigate complaints and alleged violations of the KRGC rules and regulations and applicable state and federal laws.

### OUTCOME MEASURES:

	Actual FY 2019	Actual FY 2020	Actual FY 2021	Actual FY 2022	Actual FY 2023	Actual FY 2024	Estimate FY 2025	Estimate FY 2026
Improper gaming outcome discovered after complaint	0	0	0	0	0	0	0	0
Improper payment to the state discovered after audit	0	0	0	0	0	0	0	0
Casino internal audits completed within allotted time	100%	100%	100%	100%	100%	100%	100%	100%
Customer Complaints Investigated	100%	100%	100%	100%	100%	100%	100%	100%
KRGC Responses to Customer Complaints	100%	100%	100%	100%	100%	100%	100%	100%

### OUTPUT MEASURES:

EGM Disputes Investigated	17	17	14	10	6	8	15	15
Machine Software Inspections	1,913	2,280	1,721	4,201	4,566	4,123	5,000	5,000
Initial EGM Inspections/Certifications	791	375	108	204	504	640	700	700
EGM Hardware/Software Components Tested and Approved	2,634	2,683	1,706	1,626	2,177	3,237	3,600	3,600
Table Games Tested and Approved	27	3	2	1			5	5
Internal Control Plans Approved	0	0	0	0	0	0	0	0
Internal Control Plan Amendments Reviewed	77	60	46	68	58	65	65	65
Internal Control Plan Amendments Approved	66	55	34	56	36	32	55	55
Investigations of Variances/Findings found in Audits	0	2	0	0	0	0	1	1
Security Plans Approved	0	0	0	0	0	0	0	0
Security Plan Amendments Reviewed	1	2	2	9	2	2	2	2
Security Plan Amendments Approved	2	2	2	6	0	1	2	2
Non-Criminal Incident Reports	492	807	1,218	525	340	353	500	500
Official Customer Complaints Received	10	14	27	8	85	78	51	41

# NARRATIVE INFORMATION -- DA 400

DIVISION OF THE BUDGET  
STATE OF KANSAS

AGENCY NAME	Kansas Racing and Gaming Commission
AGENCY NUMBER	553
PROGRAM TITLE AND CODE	Expanded Gaming Regulation - 03800
SUBPROGRAM TITLE AND CODE	Illegal Gaming

## EXPANDED LOTTERY ACT REGULATION PROGRAM (GAMING) *Subprogram Illegal Gaming*

### Purpose:

Protect the state of Kansas and its citizens from unregulated gaming.

**Required By Statute:** Yes.

**Maintenance of Effort or Matching Requirement:** None.

**Statutory Requirements:** 74-8750(b)&(d); 74-8772(e); Appropriations language establishes the illegal gambling fund for machines seized through enforcement by KRGK.

**Consequences of Not Funding:** Failure to fund could result in the proliferation of gaming that is corrupt. It can also impact the gaming revenue the State receives.

### PROGRAM GOAL - ILLEGAL GAMING ENFORCEMENT

Coordinate with state agencies and local authorities to reduce and minimize illegal gaming in Kansas.

### Objectives

Respond to inquiries and educate the public about illegal gambling.

Seek voluntary compliance from any business or individual in the state against whom there is an illegal gambling complaint.

Remove illegal gambling devices from public use through civil seizure and forfeiture when voluntary compliance is not possible.

Coordinate with local authorities to litigate issues that cannot be achieved through voluntary compliance or civil seizure.

	Actual FY 2019	Actual FY 2020	Actual FY 2021	Actual FY 2022	Actual FY 2023	Actual FY 2024	Estimate FY 2025	Estimate FY 2026
<b><u>OUTPUT MEASURES:</u></b>								
Illegal gaming machines seized (# does not include components, prizes and other related items seized)	47	39	6	10	43	27	60	60
Illegal gambling complaints received	176	143	145	121	104	115	220	220
Local criminal prosecutions initiated with KRGK assistance*	1	0	0	5	0	4	25	25
The number of investigations related to criminal activity as stipulated in K.S.A. § 74-8792(a)	0	0	0	0	0	25	100	100

\* Includes prosecutions where KRGK was appointed special counsel to prosecute as well as those where KRGK provided education, guidance, technical expertise, etc. to county or district attorneys that resulted in initiation of prosecutions. KRGK performs forensics for outside law enforcement agencies throughout the state, resulting in forfeitures and prosecutions that are not always disclosed to KRGK staff. KRGK does not have prosecution authority and it is unknown whether county and district attorneys initiated criminal cases based on KRGK efforts.

## NARRATIVE INFORMATION -- DA 400

DIVISION OF THE BUDGET  
STATE OF KANSAS

AGENCY NAME	Kansas Racing and Gaming Commission
AGENCY NUMBER	553
PROGRAM TITLE AND CODE	Expanded Gaming Regulation - 03800
SUBPROGRAM TITLE AND CODE	Responsible Gaming

### EXPANDED LOTTERY ACT REGULATION PROGRAM (GAMING) *Subprogram Responsible Gaming*

#### Purpose:

Facilitate responsible gaming in the State of Kansas by administering the voluntary exclusion program.

**Required By Statute:** Yes.

**Maintenance of Effort or Matching Requirement:** None.

**Statutory Requirements:** K.S.A. 74-8733 through 74-8773.

**Consequences of Not Funding:** There would be no voluntary exclusion program for problem gamblers to sign up for and there would no longer be a state-wide mechanism to prevent problem gamblers from legally entering a State-owned casino.

### PROGRAM GOAL - RESPONSIBLE GAMBLING

Promote responsible gambling in the state of Kansas.

#### Objectives

Administer the Voluntary Exclusion Program (VEP).

Audit and approve each lottery gaming facility's responsible gambling plan for KRGC regulatory compliance.

Ensure all lottery gaming facility advertising satisfies KRGC regulations.

#### OUTCOME MEASURE:

Number of VEP enrollees granted access to lottery gaming facility

Actual FY 2019	Actual FY 2020	Actual FY 2021	Actual FY 2022	Actual FY 2023	Actual FY 2024	Estimate FY 2025	Estimate FY 2026
-------------------	-------------------	-------------------	-------------------	-------------------	-------------------	---------------------	---------------------

85	86	99	80	58	74	71	71
----	----	----	----	----	----	----	----

Number of audit deficiencies of lottery gaming facility's responsible gambling plan (initiated FY 2013)

0	0	0	0	0	0	0	0
---	---	---	---	---	---	---	---

Number of problem gambling helpline calls reporting lottery gaming facility as source (% of total)

15%	14%	11%	37%	23%	42%	33%	30%
-----	-----	-----	-----	-----	-----	-----	-----

#### OUTPUT MEASURES:

Number of new Voluntary Exclusion Program enrollments

289	200	174	172	192	499	300	300
-----	-----	-----	-----	-----	-----	-----	-----



## NARRATIVE INFORMATION -- DA 400

DIVISION OF THE BUDGET  
STATE OF KANSAS

AGENCY NAME Kansas Racing and Gaming Commission  
AGENCY NUMBER 553  
PROGRAM TITLE AND CODE Expanded Gaming Regulation - 03800  
SUBPROGRAM TITLE AND CODE

### EXPANDED GAMING REGULATION PROGRAM

#### Salaries and Wages

	FY16 Actual	FY17 Actual	FY18 Actual	FY19 Actual	FY20 Actual	FY21 Actual	FY22 Actual	FY23 Actual	FY24 Actual	FY25 Estimate	FY26 Estimate
<b><i>Gaming Regulation Sub-Program - 03861</i></b>											
Expanded Lottery Act Regulation Fund	3,987,843	4,425,473	4,784,630	4,960,509	5,151,087	5,128,709	5,369,133	5,961,686	6,334,729	7,519,725	7,575,667
Gaming Background Investigations Fund	205,429	167,533	170,982	201,735	179,014	261,078	338,903	331,836	303,628	350,790	354,966
<b>Subtotal Salaries and Wages - 03861</b>	<b>4,193,272</b>	<b>4,593,006</b>	<b>4,955,612</b>	<b>5,162,244</b>	<b>5,330,101</b>	<b>5,389,787</b>	<b>5,708,036</b>	<b>6,293,522</b>	<b>6,638,357</b>	<b>7,870,515</b>	<b>7,930,633</b>
<b><i>Responsible Gaming Sub-Program - 03862</i></b>											
Expanded Lottery Act Regulation Fund	-	-	2,031	39,597	30,882	29,162	35,562	35,934	49,871	30,442	30,783
Gaming Background Investigations Fund	-	-	-	-	-	-	-	-	-	-	-
<b>Subtotal Salaries and Wages - 03862</b>	<b>-</b>	<b>-</b>	<b>2,031</b>	<b>39,597</b>	<b>30,882</b>	<b>29,162</b>	<b>35,562</b>	<b>35,934</b>	<b>49,871</b>	<b>30,442</b>	<b>30,783</b>
<b><i>Illegal Gaming Sub-Program - 03863</i></b>											
Expanded Lottery Act Regulation Fund	-	81,429	81,429	76,611	82,557	57,305	51,715	89,912	274,167	657,777	681,585
Gaming Background Investigations Fund	-	-	-	-	-	-	-	-	-	-	-
<b>Subtotal Salaries and Wages - 03863</b>	<b>-</b>	<b>81,429</b>	<b>81,429</b>	<b>76,611</b>	<b>82,557</b>	<b>57,305</b>	<b>51,715</b>	<b>89,912</b>	<b>274,167</b>	<b>657,777</b>	<b>681,585</b>
<b><i>Expanded Gaming Regulation Program Total</i></b>											
Expanded Lottery Act Regulation Fund	3,987,843	4,506,902	4,868,090	5,076,717	5,264,526	5,215,176	5,456,410	6,087,532	6,658,767	8,207,944	8,288,035
Gaming Background Investigations Fund	205,429	167,533	170,982	201,735	179,014	261,078	338,903	331,836	303,628	350,790	354,966
<b>Total Salaries and Wages - Expanded Gaming Regulation Program</b>	<b>4,193,272</b>	<b>4,674,435</b>	<b>5,039,072</b>	<b>5,278,452</b>	<b>5,443,540</b>	<b>5,476,254</b>	<b>5,795,313</b>	<b>6,419,368</b>	<b>6,962,395</b>	<b>8,558,734</b>	<b>8,643,001</b>

#### Prior Year -FY 2024

Salaries for the prior year were for the KRGK's employees at the central office in Topeka, the Boot Hill Casino in Dodge City, the Kansas Star Casino in Mulvane, the Hollywood Casino at the Kansas Speedway in Wyandotte county, and the Kansas Crossing Casino in Crawford county. The KRGK had an approved FTE limit of 92.5. The FTEs consist of 11 regular classified positions and 81.5 regular unclassified positions. In addition, KRGK has 5 commissioners which are non-FTE temporary unclassified.

#### Current Year FY 2025

Salaries and wages for FY 2025 are for the KRGK employees that regulate gaming from the central office in Topeka, the Boot Hill Casino, the Kansas Star Casino, the Hollywood Casino, and the Kansas Crossing Casino. The KRGK has an approved FTE limit of 92.5 FTE positions for FY 2025. In addition, the KRGK funds a 0.5 temporary unclassified position, 5 KRGK Commissioners in the temporary unclassified service. The revised FTE for FY 2025 is unchanged from the approved FY 2025 budget. KRGK has assumed a shrinkage of 7.5% which is about \$600,000.

#### Budget Year FY 2026

Salaries and wages for FY 2026 are for the KRGK employees that regulate gaming from the central office in Topeka, the Boot Hill Casino, the Kansas Star Casino, the Hollywood Casino, and the Kansas Crossing Casino. The KRGK has an approved FTE limit of 92.5 FTE positions for FY 2025. In addition, the KRGK funds a 0.5 temporary unclassified position, 5 KRGK Commissioners in the temporary unclassified service. KRGK's the requested FTE is unchanged from the approved FY 2025 budget. KRGK has assumed a shrinkage of 7.5% which is about \$650,000.

#### Current Year FY 2025- Supplemental

There is no supplemental package for FY 2025.

#### Budget Year FY 2026- Supplemental

There is no supplemental package for FY 2026.

NARRATIVE INFORMATION -- DA 400										
										Kansas Racing and Gaming Commission
DIVISION OF THE BUDGET										553
STATE OF KANSAS										Expanded Gaming Regulation - 03800
EXPANDED GAMING REGULATION PROGRAM										
<u>Contractual Services</u>										
<b>Contractual Services by Sub-Program</b>										
	FY17	FY18	FY19	FY20	FY21	FY22	FY23	FY24	FY25	FY26
	Actual	Actual	Actual	Actual	Actual	Actual	Actual	Actual	Estimate	Estimate
<i>Gaming Regulation Sub-Program - 03861</i>										
<b>Expanded Lottery Act Reg Fund - 2535</b>										
Communication	93,861	79,494	62,571	64,043	80,408	81,224	66,332	62,762	85,200	85,200
Freight & Express	1,407	4,490	4,008	3,488	2,963	2,968	3,378	3,985	1,300	1,300
Printing & Advertising	-	-	45	842	46	131	1,489	3,368	1,450	1,450
Rents	208,953	215,597	232,254	223,794	227,867	227,045	230,156	241,639	260,650	260,650
Repairing & Servicing	49,537	20,846	20,901	109,664	15,242	14,219	18,275	25,043	55,708	55,708
Travel & Subsistence	121,777	89,902	67,729	75,366	38,344	57,843	79,439	86,573	151,634	151,634
Fees - Other Services	312,416	350,094	349,065	247,461	269,938	339,163	364,823	317,052	346,940	346,940
Fees - Professional Services	6,614	28,743	51,841	69,247	40,041	38,949	7,774	18,504	282,050	282,050
Other Contractual Services	4,820	4,123	2,675	3,026	7,981	8,383	10,699	6,754	19,043	19,043
<i>Subtotal - Cont. Services - ELARF</i>	<i>799,385</i>	<i>795,289</i>	<i>791,089</i>	<i>796,931</i>	<i>682,830</i>	<i>769,925</i>	<i>782,565</i>	<i>765,680</i>	<i>1,203,975</i>	<i>1,203,975</i>
<b>Gaming Background Investigations Fund - 2682</b>										
Communication	-	-	-	-	-	-	-	-	-	-
Freight & Express	-	-	-	-	-	-	-	-	-	-
Printing & Advertising	-	-	-	-	-	-	-	-	-	-
Rents	-	-	-	-	-	-	-	-	-	-
Repairing & Servicing	-	-	-	-	-	-	-	-	-	-
Travel & Subsistence	9,645	12,996	14,377	6,019	-	6,562	7,885	15,975	35,250	35,250
Fees - Other Service	-	5	321	142	-	-	-	1,255	-	-
Fees - Professional Service	-	-	-	-	-	-	-	134	-	-
Other Contractual Services	-	-	-	-	-	-	-	-	-	-
<i>Subtotal - Cont. Services - Gaming Background Invest. Fund</i>	<i>9,645</i>	<i>13,001</i>	<i>14,698</i>	<i>6,161</i>	<i>-</i>	<i>6,562</i>	<i>7,885</i>	<i>17,364</i>	<i>35,250</i>	<i>35,250</i>
<b>Illegal Gambling Enforcement Fund - 2734</b>										
Communication	-	-	-	-	-	-	-	-	-	-
Freight & Express	-	-	-	-	-	-	-	-	-	-
Printing & Advertising	-	-	-	-	-	-	-	-	-	-
Rents	-	-	-	-	-	-	-	-	-	-
Repairing & Servicing	-	-	-	-	-	-	-	-	-	-
Travel & Subsistence	-	-	-	-	-	-	-	-	-	-
Fees - Other Services	-	-	-	-	-	-	-	-	-	-
Fees - Professional Services	-	-	-	-	-	-	-	-	-	-
Other Contractual Services	-	-	-	-	-	-	-	-	-	-
<i>Subtotal - Cont. Services - Illegal Gambling Enforcement Fund</i>	<i>-</i>	<i>-</i>	<i>-</i>	<i>-</i>	<i>-</i>	<i>-</i>	<i>-</i>	<i>-</i>	<i>-</i>	<i>-</i>
<b>Subtotal - Cont. Services - Gaming Regulation 03861</b>	<b>809,030</b>	<b>806,290</b>	<b>805,787</b>	<b>803,092</b>	<b>682,830</b>	<b>776,487</b>	<b>790,250</b>	<b>783,044</b>	<b>1,239,225</b>	<b>1,239,225</b>
<i>Responsible Gaming Sub-Program - 03862</i>										
<b>Expanded Lottery Act Regulation Fund - 2535</b>										
<i>Subtotal - Cont. Services - ELARF</i>	<i>-</i>	<i>-</i>	<i>-</i>	<i>-</i>	<i>-</i>	<i>-</i>	<i>-</i>	<i>106</i>	<i>-</i>	<i>-</i>
<b>Gaming Background Investigations Fund</b>										
<i>Subtotal - Cont. Services - Gaming Background Invest. Fund</i>	<i>-</i>	<i>-</i>	<i>-</i>	<i>-</i>	<i>-</i>	<i>-</i>	<i>-</i>	<i>-</i>	<i>-</i>	<i>-</i>
<b>Illegal Gambling Enforcement Fund - 2734</b>										
<i>Subtotal - Cont. Services - Illegal Gambling Enforcement Fund</i>	<i>-</i>	<i>-</i>	<i>-</i>	<i>-</i>	<i>-</i>	<i>-</i>	<i>-</i>	<i>-</i>	<i>-</i>	<i>-</i>
<b>Subtotal Cont. Services - Responsible Gaming 03862</b>	<b>-</b>	<b>-</b>	<b>-</b>	<b>-</b>	<b>-</b>	<b>-</b>	<b>-</b>	<b>106</b>	<b>-</b>	<b>-</b>
<i>Illegal Gaming Sub-Program - 03863</i>										
<b>Expanded Lottery Act Reg Fund - 2535</b>										
Communication	-	-	-	-	-	-	-	34	20,000	20,000
Freight & Express	-	-	-	-	-	-	-	45	-	-
Printing & Advertising	-	-	-	-	-	-	-	-	-	-
Rents	-	-	-	200	-	-	-	-	-	-
Repairing & Servicing	-	-	-	-	47	-	92	-	-	-
Travel & Subsistence	-	150	198	477	1,194	1,421	3,665	6,794	25,000	25,000
Fees - Other Services	-	-	15	-	-	-	550	350	20,000	20,000
Fees - Professional Services	-	-	-	-	-	-	-	-	50,000	50,000
Other Contractual Services	-	-	-	-	-	-	-	383	-	-
<i>Subtotal - Cont. Services - ELARF</i>	<i>-</i>	<i>150</i>	<i>213</i>	<i>677</i>	<i>1,241</i>	<i>1,421</i>	<i>4,307</i>	<i>7,606</i>	<i>115,000</i>	<i>115,000</i>
<b>Illegal Gambling Enforcement Fund - 2734</b>										
Communication	-	-	240	-	-	-	-	-	-	-
Freight & Express	-	-	-	-	-	-	-	20	-	-
Printing & Advertising	-	-	-	-	-	-	-	-	-	-
Rents	178	-	-	780	-	-	-	-	-	-
Repairing & Servicing	-	-	-	70	-	-	-	-	-	-
Travel & Subsistence	726	207	1,206	-	-	-	-	-	-	-
Fees - Other Services	-	408	145	-	-	-	-	-	-	-
Fees - Professional Services	-	-	-	-	-	-	-	383	-	-
Other Contractual Services	107	-	221	116	70	-	362	-	3,000	3,000
<i>Subtotal - Cont. Services - Illegal Gambling Enforcement Fund</i>	<i>1,011</i>	<i>615</i>	<i>1,812</i>	<i>966</i>	<i>70</i>	<i>-</i>	<i>362</i>	<i>403</i>	<i>3,000</i>	<i>3,000</i>
<b>Subtotal - Cont. Services - Illegal Gaming 03863</b>	<b>1,011</b>	<b>765</b>	<b>2,025</b>	<b>1,643</b>	<b>1,311</b>	<b>1,421</b>	<b>4,669</b>	<b>8,009</b>	<b>118,000</b>	<b>118,000</b>
<b>Total Contractual Services - Expanded Gaming Regulation Program</b>	<b>810,041</b>	<b>807,055</b>	<b>807,812</b>	<b>804,735</b>	<b>684,141</b>	<b>777,908</b>	<b>794,919</b>	<b>791,159</b>	<b>1,357,225</b>	<b>1,357,225</b>
<b>Prior Year - FY 2024</b>										
The majority of contractual expenditures for FY 2024 are for the regulation of the four lottery gaming facilities currently operating. Expenses for central administration primarily consist of rent and monument charge (\$227,000), and database fees related to background investigations (\$170,000).										
<b>Current Year - FY 2025</b>										
FY 2025 contractual services include expenditures for ongoing operations associated with the regulation of the Boot Hill Casino in Dodge City, the Hollywood Casino in Wyandotte county, the Kansas Star Casino near Mulvane, The Kansas Crossing Casino in Pittsburg, and regulatory costs related to the expansion of sports wagering. Travel and subsistence is for performing internal control audits at gaming facilities; voluntary exclusion program audits; electronic gaming equipment and security audits; background investigations of casino employees; agent and employee training; travel for the Commission; fees and professional services largely consisting of database access fees (i.e. KBI database) related to background checks for gaming facility employees. The majority of rental cost is Topeka office space and monument charge in the Eisenhower State Office Building. Costs from the Gaming Background Investigations fund are related to background checks of vendors who are providing goods and services to the gaming facilities.										
NOTE: The KRGC requests to continue the Hospitality Fund in the amount of \$1,500.										
<b>Enhancement - FY 2025</b>										
There are no contractual service enhancements for the Kansas Racing and Gaming Commission in the budget year.										

NARRATIVE INFORMATION -- DA 400	
DIVISION OF THE BUDGET STATE OF KANSAS	Kansas Racing and Gaming Commission
	553
	Expanded Gaming Regulation - 03800
<p><b>EXPANDED GAMING REGULATION PROGRAM</b></p> <p><u>Contractual Services (Continued)</u></p> <p><b><u>Budget Year - FY 2026</u></b>  The FY 2026 budget year reflects costs for the ongoing expanded gaming regulation of the four operational lottery gaming facilities and are consistent with the approved FY 2025 contractual services budget.  NOTE: The KRGK requests to continue the Hospitality Fund in the amount of \$1,500.</p> <p><b><u>Enhancement - FY 2026</u></b>  There are no contractual service enhancements for the Kansas Racing and Gaming Commission in the FY 2026 budget.</p>	

# NARRATIVE INFORMATION -- DA 400

DIVISION OF THE BUDGET  
STATE OF KANSAS

AGENCY NAME Kansas Racing and Gaming Commission  
AGENCY NUMBER 553  
PROGRAM TITLE AND CODE Expanded Gaming Regulation - 03800  
SUBPROGRAM TITLE AND CODE

## EXPANDED GAMING REGULATION PROGRAM

### Commodities

### Commodities by Sub-Program

	FY17	FY18	FY19	FY20	FY21	FY22	FY23	FY24	FY25	FY26
	Actual	Actual	Actual	Actual	Actual	Actual	Actual	Actual	Estimate	Estimate
<b>Gaming Regulation Sub-Program - 03861</b>										
<b>Expanded Lottery Act Reg Fund - 2535</b>										
Clothing	1,550	13	3,928	11,131	647	-	210	638	-	-
Food	16	55	32	514	-	59	72	341	-	-
Maintenance Materials, Supplies, Parts	3,395	8,215	3,891	7,694	553	7,784	3,915	948	4,100	4,100
Motor Vehicle Parts, Supplies	9,356	7,453	10,967	-	8,352	11,567	12,559	19,310	28,055	28,055
Professional & Scientific Supplies	421	4,061	793	3,535	3,908	2,883	1,101	2,068	25,860	25,860
Stationary & Office Supplies	48,872	10,933	21,312	13,828	9,986	10,892	16,437	30,317	84,555	84,555
Other Supplies, Materials, Parts	43,710	34,087	24,036	9,671	4,581	27,401	28,485	24,845	4,300	4,300
<b>Subtotal - Commodities - ELARF</b>	<b>107,320</b>	<b>64,817</b>	<b>64,959</b>	<b>46,373</b>	<b>28,027</b>	<b>60,586</b>	<b>62,779</b>	<b>78,467</b>	<b>146,870</b>	<b>146,870</b>
<b>Gaming Background Investigations Fund - 2682</b>										
Maintenance Materials, Supplies, Parts	-	-	-	-	-	-	-	-	-	-
Motor Vehicle Parts, Supplies	201	249	504	-	-	164	-	178	1,700	1,700
Professional & Scientific Supplies	-	-	-	139	-	-	-	-	-	-
Stationary & Office Supplies	-	-	-	-	-	-	-	-	-	-
Other Supplies and Materials	45	-	-	-	-	-	-	-	-	-
<b>Subtotal - Commodities - Gaming Background Investigations Fund</b>	<b>246</b>	<b>249</b>	<b>504</b>	<b>139</b>	<b>-</b>	<b>164</b>	<b>-</b>	<b>178</b>	<b>1,700</b>	<b>1,700</b>
<b>Illegal Gambling Enforcement Fund - 2734</b>										
<b>Subtotal - Commodities - Illegal Gambling Enforcement Fund</b>										
<b>Subtotal - Commodities - Gaming Regulation</b>	<b>107,566</b>	<b>65,066</b>	<b>65,463</b>	<b>46,512</b>	<b>28,027</b>	<b>60,750</b>	<b>62,779</b>	<b>78,645</b>	<b>148,570</b>	<b>148,570</b>
<b>Responsible Gaming Sub-Program - 03862</b>										
<b>Expanded Lottery Act Regulation Fund - 2535</b>										
<b>Subtotal - Commodities - ELARF</b>										
<b>Gaming Background Investigations Fund</b>										
<b>Subtotal - Commodities - Gaming Background Investigations Fund</b>										
<b>Illegal Gambling Enforcement Fund - 2734</b>										
<b>Subtotal - Commodities - Illegal Gambling Enforcement Fund</b>										
<b>Subtotal Commodities - Responsible Gambling 03862</b>										
<b>Illegal Gaming Sub-Program - 03863</b>										
<b>Expanded Lottery Act Regulation Fund - 2535</b>										
Food	-	-	-	-	-	-	179	-	-	-
Clothing	-	-	-	-	-	-	-	109	-	-
Maintenance Materials, Supplies, Parts	-	-	-	-	-	-	-	41	-	-
Motor Vehicle Parts, Supplies	-	639	371	297	613	350	1,349	2,342	1,200	1,200
Professional & Scientific Supplies	574	-	-	-	-	918	-	-	20,000	20,000
Stationary & Office Supplies	-	-	-	-	-	-	-	95	10,000	10,000
Other Supplies and Materials	-	136	-	207	-	326	-	333	-	-
<b>Subtotal - Commodities - ELARF</b>	<b>574</b>	<b>775</b>	<b>371</b>	<b>504</b>	<b>613</b>	<b>1,594</b>	<b>1,349</b>	<b>2,920</b>	<b>31,200</b>	<b>31,200</b>
<b>Illegal Gambling Enforcement Fund - 2734</b>										
Maintenance Materials, Supplies, Parts	-	-	-	-	-	-	-	-	-	-
Motor Vehicle Parts, Supplies	151	722	580	238	-	-	-	-	-	-
Professional & Scientific Supplies	574	-	-	-	-	-	-	-	-	-
Stationary & Office Supplies	-	-	65	240	-	-	91	49	-	-
Other Supplies and Materials	-	-	16	-	-	-	-	16	-	-
<b>Subtotal - Commodities - Illegal Gambling Enforcement Fund</b>	<b>725</b>	<b>722</b>	<b>661</b>	<b>478</b>	<b>-</b>	<b>-</b>	<b>91</b>	<b>65</b>	<b>-</b>	<b>-</b>
<b>Subtotal - Commodities - Illegal Gambling - 03863</b>	<b>1,299</b>	<b>1,497</b>	<b>1,032</b>	<b>982</b>	<b>613</b>	<b>1,594</b>	<b>1,440</b>	<b>2,985</b>	<b>31,200</b>	<b>31,200</b>
<b>Total Commodities - Expanded Gaming Regulation Program</b>	<b>108,865</b>	<b>66,563</b>	<b>66,495</b>	<b>47,494</b>	<b>28,640</b>	<b>62,344</b>	<b>64,219</b>	<b>81,630</b>	<b>179,770</b>	<b>179,770</b>

### Prior Year - FY 2024

The FY 2024 reflects costs associated with the regulation of expanded gaming for the Topeka office, the Boot Hill Casino in Ford county, Hollywood Casino in Wyandotte county, Kansas Star Casino in Sumner county, and Kansas Crossing Casino in Crawford county. Major categories of supplies include materials for repair of office equipment; supplies and materials for repair and maintenance of state vehicles (e.g. oil changes, tires) and fuel charges for state vehicles; professional and scientific supplies for law enforcement materials (e.g. hand guns, ammunition, EGM testing supplies), legal directories and security tags for gaming machines; office supplies for the Topeka, Boot Hill Casino, Kansas Star Casino, Hollywood Casino, and Kansas Crossing Casino KRGCC offices. Office supplies include security badge supplies for the printing and replacement of security badges for gaming facility employees.

### Current Year - FY 2025

The FY 2025 commodities budget reflects costs associated with the regulation of expanded gaming for the Topeka, the Boot Hill Casino, the Hollywood Casino, the Kansas Star Casino, and the Kansas Crossing Casino KRGCC offices and is unchanged from the FY 2025 approved budget.

### Enhancement - FY 2025

There are no commodity enhancements for the Kansas Racing and Gaming Commission in the budget year.

<b>NARRATIVE INFORMATION -- DA 400</b>		AGENCY NAME	Kansas Racing and Gaming Commission
		AGENCY NUMBER	553
DIVISION OF THE BUDGET		PROGRAM TITLE AND CODE	Expanded Gaming Regulation - 03800
STATE OF KANSAS		SUBPROGRAM TITLE AND CODE	
<p><b>EXPANDED GAMING REGULATION PROGRAM</b></p> <p><u><b>Commodities (Continued)</b></u></p> <p><u><b>Budget Year - FY 2026</b></u>  The FY 2026 commodities budget reflects costs associated with the regulation of expanded gaming for the Topeka, the Boot Hill Casino, the Hollywood Casino, the Kansas Star Casino, and the Kansas Crossing Casino KRGC offices and are consistent with the approved FY 2025 budget.</p> <p><u><b>Enhancement - FY 2026</b></u>  There are no commodity enhancements for the Kansas Racing and Gaming Commission in the budget year.</p>			

## NARRATIVE INFORMATION -- DA 400

DIVISION OF THE BUDGET  
STATE OF KANSAS

AGENCY NAME Kansas Racing and Gaming Commission  
AGENCY NUMBER 553  
PROGRAM TITLE AND CODE Expanded Gaming Regulation - 03800  
SUBPROGRAM TITLE AND CODE

### EXPANDED GAMING REGULATION PROGRAM

#### Capital Outlay

#### Capital Outlay by Sub-Program

	FY17 Actual	FY18 Actual	FY19 Actual	FY20 Actual	FY21 Actual	FY22 Actual	FY23 Actual	FY24 Actual	FY25 Estimate	FY25 Estimate
<b>Gaming Regulation Sub-Program - 03861</b>										
<b>Expanded Lottery Act Reg Fund - 2535</b>										
Passenger Cars	53,246	-	53,240	-	-	-	-	78,852	-	-
Equipment, Machinery, Furniture and Fixtures	33,086	5,101	3,428	-	3,679	10,487	5,500	6,553	5,500	5,500
Professional and Scientific Equipment	-	239	311	292	709	1,797	-	809	-	-
Books and Library Materials	83	-	-	-	-	150	-	1,992	-	-
Microcomputer Systems and Support Equipment	17,990	30,427	-	-	21,650	92,700	85,300	11,949	85,300	85,300
Information Processing Equipment	8,773	525	44,593	15,190	66,653	40,302	15,000	36,005	15,000	15,000
Computer Systems, Info Processing or Micro Software	8,318	18,501	-	60,796	38,722	36,179	49,500	33,684	49,500	49,500
Telecommunications/ Data Facilities	1,749	-	-	-	-	-	-	-	-	-
Building Improvements Non Cap	-	-	-	9,450	-	915	-	4,760	-	-
<i>Subtotal - Capital Outlay - ELARF</i>	<b>123,245</b>	<b>54,793</b>	<b>101,572</b>	<b>85,728</b>	<b>131,413</b>	<b>182,530</b>	<b>155,300</b>	<b>174,604</b>	<b>155,300</b>	<b>155,300</b>
<b>Gaming Background Investigations Fund - 2682</b>	-	-	-	-	-	-	-	-	-	-
<i>Subtotal - Capital Outlay - Gaming Background Investigations Fund</i>	-	-	-	-	-	-	-	-	-	-
<b>Subtotal - Capital Outlay - 03861</b>	<b>123,245</b>	<b>54,793</b>	<b>101,572</b>	<b>85,728</b>	<b>131,413</b>	<b>182,530</b>	<b>155,300</b>	<b>174,604</b>	<b>155,300</b>	<b>155,300</b>
<b>Responsible Gaming Sub-Program - 03862</b>										
<b>Expanded Lottery Act Reg Fund - 2535</b>	-	-	-	-	-	-	-	-	-	-
<i>Subtotal - Capital Outlay - ELARF</i>	-	-	-	-	-	-	-	-	-	-
<b>Gaming Background Investigations Fund - 2682</b>	-	-	-	-	-	-	-	-	-	-
<i>Subtotal - Capital Outlay - Gaming Background Investigations Fund</i>	-	-	-	-	-	-	-	-	-	-
<b>Subtotal Capital Outlay - 03862</b>	-	-	-	-	-	-	-	-	-	-
<b>Illegal Gaming Sub-Program - 03863</b>										
<b>Expanded Lottery Act Reg Fund - 2535</b>										
Professional and Scientific Equipment	-	-	-	-	-	-	-	856	5,000	5,000
Information Processing Equipment	42	-	76	259	-	-	-	1,489	-	-
Equipment, Machinery, Furniture and Fixtures	-	-	-	-	-	-	-	4,358	-	-
<i>Subtotal - Capital Outlay - ELARF</i>	<b>42</b>	-	<b>76</b>	<b>259</b>	-	-	-	<b>6,703</b>	<b>5,000</b>	<b>5,000</b>
<b>Illegal Gambling Enforcement Fund - 2734</b>	-	-	-	2,405	-	-	61,333	2,058	-	-
<i>Subtotal - Capital Outlay - Illegal Gambling Fund</i>	-	-	-	<b>2,405</b>	-	-	<b>61,333</b>	<b>2,058</b>	-	-
<b>Subtotal Capital Outlay - 03863</b>	<b>42</b>	-	<b>76</b>	<b>2,664</b>	-	-	<b>61,333</b>	<b>8,761</b>	<b>5,000</b>	<b>5,000</b>
<b>Total Capital Outlay - Expanded Gaming Regulation Program</b>	<b>123,287</b>	<b>54,793</b>	<b>101,648</b>	<b>88,392</b>	<b>131,413</b>	<b>182,530</b>	<b>216,633</b>	<b>183,365</b>	<b>160,300</b>	<b>160,300</b>

#### Prior Year - FY2024

The FY24 expenses for capital outlay include replacement of older computer workstations and related software, replacement of servers, replacement of firewalls, and updated security protocols. Capital outlay purchases also included the renewal of licensing software.

#### Current Year - FY 2025

The FY 2025 budget year reflects continued costs associated with the regulation of gaming for the Topeka office and the KRGC offices located at each of the four lottery gaming facilities. Expenditures include scheduled replacement computer workstations; scheduled server replacement; gaming test equipment; and other miscellaneous hardware and is consistent with the approved FY 2025 budget.

#### Enhancement - FY 2025

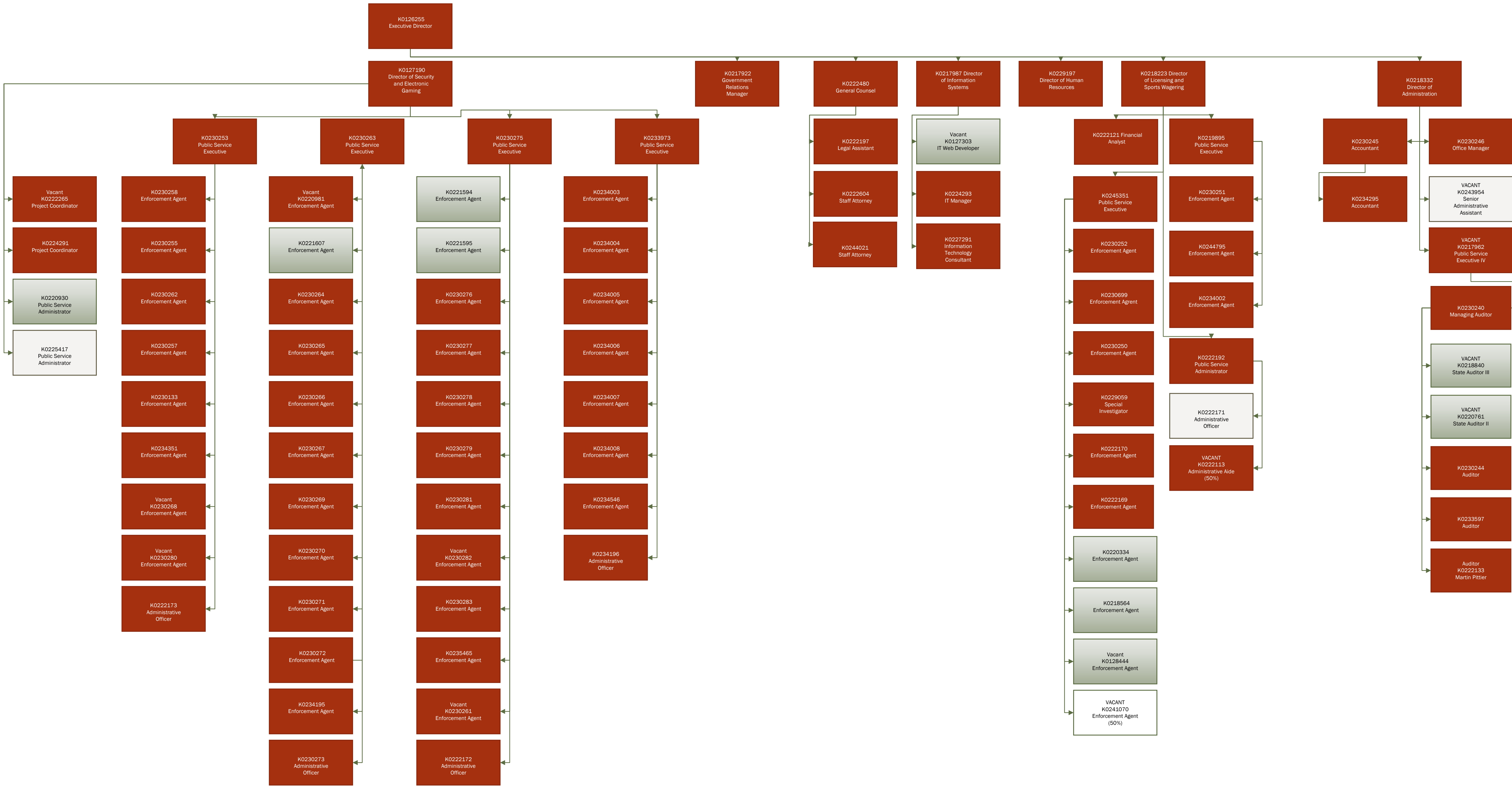
There are no capital outlay enhancements for the Kansas Racing and Gaming Commission in the budget year.

#### Budget Year - FY 2026

The FY 2026 budget year reflects continued costs associated with the regulation of gaming for the Topeka office and the KRGC offices located at each of the four lottery gaming facilities. Expenditures include scheduled replacement computer workstations; scheduled server replacement; gaming test equipment; and other miscellaneous hardware.

#### Enhancement - FY 2026

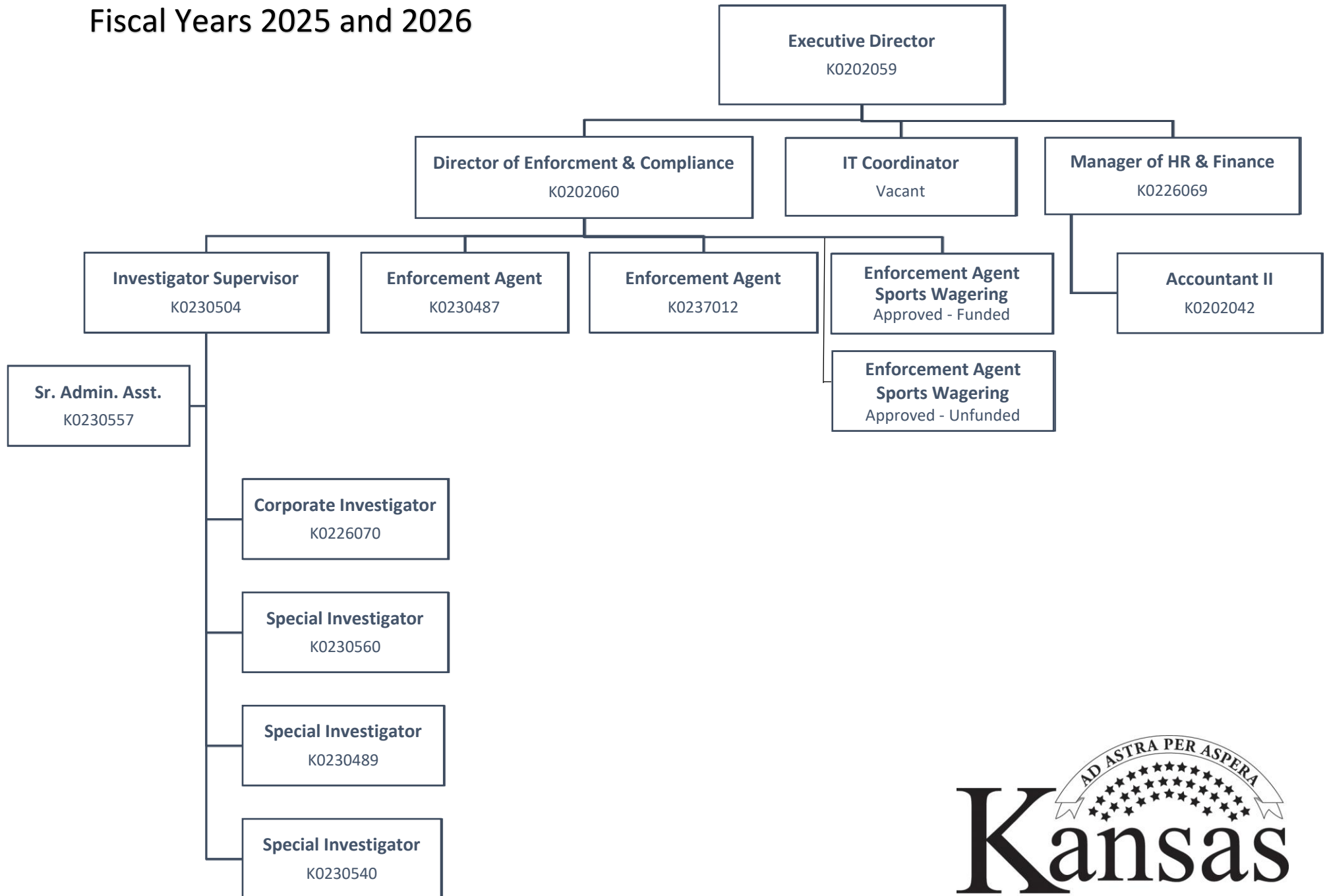
There are no capital outlay enhancements for the Kansas Racing and Gaming Commission in the budget year.



Legend



## Fiscal Years 2025 and 2026





**Kansas Racing and Gaming Commission**

Summary of Expenditures FY 2024 and FY 2026--- Expanded Gaming Program and Parimutuel Program

	<b>FY 2024 Actual</b>	<b>FY 2025 Approved</b>	<b>FY 2025 Revised</b>	<b>Change from FY 2025 Approved</b>	<b>% Change from Approved</b>	<b>FY 2025 Approved</b>	<b>FY 2026 Request</b>	<b>Change from</b>	<b>% Change from Approved</b>
Salaries and Wages		9,427,588	9,410,630	(16,958)	(0.18)	9,427,588	9,726,585	298,997	3.17
Less Shrinkage		(707,069)	(705,797)	1,272	0.18	(707,069)	(729,494)	(22,425)	(3.17)
<b>Net Salaries and Wages</b>	<b>7,076,810</b>	<b>8,720,519</b>	<b>8,704,833</b>	<b>(15,686)</b>	<b>(0.18)</b>	<b>8,720,519</b>	<b>8,997,091</b>	<b>276,572</b>	<b>3.17</b>
<b>Other Operating</b>									
Contractual Services	834,397	1,678,725	1,678,725	-	-	1,678,725	1,678,725	-	-
Commodities	84,799	215,370	215,370	-	-	215,370	215,370	-	-
Capital Outlay	183,365	210,300	310,300	100,000	0.48	210,300	230,300	20,000	0.10
<b>Subtotal Other Operating</b>	<b>1,102,561</b>	<b>2,104,395</b>	<b>2,204,395</b>	<b>100,000</b>	<b>4.75</b>	<b>2,104,395</b>	<b>2,124,395</b>	<b>20,000</b>	<b>0.95</b>
Interest	10,585	-	-	-	-	-	-	-	-
<b>Total Reportable Expense</b>	<b>8,189,956</b>	<b>10,824,914</b>	<b>10,909,228</b>	<b>84,314</b>	<b>0.78</b>	<b>10,824,914</b>	<b>11,121,486</b>	<b>296,572</b>	<b>2.74</b>
<b>Non-Reportable Expense:</b>									
Petty Cash Advance	-	-	-	-	-	-	-	-	-
<b>Grand Total Reportable and Non Reportable</b>	<b>8,189,956</b>	<b>10,824,914</b>	<b>10,909,228</b>	<b>84,314</b>	<b>0.78</b>	<b>10,824,914</b>	<b>11,121,486</b>	<b>296,572</b>	<b>2.74</b>

Fund Status Summary  
FY 2023 - FY 2026

	FY 2023 Ending Balance	FY 2024 Revenues Actual	FY 2024 Expend Actual	FY 2024 Ending Balance	FY 2025 Revenues Projection	FY 2025 Expend Projection	FY 2025 Ending Balance	FY 2026 Revenues Projection	FY 2026 Expend Projection	FY 2026 Ending Balance
Parimutuel Funds										
2516 - Kansas Horse Breeding Development Fund	51,913	-	-	51,913	-	-	51,913	-	-	51,913
2561 - Greyhound Promotion & Development Fund	-	-	-	-	-	-	-	-	-	-
2601 - Kansas Greyhound Breeding Development Fund	-	-	-	-	-	-	-	-	-	-
5131 - State Racing Fund	149,705	141,578	(171,356)	119,927	1,601,000	(1,295,104)	425,823	1,601,000	(1,429,415)	597,408
Subtotal	201,618	141,578	(171,356)	171,840	1,601,000	(1,295,104)	477,736	1,601,000	(1,429,415)	649,321
Gaming Funds										
2535 - Expanded Lottery Act Regulation (Gaming) Fund	4,140,263	8,986,998	(7,694,904)	5,432,357	6,675,000	(9,248,493)	2,858,864	9,550,000	(9,322,577)	3,086,286
2682 - Gaming Background Investigations Fund	266,065	323,294	(321,170)	268,189	400,000	(361,431)	306,758	375,000	(365,294)	316,465
2734- Illegal Gaming Enforcement Fund	74,482	255	(2,526)	72,211	5,000	(4,200)	73,011	5,000	(4,200)	73,811
2998- Gaming Machine Examination Fund	-	-	-	-	-	-	-	-	-	-
Subtotal	4,480,810	9,310,547	(8,018,600)	5,772,757	7,080,000	(9,614,124)	3,238,633	9,930,000	(9,692,071)	3,476,562
Total Funds	4,682,428	9,452,125	(8,189,956)	5,944,597	8,681,000	(10,909,228)	3,716,369	11,531,000	(11,121,486)	4,125,883

**Kansas Racing and Gaming Commission**

FTE Summary  
FY 2020 - FY 2026

	FY 2020 Actual	FY 2021 Approved	FY 2021 Revised	FY 2021 Actual	FY 2022 Approved	FY 2022 Revised	FY 2022 Actual	FY 2023 Approved	FY 2023 Revised	FY 2023 Actual	FY 2024 Approved	FY 2024 Revised	FY 2024 Actual	FY 2025 Approved	FY 2025 Revised	FY 2026 Requested
<b>Central Office</b>																
Executive	7.0	7.0	6.0	5.0	7.0	7.0	6.0	10.0	11.0	7.0	10.0	11.0	7.0	11.0	11.0	11.0
Administration and Audit	7.0	9.0	8.0	7.0	11.0	11.0	7.0	11.0	12.0	8.0	11.0	12.0	8.0	12.0	12.0	12.0
Animal Health	-	-	-	-	-	-	-	-	-	-	-	-	-	-	-	-
IT and Electronic Security	7.0	5.0	6.0	6.0	8.0	8.0	6.0	8.0	8.0	6.0	8.0	8.0	7.0	8.0	8.0	8.0
Racing	-	-	-	-	-	-	-	-	-	-	-	-	-	-	-	-
Security & Licensing <sup>1</sup>	11.0	15.0	14.0	12.5	15.5	14.5	12.5	17.5	18.5	16.0	17.5	18.5	17.0	18.5	18.5	18.5
<i>Subtotal - Central Office</i>	<i>32.0</i>	<i>36.0</i>	<i>34.0</i>	<i>30.5</i>	<i>41.5</i>	<i>40.5</i>	<i>31.5</i>	<i>46.5</i>	<i>49.5</i>	<i>37.0</i>	<i>46.5</i>	<i>49.5</i>	<i>39.0</i>	<i>49.5</i>	<i>49.5</i>	<i>49.5</i>
<b>Facilities</b>																
Wichita Race Facility	-	-	-	-	-	-	-	-	10.0	-	-	10.0	-	10.0	10.0	10.0
Woodlands (Kansas City)	-	-	-	-	-	-	-	-	-	-	-	-	-	-	-	-
Boot Hill (Dodge City)	7.0	8.5	8.5	9.0	9.0	10.0	8.0	10.0	10.0	10.0	10.0	10.0	8.0	10.0	10.0	10.0
Sumner Co. Gaming Facility	13.0	13.0	13.0	11.0	13.0	13.0	11.0	13.0	13.0	12.0	13.0	13.0	11.0	13.0	13.0	13.0
Hollywood (WY Co.)	11.0	13.0	13.0	11.0	13.0	13.0	13.0	13.0	13.0	11.0	13.0	13.0	12.0	13.0	13.0	13.0
Southeast Gaming Zone	9.0	-	-	9.0	10.0	10.0	9.0	10.0	10.0	9.0	10.0	10.0	9.0	10.0	10.0	10.0
<i>Subtotal - Facilities</i>	<i>40.0</i>	<i>34.5</i>	<i>34.5</i>	<i>40.0</i>	<i>45.0</i>	<i>46.0</i>	<i>41.0</i>	<i>46.0</i>	<i>56.0</i>	<i>42.0</i>	<i>46.0</i>	<i>56.0</i>	<i>40.0</i>	<i>56.0</i>	<i>56.0</i>	<i>56.0</i>
<b>Total</b>	<b>72.0</b>	<b>70.5</b>	<b>68.5</b>	<b>70.5</b>	<b>86.5</b>	<b>86.5</b>	<b>72.5</b>	<b>92.5</b>	<b>105.5</b>	<b>79.0</b>	<b>92.5</b>	<b>105.5</b>	<b>79.0</b>	<b>105.5</b>	<b>105.5</b>	<b>105.5</b>

Notes

1. Does not include Temporary, Unclassified positions (0.50 Administrative Aide, and 5 Commissioners

**Kansas Racing and Gaming Commission**  
 Budget Worksheet - Receipts  
 FY 2024 - FY 2026

**2535 - Expanded Lottery Act Regulation (Gaming) Fund**

	A	B	C	D	E	F	G	I	J
	FY 2024 Actual	FY 2024 Budget	Difference	FY 2025 Approved Budget	Revisions to FY 2025	Revised FY 2025 Budget	FY 2025 Base Budget	Changes from Approved FY 2025 to FY 2026	Submitted FY 2026 Budget
Receipts									
PMIB Loan Proceeds		-	-	-	-	-	-	-	-
LGFRB Applicant Reimbursement	-	-	-	-	-	-	-	-	-
SU Start-up Reimbursement	-	-	-	-	-	-	-	-	-
BHRC Start-up Reimb.	-	-	-	-	-	-	-	-	-
WY (Hollywood) Ops Reimbursment	2,321,425	1,986,000	335,425	2,490,000	(990,000)	1,500,000	2,490,000	(130,000)	2,360,000
SU (KC Star) Ops Reimbursment	2,591,385	2,044,000	547,385	2,260,000	(460,000)	1,800,000	2,260,000	180,000	2,440,000
BHRC Ops Reimbursment	1,642,267	1,331,000	311,267	1,440,000	(190,000)	1,250,000	1,440,000	345,000	1,785,000
Facility Mgr Background Deposits	-	-	-	-	-	-	-	-	-
SE (Southeast) Ops Reimbursement	1,514,800	1,364,000	150,800	1,560,000	(310,000)	1,250,000	1,560,000	280,000	1,840,000
Administrative Costs Allocation Parimutuel	510,837	-	510,837	-	500,000	500,000	-	750,000	750,000
Vendor Background Fees	-	-	-	-	-	-	-	-	-
Miscellaneous Revenue	31,284	-	31,284	-	-	-	-	-	-
Transfer In	375,000	375,000	-	375,000	-	375,000	375,000	-	375,000
Transfer Out	-	-	-	-	-	-	-	-	-
Total Receipts	8,986,998	7,100,000	1,886,998	8,125,000	(1,450,000)	6,675,000	8,125,000	1,425,000	9,550,000
Total Expenses	7,694,904	8,805,314	(1,688,013)	9,098,893	149,600	9,248,493	9,098,893	223,684	9,322,577

**Kansas Racing and Gaming Commission**

Budget Worksheet - Expenditures

FY 2024 - FY 2026

**2535 - Expanded Lottery Act Regulation (Gaming) Fund**

		A	B	C	D	E	F	G	I	J
		FY 2024 Actual	FY 2024 Budget	Difference	FY 2025 Approved Budget	Revisions to FY 2025	Revised FY 2025 Budget	FY 2025 Base Budget	Changes from Revised FY 2025 to FY 2026	Submitted FY 2026 Budget
Salaries	510	6,658,767	7,726,772	(1,068,005)	8,046,214	161,730	8,207,944	8,046,214	188,098	8,288,035
Shrinkage	519	-	(577,603)	577,603	(603,466)	(12,130)	(615,596)	(603,466)	(18,137)	(621,603)
Contractual Services										
Communication	520	62,796	105,200	(42,404)	105,200	-	105,200	105,200	-	105,200
Freight & express	521	4,030	1,300	2,730	1,300	-	1,300	1,300	-	1,300
Printing & advertising	522	3,368	1,450	1,918	1,450	-	1,450	1,450	-	1,450
Rents	523	241,639	260,650	(19,011)	260,650	-	260,650	260,650	-	260,650
Repairing & servicing	524	25,043	55,708	(30,665)	55,708	-	55,708	55,708	-	55,708
Travel & subsistence	525	93,524	176,634	(83,110)	176,634	-	176,634	176,634	-	176,634
Fees-other services	526	317,402	366,940	(49,538)	366,940	-	366,940	366,940	-	366,940
Fees-professional services	527	18,504	332,050	(313,546)	332,050	-	332,050	332,050	-	332,050
Other contractual services	529	7,137	19,043	(11,906)	19,043	-	19,043	19,043	-	19,043
Total contractual services		773,443	1,318,975	(545,532)	1,318,975	-	1,318,975	1,318,975	-	1,318,975
Commodities										
Clothing	530	638	-	638	-	-	-	-	-	-
Food	532	450	-	450	-	-	-	-	-	-
Maintenance materials	534	989	4,100	(3,111)	4,100	-	4,100	4,100	-	4,100
Vehicle parts, supplies	535	21,652	28,055	(6,403)	28,055	-	28,055	28,055	-	28,055
Prof. & scientific supplies	536	2,068	45,860	(43,792)	45,860	-	45,860	45,860	-	45,860
Office supplies	537	30,412	94,055	(63,643)	94,055	-	94,055	94,055	-	94,055
Other supplies & materials	539	25,178	4,800	20,378	4,800	-	4,800	4,800	-	4,800
Total commodities		81,387	176,870	(95,483)	176,870	-	176,870	176,870	-	176,870
Capital outlay	54	181,307	160,300	21,007	160,300	-	160,300	160,300	-	160,300
Other										
Voluntary Retirement		-	-	-	-	-	-	-	-	-
Interest		-	-	-	-	-	-	-	-	-
Principal		-	-	-	-	-	-	-	-	-
Subtotal		-	-	-	-	-	-	-	-	-
Total Expenditures		7,694,904	8,805,314	(1,110,410)	9,098,893	149,600	9,248,493	9,098,893	169,961	9,322,577

**Kansas Racing and Gaming Commission**  
 Budget Worksheet - Receipts  
 FY 2024 - FY 2026

**2682 - Gaming Background Investigations Fund**

	A	B	C	D	E	F	G	I	J
	FY 2024 Actual	FY 2024 Budget	Difference	FY 2025 Approved Budget	Revisions to FY 2025	Revised FY 2025 Budget	FY 2025 Base Budget	Changes from Approved FY 2025 to FY 2026	Submitted FY 2026 Budget
Receipts									
Vendor Background Deposits	323,294	400,000	(76,706)	375,000	25,000	400,000	375,000	-	375,000
Miscellaneous revenues	-	-	-	-	-	-	-	-	-
State General Fund	-	-	-	-	-	-	-	-	-
Transfer Out	-	-	-	-	-	-	-	-	-
Total Receipts	323,294	400,000	(76,706)	375,000	25,000	400,000	375,000	-	375,000
							-		
Total Expenses	321,170	357,494	(62,310)	357,440	3,990	361,431	357,440	7,853	365,294

**Kansas Racing and Gaming Commission**  
Budget Worksheet - Expenditures  
FY 2024 - FY 2026

**2682 - Gaming Background Investigations Fund**

		A	B	C	D	E	F	G	I	J
		FY 2024 Actual	FY 2024 Budget	Difference	FY 2025 Approved Budget	Revisions to FY 2025	Revised FY 2025 Budget	FY 2025 Base Budget	Changes from Approved FY 2025 to FY 2026	Submitted FY 2026 Budget
Salaries	51	303,628	346,476	(42,848)	346,476	4,314	350,790	346,476	8,490	354,966
Shrinkage	519		(25,986)	25,986	(25,986)	(324)	(26,309)	(25,986)	(637)	(26,622)
Contractual Services										
Communication	520	-	-	-	-	-	-	-	-	-
Freight & express	521	-	-	-	-	-	-	-	-	-
Printing & advertising	522	-	-	-	-	-	-	-	-	-
Rents	523	-	-	-	-	-	-	-	-	-
Repairing & servicing	524	-	-	-	-	-	-	-	-	-
Travel & subsistence	525	15,975	35,250	(19,275)	35,250	-	35,250	35,250	-	35,250
Fees-other services	526	1,255	-	1,255	-	-	-	-	-	-
Fees-professional services	527	134	-	134	-	-	-	-	-	-
Other contractual services	529	-	-	-	-	-	-	-	-	-
Total contractual services		17,364	35,250	(17,886)	35,250	-	35,250	35,250	-	35,250
Commodities		-								
Clothing	530	-	-	-	-	-	-	-	-	-
Food	532	-	-	-	-	-	-	-	-	-
Maintenance materials	534	-	-	-	-	-	-	-	-	-
Vehicle parts, supplies	535	178	1,700	(1,522)	1,700	-	1,700	1,700	-	1,700
Prof. & scientific supplies	536	-	-	-	-	-	-	-	-	-
Office supplies	537	-	-	-	-	-	-	-	-	-
Other supplies & materials	539	-	-	-	-	-	-	-	-	-
Total commodities		178	1,700	(1,522)	1,700	-	1,700	1,700	-	1,700
Capital outlay	54	-	54	(54)	-	-	-	-	-	-
Total Expenditures		321,170	357,494	(62,310)	357,440	3,990	361,431	357,440	7,853	365,294

**Kansas Racing and Gaming Commission**  
 Budget Worksheet - Receipts  
 FY 2024 - FY 2026

**2734- Illegal Gaming Enforcement Fund**

	A	B	C	D	E	F	G	I	J
	FY 2024 Actual	FY 2024 Budget	Difference	FY 2025 Approved Budget	Revisions to FY 2025	Revised FY 2025 Budget	FY 2025 Base Budget	Changes from Approved FY 2025 to FY 2026	Submitted FY 2026 Budget
Receipts									
Transfer from ELARF									
Seized Assets	255	5,000	(4,745)	5,000	-	5,000	5,000	-	5,000
Miscellaneous Revenues	-	-	-	-	-	-	-	-	-
Fines	-	-	-	-	-	-	-	-	-
State General Fund	-	-	-	-	-	-	-	-	-
Transfer Out	-	-	-	-	-	-	-	-	-
Total Receipts	255	5,000	(4,745)	5,000	-	5,000	5,000	-	5,000



**Kansas Racing and Gaming Commission**  
 Budget Worksheet - Expenditures  
 FY 2024 - FY 2026

**2734- Illegal Gaming Enforcement Program**

		A	B	C	D	E	F	G	I	J
		FY 2024 Actual	FY 2024 Budget	Difference	FY 2025 Approved Budget	Revisions to FY 2025	Revised FY 2025 Budget	FY 2025 Base Budget	Changes from Approved FY 2025 to FY 2026	Submitted FY 2026 Budget
Salaries	51	-		-	-	-	-	-	-	-
Shrinkage	519	-	-	-	-	-	-	-	-	-
Contractual Services										
Communication	520	-	-	-	-	-	-	-	-	-
Freight & express	521	20	-	20	-	-	-	-	-	-
Printing & advertising	522	-	-	-	-	-	-	-	-	-
Rents	523	-	-	-	-	-	-	-	-	-
Repairing & servicing	524	-	-	-	-	-	-	-	-	-
Travel & subsistence	525	-	-	-	-	-	-	-	-	-
Fees-other services	526	-	-	-	-	-	-	-	-	-
Fees-professional services	527	-	-	-	-	-	-	-	-	-
Other contractual services	529	383	3,000	(2,617)	3,000	-	3,000	3,000	-	3,000
Petty Cash Fund Advance		-	-	-	-	-	-	-	-	-
Total contractual services		403	3,000	(2,597)	3,000	-	3,000	3,000	-	3,000
Commodities										
Clothing	530	-	-	-	-	-	-	-	-	-
Food	532	-	-	-	-	-	-	-	-	-
Maintenance materials	534	-	-	-	-	-	-	-	-	-
Vehicle parts, supplies	535	-	1,200	(1,200)	1,200	-	1,200	1,200	-	1,200
Prof. & scientific supplies	536	-	-	-	-	-	-	-	-	-
Office supplies	537	49	-	49	-	-	-	-	-	-
Other supplies & materials	539	16	-	16	-	-	-	-	-	-
Total commodities		65	1,200	(1,135)	1,200	-	1,200	1,200	-	1,200
Capital outlay	54	2,058		2,058	-	-		-	-	-
Total Expenditures		2,526	4,200	(1,674)	4,200	-	4,200	4,200	-	4,200

**Kansas Racing and Gaming Commission**  
 Budget Worksheet - Receipts  
 FY 2024 - FY 2026

**5131 - State Racing Fund**

	A	B	C	D	E	F	G	I	J
	FY 2024 Actual	FY 2024 Budget	Difference	FY 2025 Approved Budget	Revisions to FY 2025	Revised FY 2025 Budget	FY 2025 Base Budget	Changes from Approved FY 2025 to FY 2026	Submitted FY 2026 Budget
Receipts									
Parimutuel tax - live	-	-	-	-	-	-	-	-	-
Parimutuel tax - simulcast	-	-	-	-	-	-	-	-	-
Admissions tax	-	-	-	-	-	-	-	-	-
Fees (License, Registration, etc)	141,578	-	141,578	1,600,000	-	1,600,000	1,600,000	-	1,600,000
Fines	-	1,000	(1,000)	1,000	-	1,000	1,000	-	1,000
Unclaimed winnings	-	-	-	-	-	-	-	-	-
Miscellaneous receipts	-	-	-	-	-	-	-	-	-
Operating Transfer out	-	-	-	-	-	-	-	-	-
Transfer In (Racing Funds)	-	-	-	-	-	-	-	-	-
<b>Total Receipts</b>	<b>141,578</b>	<b>1,000</b>	<b>140,578</b>	<b>1,601,000</b>	<b>-</b>	<b>1,601,000</b>	<b>1,601,000</b>	<b>-</b>	<b>1,601,000</b>

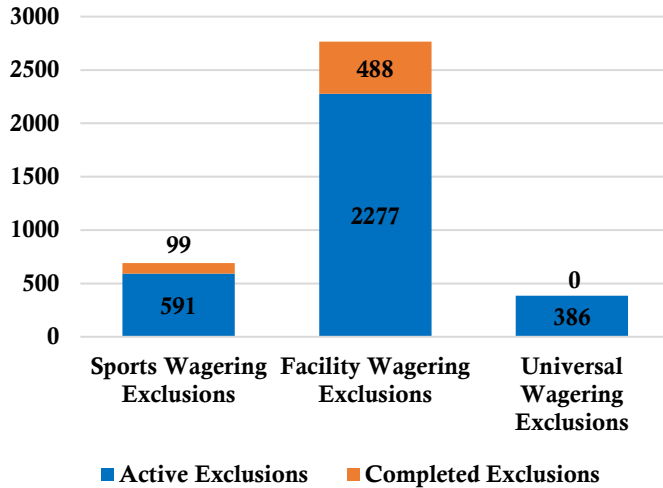
**Kansas Racing and Gaming Commission**  
Budget Worksheet - Expenditures  
FY 2024 - FY 2026

**5131 - State Racing Fund**

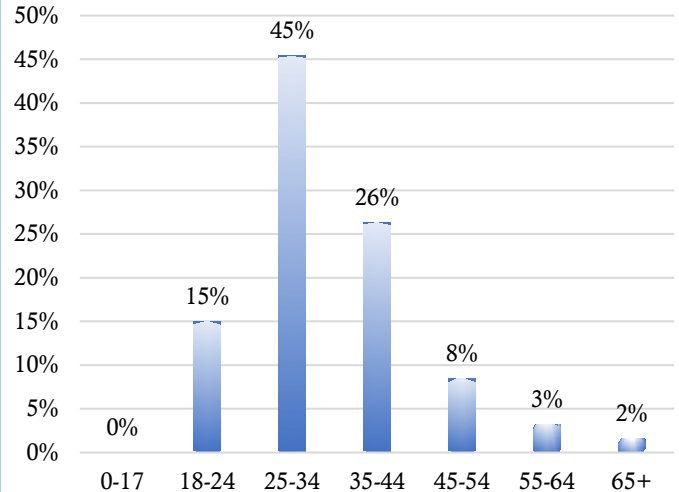
		A	B	C	D	E	F	G	I	J
		FY 2024 Actual	FY 2024 Budget	Difference	FY 2025 Approved Budget	Revisions to FY 2025	Revised FY 2025 Budget	FY 2025 Base Budget	Changes from Approved FY 2025 to FY 2026	Submitted FY 2026 Budget
Salaries	510	114,415	3,249	111,166	1,034,898	(183,002)	851,896	1,034,898	48,686	1,083,584
Shrinkage	519	-	(244)	244	(77,617)	13,725	(63,892)	(77,617)	(3,651)	(81,269)
Contractual Services										
Communication	520	-	-	-	10,000	-	10,000	10,000	-	10,000
Freight & express	521	-	-	-	-	-	-	-	-	-
Printing & advertising	522	-	-	-	-	-	-	-	-	-
Rents	523	24,740	2,000	22,740	20,500	-	20,500	20,500	-	20,500
Repairing & servicing	524	-	-	-	-	-	-	-	-	-
Travel & subsistence	525	18,399	-	18,399	40,000	-	40,000	40,000	-	40,000
Fees-other services	526	48	-	48	150,000	-	150,000	150,000	-	150,000
Fees-professional services	527	-	-	-	101,000	-	101,000	101,000	-	101,000
Other contractual services	529	-	-	-	-	-	-	-	-	-
Total contractual services		43,187	2,000	41,187	321,500	-	321,500	321,500	-	321,500
Commodities										
Clothing	530	-	-	-	-	-	-	-	-	-
Food	531	2,854	-	2,854	-	-	-	-	-	-
Maintenance materials	534	-	-	-	200	-	200	200	-	200
Vehicle parts, supplies	535	315	-	315	8,000	-	8,000	8,000	-	8,000
Prof. & scientific supplies	536	-	-	-	14,000	-	14,000	14,000	-	14,000
Office supplies	537	-	-	-	12,000	-	12,000	12,000	-	12,000
Other supplies & materials	539	-	-	-	1,400	-	1,400	1,400	-	1,400
Total commodities		3,169	-	3,169	35,600	-	35,600	35,600	-	35,600
Capital outlay	54	-	-	-	50,000	100,000	150,000	50,000	20,000	70,000
Settlement	55	-								
Interest Payment	59	10,585								
Total Expenditures		171,356	5,005	155,766	1,364,381	(69,277)	1,295,104	1,364,381	65,035	1,429,415

## Voluntary Exclusion Report January 2010 – August 2024

### Total Number of Exclusions

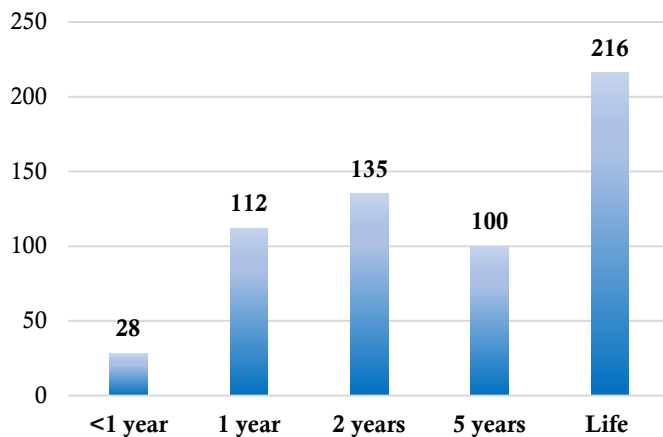


### Age of SWEP

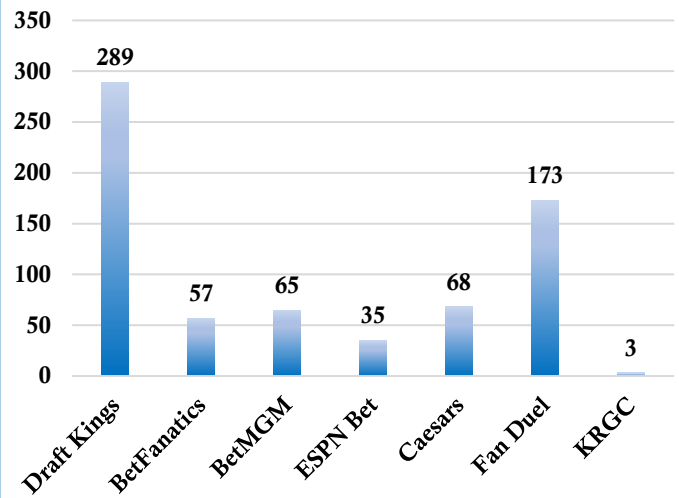


### Active Sports Wagering Exclusion Durations

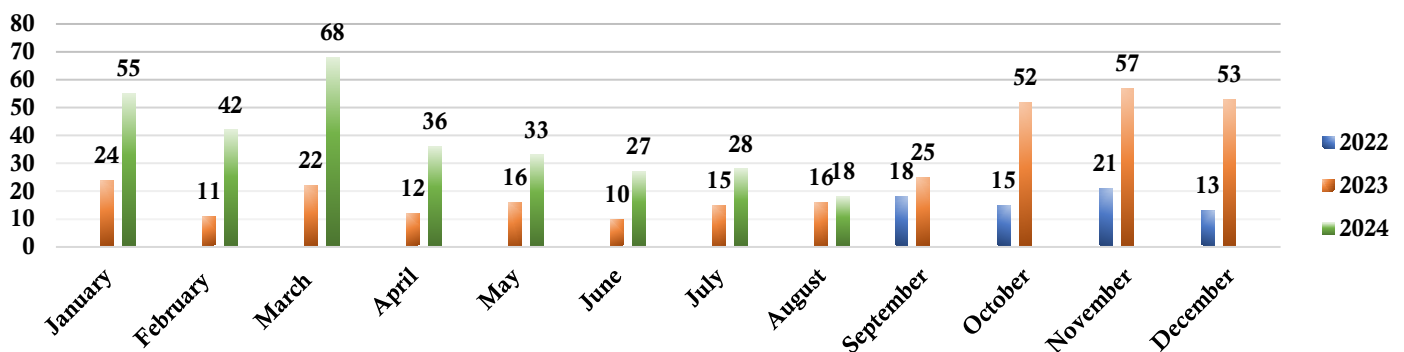
(Figures do not include completed exclusions)



### SWE Enrollment by Platform\*



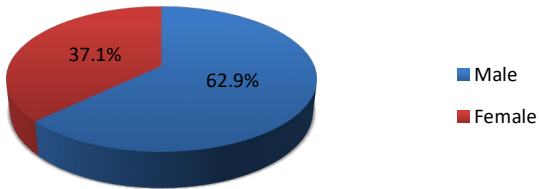
### SPORTS WAGERING EXCLUSION ENROLLMENT BY MONTH



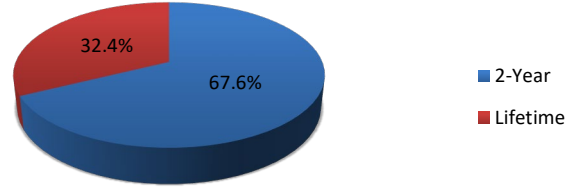
## Voluntary Exclusion Program January 2010 –August 2024

Voluntary Exclusions = 3,152  
Violation Incidents = 454 (405 individuals)

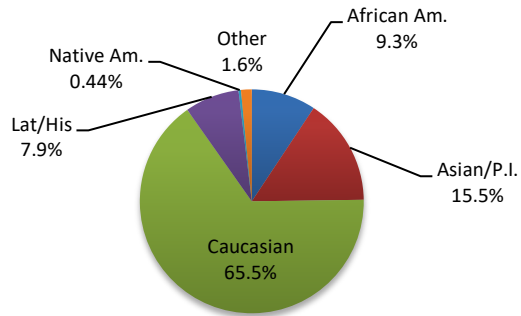
**VEP Gender**



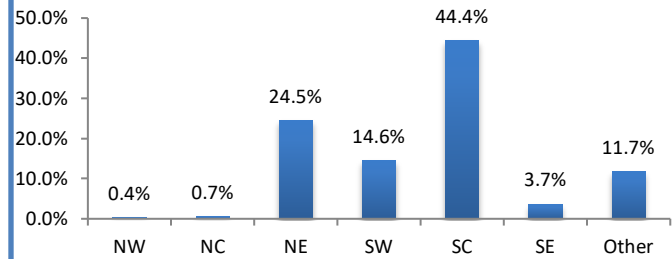
**Exclusion Period**



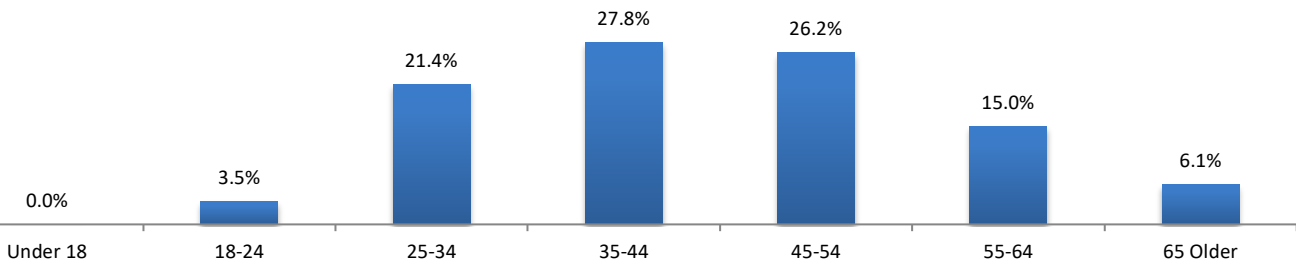
**Ethnicity**



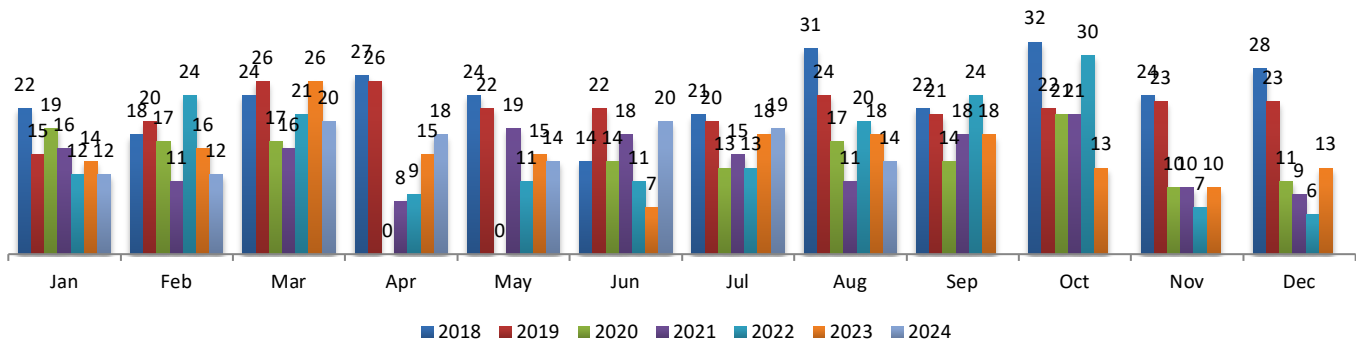
**Lottery Region**



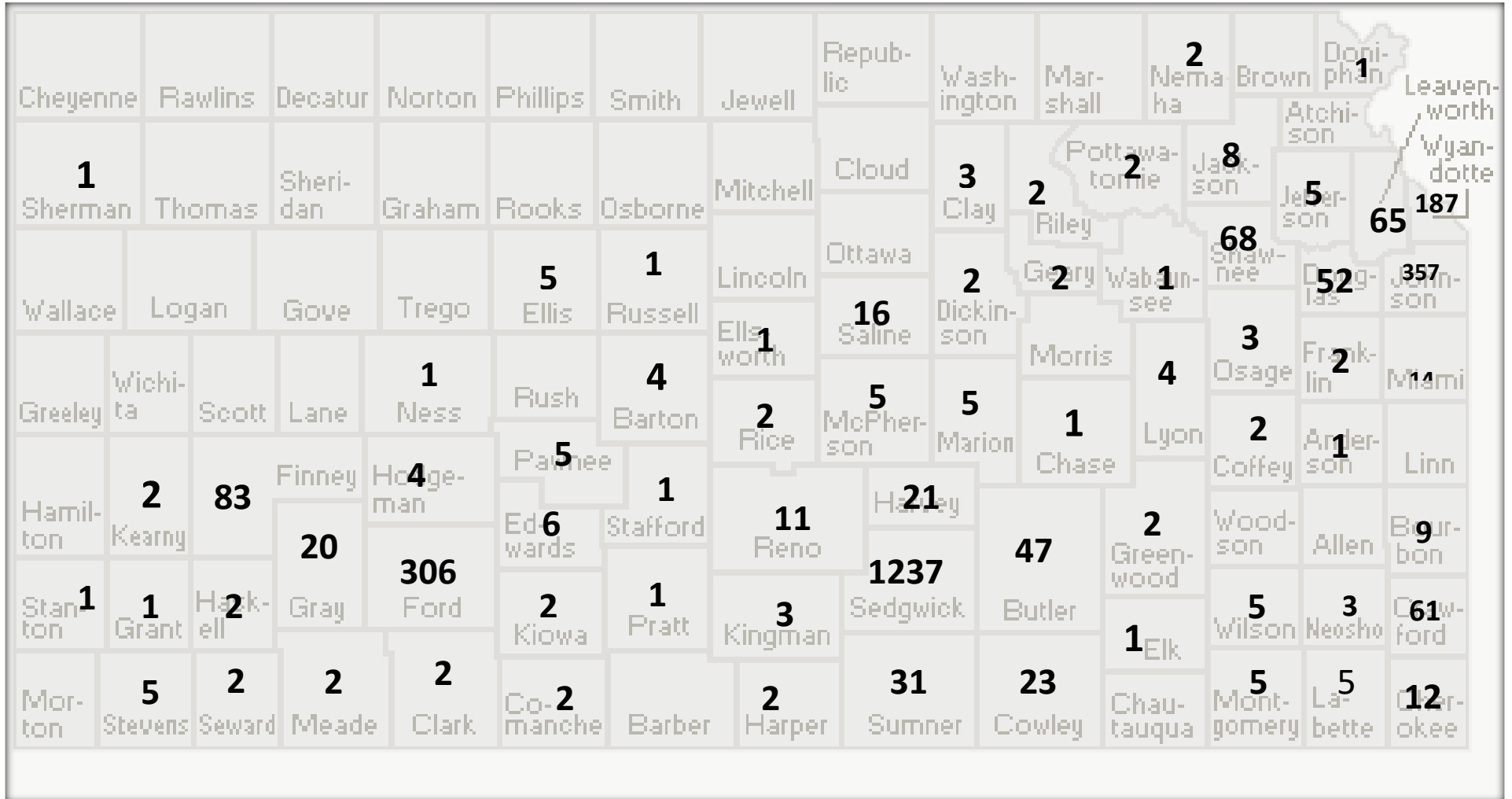
**Age of VEP**



**VEP Enrollments by Year**



## KRGC Voluntarily Excluded Persons December 2009 – August 2024



Colorado – 6  
Iowa – 5  
Kansas-2,772  
Missouri -261  
Nebraska – 7  
Oklahoma – 57  
Other-44

**TOTAL VEPs = 3,152**

All Departments		Cash Fund Balances as of August 31, 2024											
DeptID	All	ELARF				Backgrounds				Illegal Gambling			
All Funds		Beg. Balance	5,548,212			Beg. Balance	268,188			Beg. Balance	72,212		
		Revenue	1,429,241			Revenue	50,842			Revenue	5,425		
		Expenses	1,569,078			Expenses	67,184			Expenses	634		
		End Balance	5,408,375			End Balance	251,846			End Balance	77,003		
Fund													
BudgetUnit													
		Grand Total											
		All Funding Sources											
		YTD FY2024 ACTUALS	YTD FY2025 ACTUALS	\$ VARIANCE	% VARIANCE	August FY2024 ACTUALS	August FY2025 ACTUALS	\$ VARIANCE	% VARIANCE	YTD FY2025 BUDGET	YTD FY2025 ACTUALS	\$ VARIANCE	% VARIANCE
51000	Payroll	1,068,018	1,439,702	371,684	35%	527,804	825,532	297,728	56%	1,450,122	1,439,702	-10,420	-1%
10	Shrinkage	0	0	0	0%	0	0	0	0%	-108,759	0	108,759	-100%
Net Salaries and Wages		1,068,018	1,439,702	371,684	35%	527,804	825,532	297,728	56%	1,341,363	1,439,702	98,340	7%
52000	Communication	9,955	4,663	-5,291	-53%	5,033	2,227	-2,805	-56%	18,367	4,663	-13,703	-75%
52100	Freight and Express	282	995	713	253%	195	715	519	266%	217	995	778	359%
52200	Printing and Advertising	18	634	617	3502%	18	193	176	997%	242	634	393	162%
52300	Rents	78,705	59,647	-19,058	-24%	53,953	212	-53,742	-100%	45,192	59,647	14,455	32%
52400	Repair/Servicing/Mainten	5,882	17,064	11,182	190%	695	16,574	15,879	2285%	9,285	17,064	7,780	84%
52510	InState Travel and Subsistence	22,788	7,703	-15,085	-66%	8,015	5,200	-2,815	-35%	38,647	7,703	-30,945	-80%
52520	Out of State Travel and Subsistence	5,318	0	-5,318	-100%	5,318	0	-5,318	-100%	0	0	0	0%
52530	International Travel and Subsistence	0	0	0	0%	0	0	0	0%	0	0	0	0%
52600	Fees-Other Services	81,122	109,623	28,501	35%	54,646	47,552	-7,094	-13%	73,657	109,623	35,967	49%
52700	Fee-Professional Services	685	685	0	0%	360	325	-35	-10%	63,758	685	-63,073	-99%
52900	Other Contractual Services	3,782	75	-3,707	-98%	3,707	0	-3,707	-100%	3,674	75	-3,599	-98%
Subtotal Contractual Services		208,537	201,090	-7,448	-4%	131,940	72,998	-58,942	-45%	253,038	201,090	-51,948	-21%
53200	Food for Human Consumption	2,854	14	-2,840	-99%	0	0	0	0%	0	14	14	0%
53400	Maint Constr Material Supply	5	717	712	14248%	0	44	44	0%	717	717	1	0%
53500	Vehicle Part Supply Accessory	1,069	2,162	1,093	102%	747	1,195	449	60%	5,159	2,162	-2,997	-58%
53600	Pro Science Supply Material	1,269	38	-1,232	-97%	1,199	38	-1,161	-97%	9,977	38	-9,939	-100%
53700	Office and Data Supplies	7,043	1,724	-5,320	-76%	4,013	280	-3,733	-93%	17,676	1,724	-15,952	-90%
53900	Other Supplies and Materials	712	7,002	6,289	883%	351	796	445	127%	1,033	7,002	5,968	578%
Subtotal Commodities		12,953	11,656	-1,297	-10%	6,309	2,352	-3,956	-63%	34,562	11,656	-22,905	-66%
54000	TOTAL Capital Outlay	35,393	7,055	-28,338	-80%	28,701	6,217	-22,485	-78%	51,717	7,055	-44,662	-86%
Grand Total		1,324,901	1,659,503	334,602	25%	694,754	907,099	212,345	31%	1,680,679	1,659,503	-21,175	-1%

\*This report has not been audited by the State of Kansas and is intended solely for the use of the Executive Director of the Kansas Racing and Gaming Commission.



September 2024 - August 2025

Kansas Racing and Gaming Commission Planner

Sep 2024						
S	M	T	W	T	F	S
1	2	3	4	5	6	7
8	9	10	11	12	13	14
15	16	17	18	19	20	21
22	23	24	25	26	27	28
29	30					

SEPTEMBER  
*13 Commission Meeting*

OCTOBER  
*18 Commission Meeting*

NOVEMBER

Mar 2025						
S	M	T	W	T	F	S
						1
2	3	4	5	6	7	8
9	10	11	12	13	14	15
16	17	18	19	20	21	22
23	24	25	26	27	28	29
30	31					

Oct 2024						
S	M	T	W	T	F	S
		1	2	3	4	5
6	7	8	9	10	11	12
13	14	15	16	17	18	19
20	21	22	23	24	25	26
27	28	29	30	31		

*15 Commission Meeting*

DECEMBER  
*13 Commission Meeting*

JANUARY  
*17 Commission Meeting*

FEBRUARY

Apr 2025						
S	M	T	W	T	F	S
		1	2	3	4	5
6	7	8	9	10	11	12
13	14	15	16	17	18	19
20	21	22	23	24	25	26
27	28	29	30			

Nov 2024						
S	M	T	W	T	F	S
					1	2
3	4	5	6	7	8	9
10	11	12	13	14	15	16
17	18	19	20	21	22	23
24	25	26	27	28	29	30

*14 Commission Meeting*

MARCH  
*14 Commission Meeting*

APRIL  
*18 Commission Meeting*

May 2025						
S	M	T	W	T	F	S
				1	2	3
4	5	6	7	8	9	10
11	12	13	14	15	16	17
18	19	20	21	22	23	24
25	26	27	28	29	30	31

Dec 2024						
S	M	T	W	T	F	S
1	2	3	4	5	6	7
8	9	10	11	12	13	14
15	16	17	18	19	20	21
22	23	24	25	26	27	28
29	30	31				

MAY  
*16 Commission Meeting*

JUNE  
*13 Commission Meeting*

JULY  
*18 Commission Meeting*

Jun 2025						
S	M	T	W	T	F	S
1	2	3	4	5	6	7
8	9	10	11	12	13	14
15	16	17	18	19	20	21
22	23	24	25	26	27	28
29	30					

Jan 2025						
S	M	T	W	T	F	S
		1	2	3	4	
5	6	7	8	9	10	11
12	13	14	15	16	17	18
19	20	21	22	23	24	25
26	27	28	29	30	31	

AUGUST  
*15 Commission Meeting*

Jul 2025						
S	M	T	W	T	F	S
		1	2	3	4	5
6	7	8	9	10	11	12
13	14	15	16	17	18	19
20	21	22	23	24	25	26
27	28	29	30	31		

Feb 2025						
S	M	T	W	T	F	S
						1
2	3	4	5	6	7	8
9	10	11	12	13	14	15
16	17	18	19	20	21	22
23	24	25	26	27	28	

Aug 2025						
S	M	T	W	T	F	S
					1	2
3	4	5	6	7	8	9
10	11	12	13	14	15	16
17	18	19	20	21	22	23
24	25	26	27	28	29	30
31						